

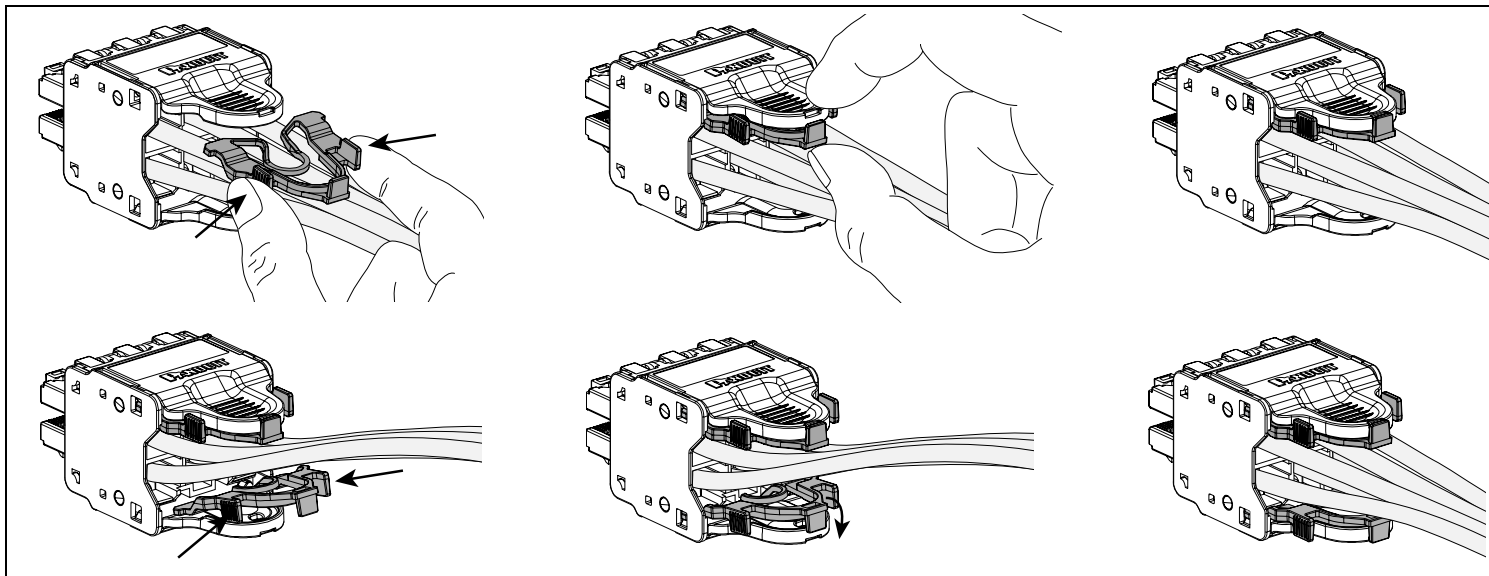


# QUICKNET Plug Pack Lock-in Device

Part Number: QPPLD6-X, QPPLD8-X

© Panduit Corp. 2008

## INSTALLATION INSTRUCTIONS PN463A



For Instructions in Local Languages  
and Technical Support:

[www.panduit.com/resources/install\\_maintain.asp](http://www.panduit.com/resources/install_maintain.asp)



[www.panduit.com](http://www.panduit.com)

E-mail:  
[cs@panduit.com](mailto:cs@panduit.com)

Fax:  
(708) 444-6993