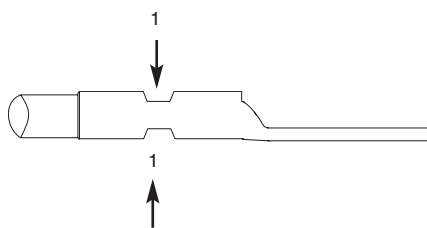
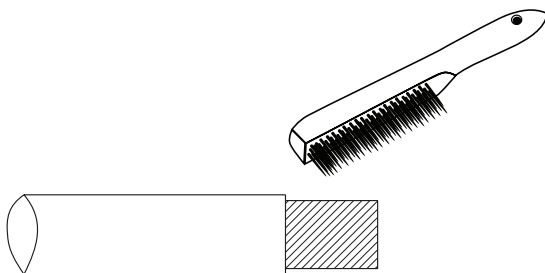
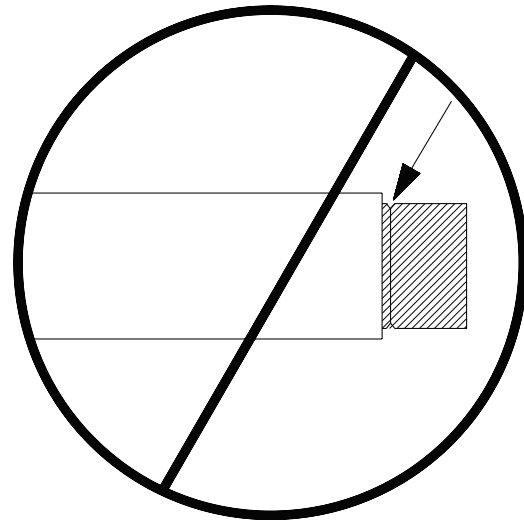
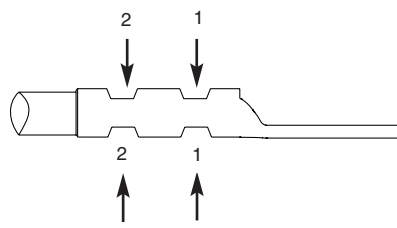


INSTALLATION INSTRUCTIONS T-PMPI-276-PC

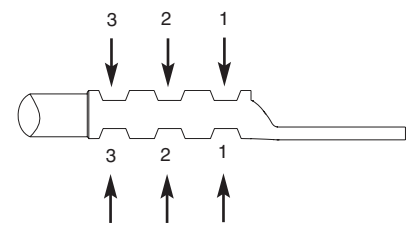
© PANDUIT Corp. 2009



(1)



(2)



(3)

INSTALLATION INSTRUCTIONS T-PMPI-276-PC

Tool Chart for Compression Connectors Types LCMA, LCMD and SCMS with Copper Cable

| PANDUIT Part Number | Wire Type/ Size | L Wire Strip Length (mm) | Current Rating | PANDUIT Tool Part Number | | | | | | CT-920, CT-920CH, CT-930, CT-930CH, CT-930LPCH***, CT-2920, CT-2930, CT-2931, CT2931/E**** CT-940CH*, CT-2940* |
|--|--------------------------------|-----------------------------------|-------------------|--|--------------------|--------------------------|---------|-------------------------------|--|--|
| | | | | Die Color, Index Number (Crimps Per Connector) | | | | | | |
| | | | | CT-100 | CT-200, CT-1570 | CT-600 | CT-1701 | CT-2001, CT-2002 | | |
| LCMA6**** LCMD6**** | Class 2R 4-6mm ² | 11.0 11.0 | 30A | 22-10 (1) | 12-10 (1) | CT-570CH 12-10 (1) | P10 (1) | — | — | |
| LCMA10 LCMD10 SCMS10**** | Class 2R 10mm ² | 12.5 12.5 16.5 | — — 50A | — | — | — | — | CD-2001-8 Red P21 (1) | CD-920-8 Red P21 (1) | |
| LCMA16**** LCMD16**** SCMS16**** | Class 2R 16mm ² | 16.0 16.0 19.0 | 65A | — | — | — | — | CD-2001-6 Blue P24 (1) | CD-920-6 Blue P24 (1) | |
| LCMA25 LCMD25 SCMS25 | Class 2R 25mm ² | 16.5 16.5 19.5 | — | — | — | — | — | CD-2001-4 Gray P29 (1) | CD-920-4 Gray P29 (1) | |
| LCMA35 LCMD35 SCMS35 | Class 2R 35mm ² | 19.0 19.0 19.5 | — | — | — | — | — | CD-2001-4 Gray P29 (1) | CD-920-4 Gray P29 (1) | |
| LCMA50 LCMD50 SCMS50 | Class 2R 50mm ² | 21.8 21.8 26.0 | — | — | — | — | — | CD-2001-1 Green P37 (1) | CD-920-1 Green P37 (1) | |
| LCMA70 LCMD70 SCMS70 | Class 2R 70mm ² | 24.8 24.8 27.5 | — | — | — | — | — | CD-2001-2/0 Black P45 (2) | CD-920-2/0 Black P45 (2) | |
| LCMA95 LCMD95 SCMS95 | Class 2R 95mm ² | 26.0 26.0 28.5 | — | — | — | — | — | CD-2001-4/0 Purple P54 (2) | CD-920-4/0 Purple P54 (2) | |
| LCMA120 LCMD120 SCMS120 | Class 2R 120mm ² | 26.0 26.0 30.0 | — | — | — | — | — | CD-2001-250 Yellow P62 (2) | CD-920-250 Yellow P62 (2) | |
| LCMA150 LCMD150 SCMS150 | Class 2R 150mm ² | 29.0 29.0 30.0 | — | — | — | — | — | CD-2001-300 White P66 (2) | CD-920-300 White P66 (2) | |
| LCMA185 LCMD185 SCMS185 | Class 2R 185mm ² | 29.7 29.7 32.0 | — | — | — | — | — | CD-2001-400 Blue P76 (2) | CD-920-400 Blue P76 (2) | |
| LCMA240 LCMD240 SCMS240 | Class 2R 240mm ² | 36.5 36.5 37.5 | — | — | — | — | — | CD-2001-500 Brown P87 (2) | CD-920-500 Brown P87 (2) | |
| LCMA300 LCMD300 SCMS300 | Class 2R 300mm ² | 41.8 41.8 39.0 | — | — | — | — | — | — | CD-920-600 Green P94 (2) | |
| LCMA400 LCMD400 SCMS400 | Class 2R 400mm ² | 46.3 46.3 49.0 | — | — | — | — | — | — | CD-920-750 CD-940-750** Black P106 (2) | |
| LCMA500 LCMD500 SCMS500 | Class 2R 500mm ² | 48.0 48.0 49.5 | — | — | — | — | — | — | CD-940-1000** White P125 (3) | |
| LCMA630 LCMD630 SCMS630 | Class 2R 630mm ² | 57.7 57.7 67.0 | — | — | — | — | — | — | CD-940-1000** White P125 (4) | |
| LCMA630 LCMD630 | Class G 1000 kcmil | 57.7 | — | — | — | — | — | — | CD-940-750A** Red P125 (1) CD-940-1000** White P125 (2) | |

**CD-920 dies can be used with CT-940CH and CT-2940 tools with CD-940-DA adapter.

***CD-940 dies to be used exclusively with CT940CH and CT-2940 tools.

****Maximum size: 120mm² lugs and splices.

*****LCMA6, LCMD6, LCMA16, LCMD16, SCMS10 and SCMS16 connectors are UL Recognized.

*****CT-2931/E is CE approved.



**For Instructions in Local Languages
and Technical Support:**

http://www.panduit.com/resources/install_maintain.asp



www.panduit.com

E-mail:
cs@panduit.com

Fax:
(815)485-5839