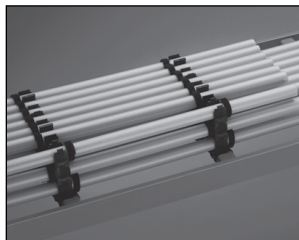
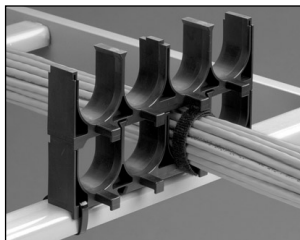




STACKABLE CABLE RACK SPACERS INSTALLATION INSTRUCTIONS



- 1) Secure bottom level of Stackable Cable Rack Spacer to the application surface, i.e. ladder rack rung with two standard cross-section *PANDUIT PAN-TY* Cable Ties (Figures 1, 2, and 3).
- 2) Install cable or cable bundles into each of the cable retaining areas.
- 3) Secure cable to the cable retaining post with *PANDUIT PAN-TY* Cable Ties, *BELT-TY* In-Line Cable Ties, or *TAK-TY* Hook and Loop Cable Ties up to 0.33" in width.
- 4) Installation of the next level of Stackable Cable Rack Spacers is accomplished by sliding the male dovetail into the female dovetail slot (Figures 4, 5, and 6). The latch(s) will lock the parts into position. To unlock these parts, use a screwdriver or a small tool to release latch(s) and slide in opposite direction.
- 5) Repeat steps 2, 3, and 4 until a maximum stack height is achieved. *PANDUIT* recommends a maximum stack height of five for the CRS6-X and CRS1-X. A maximum stack height of four is recommended for the CRS1-125-X and CRS4-125-X. Stackable Cable Rack Spacers are reversible to allow cable retaining posts to be alternated (Figure 7).

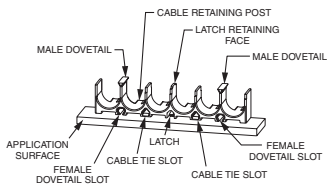


Figure 1

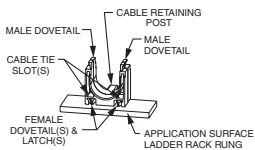


Figure 2

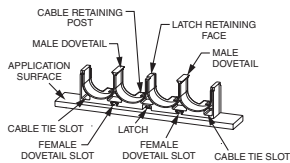


Figure 3

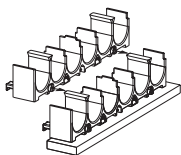


Figure 4

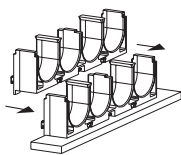


Figure 5

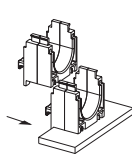


Figure 6

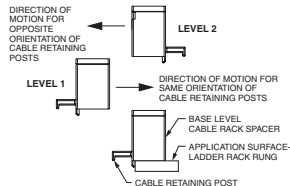


Figure 7

