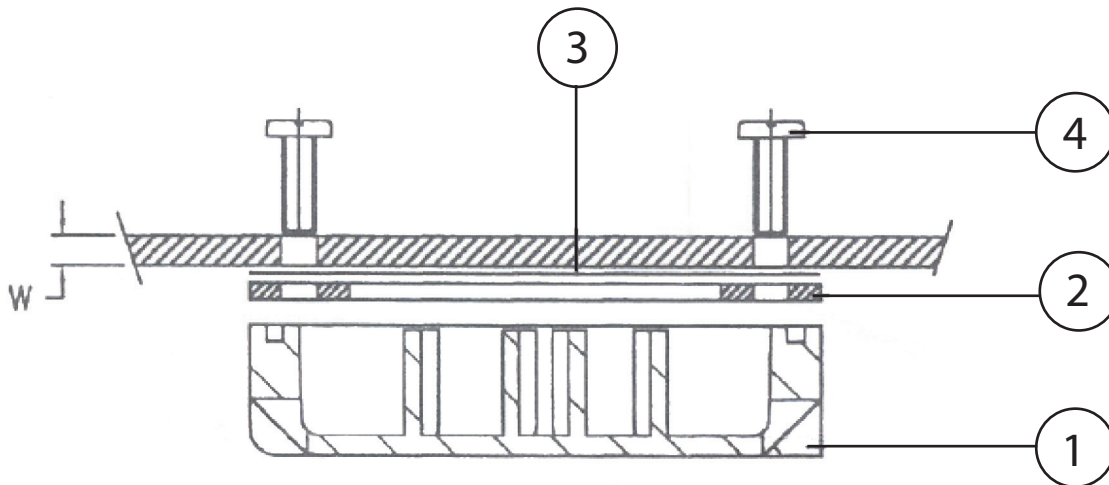


INSTRUCTIONS CM368

© Panduit Corp. 2008

Assembling Drain Vent

1. Drain vent should be fixed at the bottom outside surface of the enclosure.
2. Paste the sticker template on the enclosure body.
3. Drill holes to size on body per sticker template.
4. Remove the sticker template after drilling.
5. Enclosure surface / enclosure body should be free from burr and fibre pull-outs.
6. Select suitable screws as per chart.
7. Assemble with enclosure, drain vent with EPDM gasket and screws.



SCREW SELECTION CHART

Parts of Kit

Wall Thick. "W"	M4 Screw Length "L"
.063" - .138" (1.6 - 3.5 mm.)	.315" (8 mm.)
.157" - .217" (4.0 - 5.5 mm.)	.394" (10 mm.)

S. No.	Description	Material	Qty.
1	Drain Vent Cover	SMC	1
2	Gasket	EPDM-Rubber	1
3	Sticker Template	Adhesive	1
4	M4x"L" CH.HD.Screw	Stainless Steel	4+4