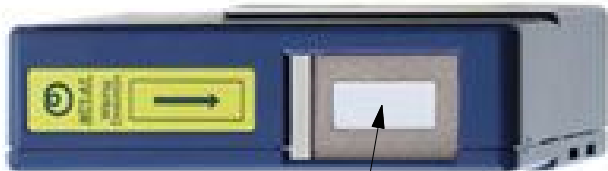


THIS COPY IS PROVIDED ON A RESTRICTED BASIS AND IS NOT TO BE USED IN ANY WAY DETRIMENTAL TO THE INTERESTS OF PANDUIT CORP.


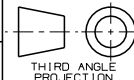


FLAT CLEANING SURFACE

PANDUIT PART NUMBER	DESCRIPTION
FMTPFCT	MPO/MTP FEMALE REEL CLEANING TOOL
APPROXIMATE PRODUCT DIMENSIONS	
3.2 X 5.0 X 1.4 inches [ 81 X 127 X 36 mm ]	

NOTES:

1. THIS PRODUCT CLEANS SINGLEMODE AND MULTIMODE FERRULE ENDFACES OF MPO/MTP CONNECTORS WITHOUT GUIDE PINS (NOT INSTALLED IN A MPO/MTP ADAPTER).
2. THE PRODUCT HOUSING INCORPORATES AN ANTI-STATIC AGENT.
3. THE PRODUCT DESIGN ALLOWS FOR ONE-HANDED USE.
  - A. DEPRESSING A LEVER ON THE CLEANING TOOL OPENS THE PROTECTIVE SHUTTER, ADVANCES, AND EXPOSES A FRESH PORTION OF CLEANING CLOTH. RELEASING THE LEVER CLOSES THE SHUTTER.
  - B. WIPING THE FERRULE ENDFACE ON THE EXPOSED CLEANING CLOTH IN A SPECIFIED DIRECTION CLEANS THE CONNECTOR FERRULE ENDFACE.
4. THE CLEANING CLOTH:
  - A. IS AN ULTRA CLEAN MICRO-FIBER CLOTH THAT CAPTURES DEBRIS AND OTHER CONTAMINATION, DOES NOT FRAY, AND DOES NOT LEAVE ANY FIBROUS MATERIALS ON THE FERRULE ENDFACES BEING CLEANED.
  - B. PROVIDES APPROXIMATELY 400 CLEANINGS.
  - C. DOES NOT REQUIRE THE USE OF ADDITIONAL WET CLEANING AGENTS.
  - D. ALLOWS FOR USER REPLACEMENT OF CLEANING REEL.
5. OPERATING TEMPERATURE: 0 TO 40 °C
6. STORAGE TEMPERATURE: -20 TO 60 °C
7. ALL MATERIALS AND COMPONENTS USED MEET THE MATERIAL RESTRICTIONS OF RoHS, (EUROPEAN DIRECTIVE 2002/95/EC ON THE RESTRICTION OF HAZARDOUS SUBSTANCES) AS PROPOSED BY THE RoHS TECHNICAL ADAPTATION COMMITTEE.

										MPO/MTP FEMALE REEL CLEANING TOOL		
										CUSTOMER DRAWING		
										 <b>PANDUIT</b> ™ CORP. TINLEY PARK, ILL 60477		
										 THIRD ANGLE PROJECTION		
										ALL DIMENSIONS ARE GIVEN IN INCHES UNLESS OTHERWISE SPECIFIED. DIMENSIONAL TOLERANCES ARE: (.X) (.XXX) ± .010 (0.3) (.XX) ± .03 (0.8) ANGLES		
										DRAWING FILENAME MO1893ZN_DC_00A.prt		
										SCALE NONE		
										DRAWN BY MC		
										REVIEW DRAWING NUMBERS		
										PART NO. FMTPFCT		
										DATE 12-11-06		
										DRAWING NO. 01893-56		
										SIZE A		
REV	DATE	BY	CHK	DESCRIPTION	ECN	R	CUST	SUP	OTH	CHK'D		
R	01-05-07	MC		RELEASED TO PRODUCTION	01893-56							