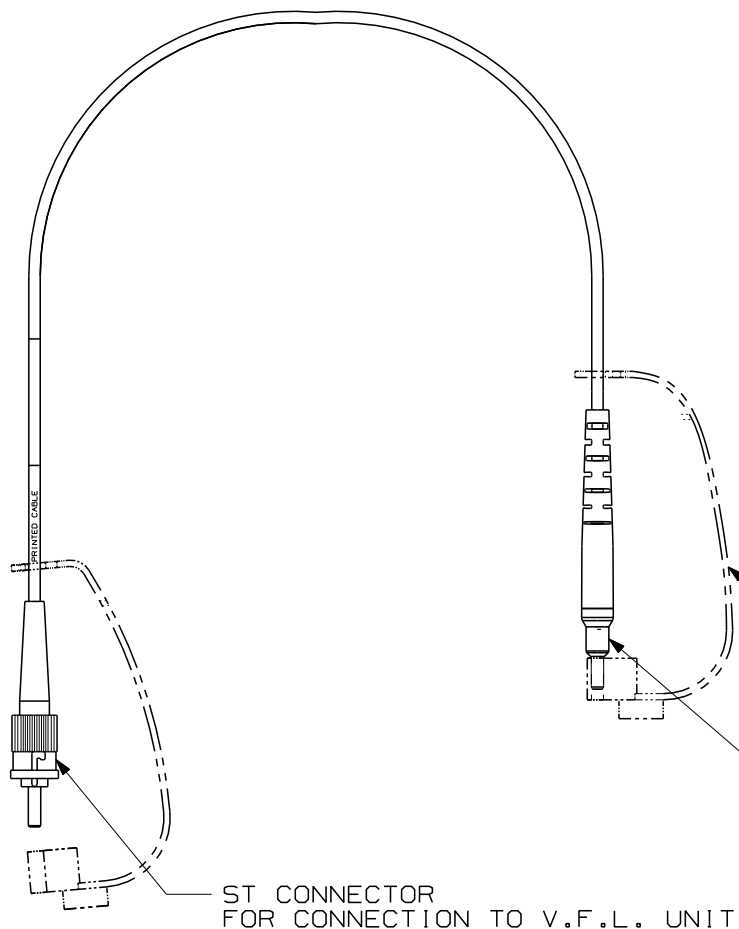


THIS COPY IS PROVIDED ON A RESTRICTED BASIS AND IS NOT TO BE USED IN ANY WAY DETRIMENTAL TO THE INTERESTS OF PANDUIT CORP.



PANDUIT PART NUMBER	DESCRIPTION
FVFLPC-1.25SMY	VFL SM 1.25mm UNIVERSAL PATCHCORD

NOTES:

- SEE CURRENT CATALOG FOR ADDITIONAL PART NUMBER SUFFIXES TO INDICATE PACKAGE QUANTITY.
- CONSTRUCTED WITH 9/125 MICRON SINGLEMODE CABLE AND A ZIRCONIA SPLIT SLEEVE.
- EXTRA SPLIT SLEEVES ARE PROVIDED AS REPLACEMENTS.
- PATCHCORD LENGTH IS 20.3 cm (8").
- ALL MATERIALS AND COMPONENTS USED MUST MEET THE MATERIAL RESTRICTIONS OF RoHS, (EUROPEAN DIRECTIVE 2002/95/EC ON THE RESTRICTIONS OF HAZARDOUS SUBSTANCES) AS PROPOSED BY THE RoHS TECHNICAL ADAPTATION COMMITTEE.

TETHERED DUSTCAP  
(2 SUPPLIED)

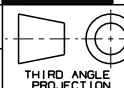
INTERFACE  
FOR CONNECTION TO PRE-POLISHED  
CONNECTOR WITH 1.25mm FERRULE

ST CONNECTOR  
FOR CONNECTION TO V.F.L. UNIT

VFL SM 1.25mm UNIVERSAL PATCHCORD  
CUSTOMER DRAWING



**PANDUIT**™  
CORP.  
TINLEY PARK, ILL 60477



THIRD ANGLE  
PROJECTION  
DRAWN BY  
MC

DATE  
12-15-04

CHK'D  
MMW

ALL DIMENSIONS ARE GIVEN IN INCHES,  
UNLESS OTHERWISE SPECIFIED.  
DIMENSIONAL TOLERANCES ARE:  
(.X) (.XXX) ± .010 (0.3)  
(.XX) ± .03 (0.8) ANGLES

REVIEW DRAWING NUMBERS

DRAWING FILENAME  
M01893AL\_DC-Y\_01B.prt  
SCALE  
NONE

PART NO.  
FVFLPC-1.25SMY

DRAWING NO.  
01893-58  
SIZE  
A

REV	DATE	BY	CHK	DESCRIPTION	ECN	R	CUST	SUP	OTH
2	01-18-07	MC		RELEASED TO PRODUCTION	01893-58				