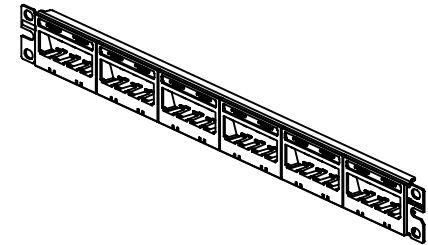
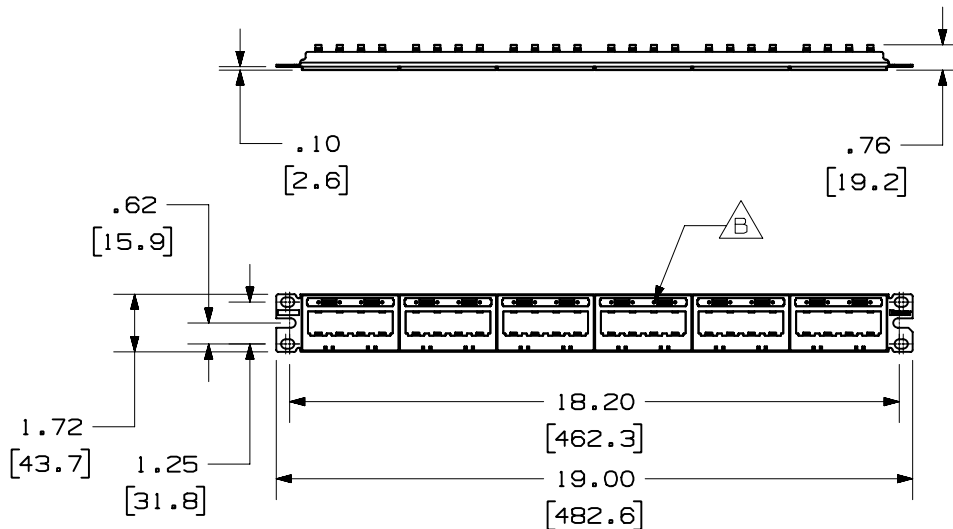



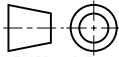
THIS COPY IS PROVIDED ON A RESTRICTED BASIS AND IS NOT TO BE USED IN ANY WAY DETRIMENTAL TO THE INTERESTS OF PANDUIT CORP.

PANDUIT P/N	WEIGHT
UICMPP24BL	.52 LB/EACH PC (235.7 g/EACH PC)

NOTES:

1. SEE CURRENT CATALOG FOR ADDITIONAL PART NUMBER SUFFIXES TO INDICATE COLOR AND OR PACKAGE QUANTITY.
2. SEE CATALOG FOR COMPLETE LIST OF PARTS APPLICABLE FOR USE WITH THIS PART.
3. DIMENSIONS IN PARENTHESES ARE IN METRIC.
4. PART INCLUDES:
 - 1- METAL STAMPING
 - 6- 4 POSITION FACEPLATE WITH 1 LABEL POCKET (ASSEMBLED TO METAL STAMPING)
 - 6- CLEAR LABEL COVER
 - 1- SCREW KIT (INCLUDES FOUR #12-24 SCREWS)
 - 1- SCREW KIT (INCLUDES FOUR M6 SCREWS)
5. LABELS SOLD SEPARATELY.



MODEL FILENAME M01207AB_UICMPP24BL_07.PRT		SIZE A
DRAWING FILENAME M01207AB_DC_07A.PRT		
MINI-COM™ ULTIMATE ID™ 24 PORT MODULAR PATCH PANEL WITH 1 LABEL POCKET PER FACEPLATE CUSTOMER DRAWING		
 PANDUIT ™ CORP. TINLEY PARK, ILL 60477		I.I. NUMBER N/A
 THIRD ANGLE PROJECTION		PRODUCT SPEC N/A
		WORK INSTRUCTION N/A
		SCALE NONE
		PART NO. UICMPP24BL
ALL DIMENSIONS ARE GIVEN IN INCHES, UNLESS OTHERWISE SPECIFIED. DIMENSIONAL TOLERANCES ARE: (.X) ± (.XXX) ± .010(.3) (.XX) ± .031(.8) ANGLES ±		DRAWING NO. 01207-07
DRAWN BY JsP		
DATE 7-17-02		
CHK'D JAJP		

REV	DATE	BY	CHK	DESCRIPTION	ECN	R	CUST	SUP	OTH
2	3-4-04	JsP		B. ADDED ICON HOLES TO EACH FACEPLATE.	01207-07				
1	5-21-03	JsP	PBD	A. ADDED M6 SCREWS TO PART.	01207-07				
R	7-17-02	JsP	JAJP	RELEASED TO PRODUCTION	01207-07				