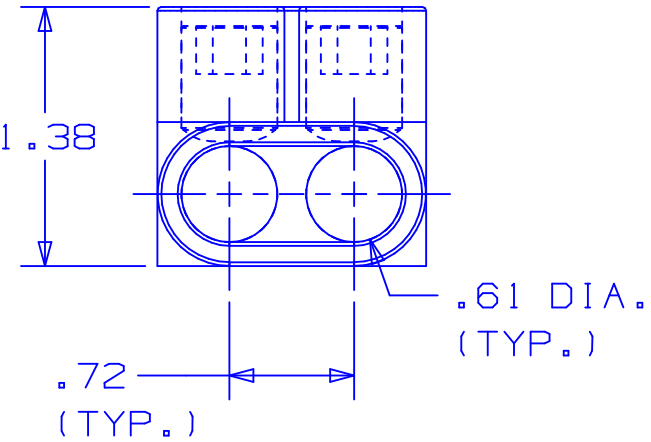


TWO PORT CONNECTOR BLOCK SHOWN WITH PLASTIC CLOSURE PLUGS REMOVED. SEE TABLE FOR DIMENSIONS OF PARTS WITH ADDITIONAL PORTS.



- NOTES:
1. UL 486B LISTED. DUAL RATED CU9AL FOR ALUMINUM OR COPPER CONDUCTORS. MEETS OR EXCEEDS ANSI C119.4
 2. WIRE RANGE: 2/0-#14 AWG STR, #10-#14 AWG SOL. ONLY ONE CONDUCTOR PER PORT ALLOWED.
 3. STRIP LENGTH: .56 +.06/-0
 4. HEX KEY SIZE: 3/16", TIGHTENING TORQUE
#3-2/0 AWG: 50 IN-LB.
#6-#4 AWG: 45 IN-LB.
#8 AWG: 40 IN-LB.
#14-#10 AWG: 35 IN-LB.
 5. VOLTAGE RATING: 600 V. MAX. BUILDING WIRE, 1000 V. MAX. IN SIGNS & FIXTURES.
 6. TEMPERATURE RATING: 90° C.
 7. CONNECTOR BLOCK BODY, AND CLAMPING SCREWS ARE MADE FROM ALUMINUM. PORTS IN CONNECTOR BLOCK ARE PREFILLED WITH AN OXIDE-INHIBITING COMPOUND.
 8. INSULATION MATERIAL IS CLEAR PVC.
 9. CLAMPING SCREW ACCESS PORTS AND ALL WIRE ENTRY PORTS ARE PROVIDED WITH REMOVABLE PLASTIC CLOSURE PLUGS.
 10. ALL DIMENSIONS SHOWN ARE NOMINAL.
 11. PACKAGE QTY: -12 = 12 PCS.
 -6 = 6 PCS.
 -4 = 4 PCS.

PART NUMBER	# CONDUCTOR PORTS	DIM "L"
PCSB2/0-2-12	2	1.63
PCSB2/0-3-6	3	2.36
PCSB2/0-4-6	4	3.08
PCSB2/0-5-6	5	3.81
PCSB2/0-6-6	6	4.53
PCSB2/0-7-4	7	5.25
PCSB2/0-8-4	8	5.98

--	----	--	--	WIDTH DIMENSION WAS: 1.75; REVISED NOTE 9.	-----	--	--	
05	6/04	JHNU		REVISED DIM "L" IN TABLE: 1.63 WAS 1.62, 2.36 WAS 2.25, 3.08 WAS 3.00, 3.81 WAS 3.75, 4.53 WAS 4.50, & 5.98 WAS 6.00.				
04	10/99	ES	RLS	CHANGED DIM "L" IN TABLE: 2.25 WAS 2.38, 3.00 WAS 3.12 & 3.75 WAS 3.88	08005	JCJ	TRO	
03	10/99	ES	RLS	CHANGED DIM "L" IN TABLE: 4.50 WAS 4.62, 5.25 WAS 5.38 & 6.00 WAS 6.12	07968	JCJ	TRO	
02	9/99	ES	RLS	NOTE 4 WAS TIGHTEN TORQUE 120 IN-LB	07931	JCJ	TRO	
01	8/99	ES	RLS	ADDED 509D TO UL SYMBOL, UPDATED NOTES 2,4 & 5.	07873	JCJ	TRO	
REV	DATE	BY	CHK	DESCRIPTION	ECN #	CUST	PM	



LISTED
509D

C41244_05

PANDUIT

CORP.

TINLEY PARK, ILLINOIS

MULTI-TAP INSULATED CONNECTORS
PCSB 2/0 SERIES

DRAWN BY MS CHK'D RLS SCALE N/A DRAWING NO. C41244