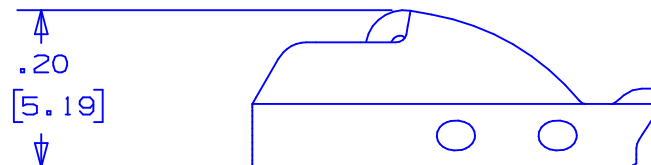
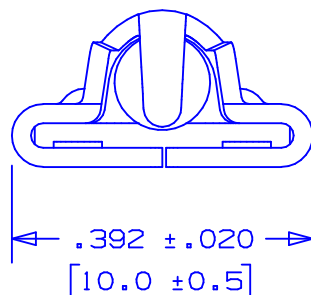
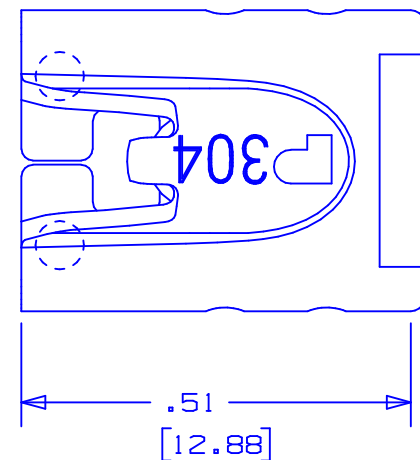



## NOTES:

1. TO BE USED WITH PANDUIT METAL BANDING MBH-MR & MBH-TLR.
2. APPLICATION TOOL: GS4MT, ST2MT, PPTMT, ST3MT,<sup>(A)</sup> OR HTMT.
3. TOOL TENSION SETTING: 4 TO 8 (GS4MT AND PPTMT ONLY)
4. DIMENSIONS IN [ ] ARE MILLIMETERS.
- <sup>(B)</sup> 5. MINIMUM LOOP TENSILE STRENGTH: 250 LBS (1112 N)
6. TOLERANCES: .X =  $\pm .030$  [  $\pm .762$  ]  
                   .XX =  $\pm .020$  [  $\pm .508$  ]  
                   .XXX =  $\pm .010$  [  $\pm .254$  ]  
                   ANGLES =  $\pm 2^\circ$



S41130\_01

								 PANDUIT CORP.      TINLEY PARK, ILLINOIS			
01	10/03	BRH	DPN	(A) ADDED ST3MT TO APPLICATION TOOL NOTE.	11162	CCH	JJB	METAL TIE HEAD HEAVY PART# MTHH-C 304 STAINLESS STEEL			
				(B) ADDED TENSILE STRENGTH NOTE.							
00	11/02	JAMB	DPN	RELEASED	10401	CCH	JJB				
REV	DATE	BY	CHK	DESCRIPTION	ECN #	PM	CUST	DRAWN BY	CHK'D	SCALE	DRAWING NO.
								JAMB	DPN	4×	S41130