

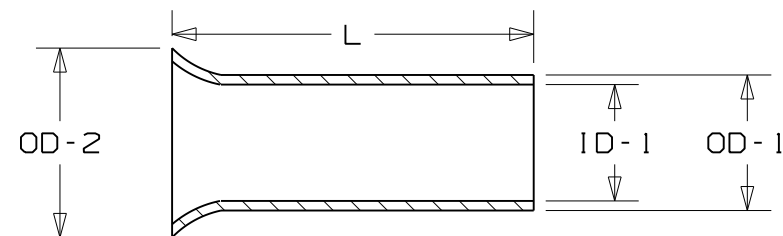
PART NO	WIRE RANGE AWG (mm ²)	STRIP LENGTH +0 -1/32 (-0.791)	L	ID-1	OD-1	OD-2	INSTALL. TOOLS
F73-5	24 (0,25)	7/32 (5,0)	0.20 (5,0)	0.03 (0,8)	0.04 (1,1)	0.07 (1,7)	CT-1002
F73-7		9/32 (7,0)	0.28 (7,0)	0.03 (0,8)	0.04 (1,1)	0.07 (1,7)	
F74-5	24 (0,34)	7/32 (5,0)	0.20 (5,0)	0.04 (0,9)	0.05 (1,2)	0.07 (1,8)	CT-1123
F74-7		9/32 (7,0)	0.28 (7,0)	0.04 (0,9)	0.05 (1,2)	0.07 (1,8)	
F75-6	22 (0,50)	1/4 (6,0)	0.24 (6,0)	0.04 (1,0)	0.05 (1,3)	0.08 (2,1)	CT-1002
F75-8		5/16 (8,0)	0.31 (8,0)	0.04 (1,0)	0.05 (1,3)	0.08 (2,1)	
F75-10		13/32 (10,0)	0.39 (10,0)	0.04 (1,0)	0.05 (1,3)	0.08 (2,1)	
F76-6	20 (0,75)	1/4 (6,0)	0.24 (6,0)	0.05 (1,2)	0.06 (1,5)	0.09 (2,3)	CT-1002
F76-8		5/16 (8,0)	0.31 (8,0)	0.05 (1,2)	0.06 (1,5)	0.09 (2,3)	
F76-10		13/32 (10,0)	0.39 (10,0)	0.05 (1,2)	0.06 (1,5)	0.09 (2,3)	
F76-12		15/32 (12,0)	0.47 (12,0)	0.05 (1,2)	0.06 (1,5)	0.09 (2,3)	
F77-6	18 (1)	1/4 (6,0)	0.24 (6,0)	0.06 (1,4)	0.07 (1,7)	0.10 (2,5)	CT-1002
F77-7		9/32 (7,0)	0.28 (7,0)	0.06 (1,4)	0.07 (1,7)	0.10 (2,5)	CT-1003
F77-8		5/16 (8,0)	0.31 (8,0)	0.06 (1,4)	0.07 (1,7)	0.10 (2,5)	CT-1123
F77-10		13/32 (10,0)	0.39 (10,0)	0.06 (1,4)	0.07 (1,7)	0.10 (2,5)	
F77-12		15/32 (12,0)	0.47 (12,0)	0.06 (1,4)	0.07 (1,7)	0.10 (2,5)	
F78-7	16 (1,50)	9/32 (7,0)	0.28 (7,0)	0.07 (1,7)	0.08 (2,0)	0.11 (2,8)	CT-1002
F78-8		5/16 (8,0)	0.31 (8,0)	0.07 (1,7)	0.08 (2,0)	0.11 (2,8)	
F78-10		13/32 (10,0)	0.39 (10,0)	0.07 (1,7)	0.08 (2,0)	0.11 (2,8)	
F78-12		15/32 (12,0)	0.47 (12,0)	0.07 (1,7)	0.08 (2,0)	0.11 (2,8)	
F78-15		19/32 (15,0)	0.59 (15,0)	0.07 (1,7)	0.08 (2,0)	0.11 (2,8)	
F78-18		23/32 (18,0)	0.71 (18,0)	0.07 (1,7)	0.08 (2,0)	0.11 (2,8)	
F78-20		25/32 (20,0)	0.79 (20,0)	0.07 (1,7)	0.08 (2,0)	0.11 (2,8)	

PART NO	WIRE RANGE AWG (mm ²)	STRIP LENGTH +0 -1/32 (-0.791)	L	ID-1	OD-1	OD-2	INSTALL. TOOLS
F80-7	14 (2,50)	9/32 (7,0)	0.28 (7,0)	0.09 (2,2)	0.10 (2,5)	0.13 (3,4)	CT-1002
F80-8		5/16 (8,0)	0.31 (8,0)	0.09 (2,2)	0.10 (2,5)	0.13 (3,4)	
F80-10		13/32 (10,0)	0.39 (10,0)	0.09 (2,2)	0.10 (2,5)	0.13 (3,4)	
F80-12		15/32 (12,0)	0.47 (12,0)	0.09 (2,2)	0.10 (2,5)	0.13 (3,4)	
F80-15		19/32 (15,0)	0.59 (15,0)	0.09 (2,2)	0.10 (2,5)	0.13 (3,4)	
F80-18		23/32 (18,0)	0.71 (18,0)	0.09 (2,2)	0.10 (2,5)	0.13 (3,4)	
F80-20		25/32 (20,0)	0.79 (20,0)	0.09 (2,2)	0.10 (2,5)	0.13 (3,4)	
F81-9	12 (4)	11/32 (8,0)	0.35 (9,0)	0.11 (2,8)	0.13 (3,2)	0.16 (4,0)	CT-1002
F81-10		13/32 (10,0)	0.39 (10,0)	0.11 (2,8)	0.13 (3,2)	0.16 (4,0)	CT-1003
F81-12		15/32 (12,0)	0.47 (12,0)	0.11 (2,8)	0.13 (3,2)	0.16 (4,0)	CT-1123
F81-15		19/32 (15,0)	0.59 (15,0)	0.11 (2,8)	0.13 (3,2)	0.16 (4,0)	
F81-18		23/32 (18,0)	0.71 (18,0)	0.11 (2,8)	0.13 (3,2)	0.16 (4,0)	
F81-20		25/32 (20,0)	0.79 (20,0)	0.11 (2,8)	0.13 (3,2)	0.16 (4,0)	
F82-10	10 (6)	13/32 (10,0)	0.39 (10,0)	0.14 (3,5)	0.15 (3,9)	0.19 (4,7)	CT-1003
F82-12		15/32 (12,0)	0.47 (12,0)	0.14 (3,5)	0.15 (3,9)	0.19 (4,7)	
F82-15		19/32 (15,0)	0.59 (15,0)	0.14 (3,5)	0.15 (3,9)	0.19 (4,7)	
F82-18		23/32 (18,0)	0.71 (18,0)	0.14 (3,5)	0.15 (3,9)	0.19 (4,7)	
F82-20		25/32 (20,0)	0.79 (20,0)	0.14 (3,5)	0.15 (3,9)	0.19 (4,7)	
F83-12		15/32 (12,0)	0.47 (12,0)	0.18 (4,5)	0.19 (4,9)	0.23 (5,8)	
F83-15	19/32 (15,0)	0.59 (15,0)	0.18 (4,5)	0.19 (4,9)	0.23 (5,8)	CT-1004	
F83-18	23/32 (18,0)	0.71 (18,0)	0.18 (4,5)	0.19 (4,9)	0.23 (5,8)	CT-1123	
F83-20	25/32 (20,0)	0.79 (20,0)	0.18 (4,5)	0.19 (4,9)	0.23 (5,8)	CT-1104	
F83-25	31/32 (25,0)	0.98 (25,0)	0.18 (4,5)	0.19 (4,9)	0.23 (5,8)		
F84-12	6 (16)	15/32 (12,0)	0.47 (12,0)	0.23 (5,8)	0.24 (6,2)	0.30 (7,5)	CT-1004
F84-15		19/32 (15,0)	0.59 (15,0)	0.23 (4,8)	0.24 (6,2)	0.30 (7,5)	
F84-18		23/32 (18,0)	0.71 (18,0)	0.23 (4,8)	0.24 (6,2)	0.30 (7,5)	
F84-20		25/32 (20,0)	0.79 (20,0)	0.23 (4,8)	0.24 (6,2)	0.30 (7,5)	
F84-25		31/32 (25,0)	0.98 (25,0)	0.23 (4,8)	0.24 (6,2)	0.30 (7,5)	
F84-32		1 1/4 (32,0)	1.26 (32,0)	0.23 (5,8)	0.24 (6,2)	0.30 (7,5)	

PART NO	WIRE RANGE AWG (mm ²)	STRIP LENGTH +0 -1/32 (-0.791)	L	ID-1	OD-1	OD-2	INSTALL. TOOLS
F85-12	4 (25)	15/32 (12,0)	0.47 (12,0)	0.29 (7,3)	0.30 (7,7)	0.37 (9,5)	CT-1005
F85-15		19/32 (15,0)	0.59 (15,0)	0.29 (7,3)	0.30 (7,7)	0.37 (9,5)	
F85-18		23/32 (18,0)	0.71 (18,0)	0.29 (7,3)	0.30 (7,7)	0.37 (9,5)	
F85-25		31/32 (25,0)	0.98 (25,0)	0.29 (7,3)	0.30 (7,7)	0.37 (9,5)	
F85-32		1 1/4 (32,0)	1.26 (32,0)	0.29 (7,3)	0.30 (7,7)	0.37 (9,5)	
F86-18	2 (35)	23/32 (18,0)	0.71 (18,0)	0.33 (8,3)	0.34 (8,7)	0.43 (11,0)	CT-1006
F86-20		25/32 (20,0)	0.79 (20,0)	0.33 (8,3)	0.34 (8,7)	0.43 (11,0)	
F86-25		31/32 (25,0)	0.98 (25,0)	0.33 (8,3)	0.34 (8,7)	0.43 (11,0)	
F86-32		1 1/4 (32,0)	1.26 (32,0)	0.33 (8,3)	0.34 (8,7)	0.43 (11,0)	
F87-18	1 (50)	23/32 (18,0)	0.71 (18,0)	0.41 (10,3)	0.43 (10,9)	0.51 (13,0)	CT-1006
F87-22		7/8 (22,0)	0.87 (22,0)	0.41 (10,3)	0.43 (10,9)	0.51 (13,0)	
F87-25		31/32 (25,0)	0.98 (25,0)	0.41 (10,3)	0.43 (10,9)	0.51 (13,0)	
F87-32		1 1/4 (32,0)	1.26 (32,0)	0.41 (10,3)	0.43 (10,9)	0.51 (13,0)	
F89-25	2/0 (70)	31/32 (25,0)	.98 (25,0)	0.49 (12,5)	0.52 (13,3)	0.59 (15,0)	---
F89-32		1-1/4 (32,0)	1.26 (32,0)	0.49 (12,5)	0.52 (13,3)	0.59 (15,0)	
F90-25	3/0 (95)	31/32 (25,0)	.98 (25,0)	0.57 (14,5)	0.60 (15,3)	0.67 (17,0)	---
F90-30		1-3/16 (30,0)	1.18 (30,0)	0.57 (14,5)	0.60 (15,3)	0.67 (17,0)	
F90-32		1-1/4 (32,0)	1.26 (32,0)	0.57 (14,5)	0.60 (15,3)	0.67 (17,0)	
F91-32	4/0 (120)	1-1/4 (32,0)	1.26 (32,0)	0.65 (16,5)	.69 (17,5)	0.75 (19)	---
F91-40		1-3/4 (40,0)	1.57 (40,0)	0.65 (16,5)	.69 (17,5)	0.75 (19)	
F92-32	300 (150)	1-1/4 (32,0)	1.26 (32,0)	0.73 (18,5)	.77 (19,5)	0.83 (21)	---
F92-38		1-1/2 (38,0)	1.50 (38,0)	0.73 (18,5)	.77 (19,5)	0.83 (21)	
F93-32	350 (185)	1-1/4 (32,0)	1.26 (32,0)	0.79 (20)	.83 (21,2)	0.93 (23,5)	---
F93-40		1-3/4 (44,0)	1.57 (44,0)	0.79 (20)	.83 (21,2)	0.93 (23,5)	
F94-40	400 (240)	1-3/4 (44,0)	1.57 (44,0)	0.90 (22,8)	.94 (24)	1.02 (25,8)	---

NOTES:

1. MATERIAL - COPPER, TIN PLATED
2. DIMENSIONS IN BRACKETS ARE IN mm OR mm²
3. FOR TOLERANCING REFER TO DIN 46228 PART 1
4. SEE www.panduit.com FOR PART NUMBER SUFFIX DESIGNATION FOR PACKAGE SIZE



10	10/11	LSM	Changed font for better legibility
09	7/11	SRB	Added Note #4
REV	DATE	BY	DESCRIPTION

CAD FILENAME/LAYERS

PANDUIT

CORP TINLEY PARK, ILLINOIS

FERRULE - NON-INSULATED

UNLESS OTHERWISE SPECIFIED, DIMENSIONAL TOLERANCES ARE:
 (.X) ± (.XXX) ±
 (.XX) ± ANGLES ±

UNLESS OTHERWISE SPECIFIED, ALL DIMENSIONS ARE GIVEN IN INCHES, THIRD ANGLE PROJECTION

SCALE NONE

DRAWN BY JKD MAT'L:

DATE 2/10/99

CHK'D SKB

DRAWING NO. A41670 DWG SIZE B