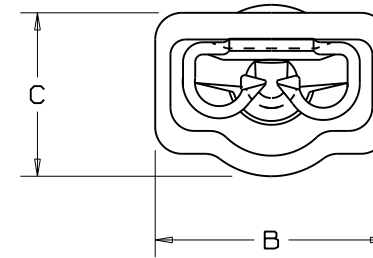
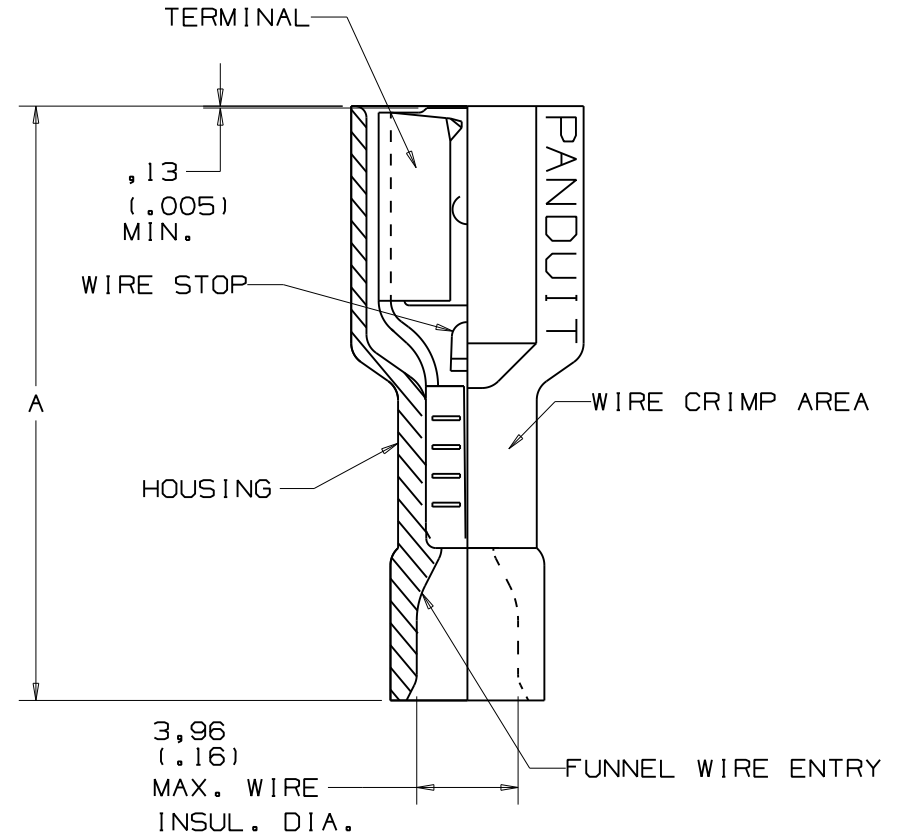


PART NUMBER		TAB SIZE	WIRE RANGE mm ²	DIMENSIONS mm		
PREFIX	PK			A ±.38	B ±.25	C ±.25
DMNF2-488F1B	-C -M	4,8 X 0,8 (.187 X .032)	1,5-2,5 (16-14)	19,8 (.78)	7,9 (.31)	5,5 (.22)
DMNF2-63F1B	-C -M	6,3 X 0,8 (.250 X .032)	1,5-2,5 (16-14)	21,3 (.84)	8,9 (.35)	5,5 (.22)



NOTES:

- USED FOR:
 - A. 600V MAX. VOLTAGE RATING.
 - B. 105° C (221°F) MAX. TEMP. RATING
 - C. STRANDED COPPER WIRE ONLY.
- PACKAGE QTY:
 - A. STD: C=100
 - B. BULK: M=1000
- MATERIAL:
 - A. STAMPING: CDA 260 BRASS, TIN PLATED
 - B. HOUSING: TYPE 6/6 NYLON, TRANSLUCENT BLUE
- WIRE STRIP LENGTH: 7,1 ^{+0,8} (9/32 ^{+1/32})
-0
- FIRST INSERTION FORCE: 53N (12 LB.) MAX
FIRST WITHDRAWAL FORCE: 53N (12 LB.) MAX
27N (6 LB.) MIN
- INSTALLATION TOOLS: REF. DWGS.
A41522, A41523, A41524, A41525
- DIMENSIONS IN BRACKETS ARE IN INCHES OR AWG.



06	12/08	BCT		MODIFIED PART DMNF2-48F1B TO DMNF2-488F1B		TRO		<p>TINLEY PARK, ILLINOIS</p> <p>1,5 -2,5 mm²; 4,8 / 6,3 TAB METRIC FULLY INSULATED FEMALE DISCONNECT</p>
05	7/03	KLFU		ADDED INTERNAL SERRATIONS				
04	1/01	RM	SKB	FILESPEC WAS N41505AA_PCD_03	8933	CCH	JAC	
03	10-97	JAMB		CHANGED PERIODS TO COMMAS ON ALL METRIC DIMENSIONS.	06433			
REV	DATE	BY	CHK	DESCRIPTION	ECN #	PM	CUST	DRAWN BY: JMV CHK'D: LSM SCALE: NONE DRAWING NO./CAD FILENAME: A41505