

PART NUMBER	WIRE RANGE AWG	MAX. WIRE INSUL. DIA.	HOUSING COLOR	DIMENSIONS in.		
				A $\pm .03$	B $\pm .010$	C $\pm .01$
DV18-145M	22-18	.15 (3,8)	RED	.97 (24,6)	.145 (3,7)	.03 (0,76)
DV14-145M	16-14	.17 (4,3)	BLUE	.97 (24,6)	.145 (3,7)	.03 (0,76)

NOTES:

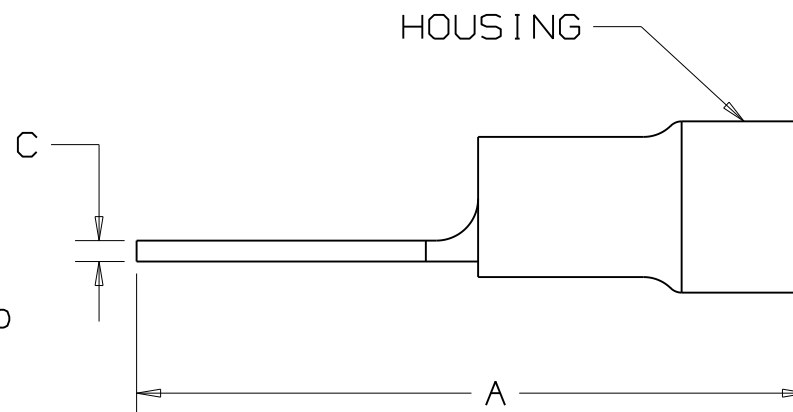
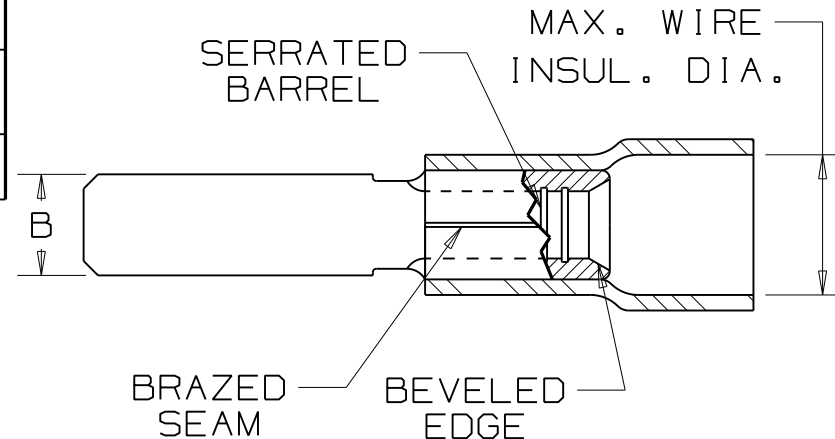
- UL RECOGNIZED AND CSA CERTIFIED FOR:
 - 600V. MAX. VOLTAGE RATING
 - 221° F (105° C) MAX. TEMP. RATING
 - FOR STRANDED COPPER WIRE ONLY
- MATERIAL:
 - STAMPING - .032" (0.8) THK COPPER
TIN PLATED
 - HOUSING - VINYL
- SEE www.panduit.com
FOR PART NUMBER SUFFIX DESIGNATION
FOR PACKAGE SIZE
- DIMENSIONS IN BRACKETS ARE IN MILLIMETERS
- INSTALLATION TOOLS:
 - UL RECOGNIZED AND CSA CERTIFIED:
CT-500, CT-550, CT-1550, CT-1551, CT-2500
 - PANDUIT APPROVED:
CT-100, CT-160, CT-250, CT-260, CT-400,
*CT-460, CT-600-A
*RECOMMENDED FOR DV14-145M ONLY
- WIRE STRIP LENGTH: $9/32^{+1/32}_{-0}$ (7.1 $^{+.8}_{-0}$)



CERTIFIED
LR31212



RECOGNIZED
E78522



PANDUIT

CORP.

TINLEY PARK, ILLINOIS

VINYL INSULATED .145 X .032
(3.68 X 0.81) MALE TAB

10	8/11	SHOR	ADDED INSTALLATION TOOLS
09	7/11	SB	Added note #3
REV	DATE	BY	DESCRIPTION

DRAWN BY
DAW

CHK'D

SCALE
NONE

DRAWING NO.
A41321