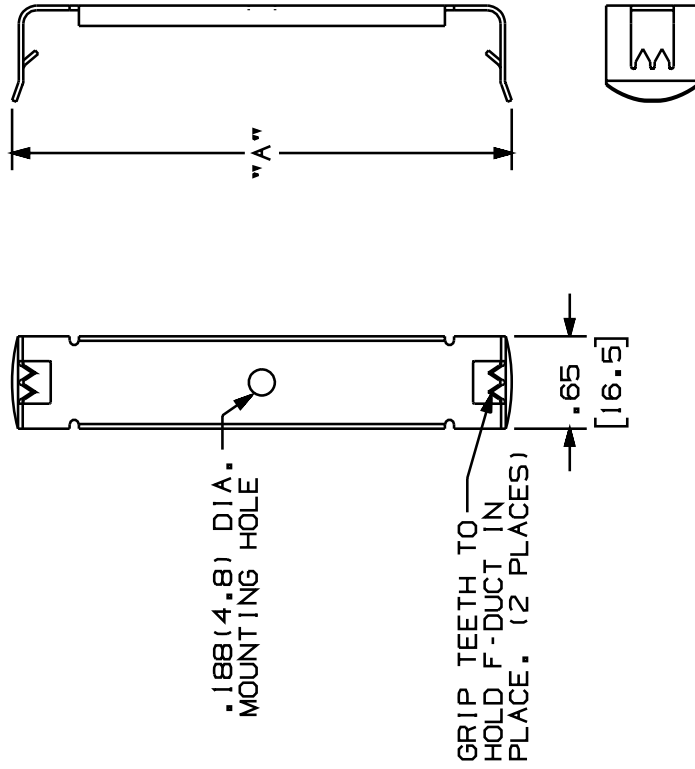


THIS COPY IS PROVIDED ON A RESTRICTED BASIS AND IS NOT TO BE USED IN ANY WAY DETRIMENTAL TO THE INTERESTS OF PANDUIT CORP.



PANDUIT PART NO.	DUCT WIDTH APPLIED TO	"A"	#8-32 X 1/4" SCREW INCLUDED	WEIGHT PER 100 PIECES
S1F	1.00 (25.4)	1.51 (38.4)	YES	1.3 LB (576 g)
SNS1F	1.00 (25.4)	1.51 (38.4)	NO	
S1.5F	1.50 (38.1)	2.01 (51.1)	YES	1.7 LB (758 g)
SNS1.5F	1.50 (38.1)	2.01 (51.1)	NO	
S2F	2.00 (50.8)	2.51 (63.8)	YES	2.0 LB (923 g)
SNS2F	2.00 (50.8)	2.51 (63.8)	NO	
S3F	3.00 (76.2)	3.51 (89.2)	YES	2.8 LB (1291 g)
SNS3F	3.00 (76.2)	3.51 (89.2)	NO	
S4F	4.00 (101.6)	4.51 (114.6)	YES	3.6 LB (1629 g)
SNS4F	4.00 (101.6)	4.51 (114.6)	NO	

NOTES:

- 1. SEE CURRENT CATALOG FOR ADDITIONAL PART NUMBER SUFFIXES TO INDICATE COLOR AND OR PACKAGE QUANTITY.
- 2. ONE SCREW PROVIDED FOR MOUNTING BRACKET AS NOTED IN CHART.
- 3. DIMENSIONS IN PARENTHESES ARE IN METRIC.

CAD FILENAME/LAYERS		D34301_SNS_F_CLIPS_C (D)	
PANDUIT CORP. TINLEY PARK, ILLINOIS			
"F" DUCT SNAP CLIP MOUNTING BRACKET (S1F, S1.5F, S2F, S3F, S4F, SNS1F, SNS1.5F, SNS2F, SNS3F, SNS4F) CUSTOMER DRAWING			
UNLESS OTHERWISE SPECIFIED, DIMENSIONAL TOLERANCES ARE: (.X) ± .031, (XX) ± .010 (.3) (.XX) ± .031, (ANGLES) ±		UNLESS OTHERWISE SPECIFIED, ALL DIMENSIONS ARE GIVEN IN INCHES, THIRD ANGLE PROJECTION.	
DRAWN BY:	MAT'L:	SCALE:	NONE
DW:		DRAWING NO.:	34301-06
DATE:	5/5/93	21 GA. C.R.S.	
CHK'D:			
REV	DATE	BY	CHK
R	5/5/93	DW	
RELEASED TO PRODUCTION		ECN	R
DESCRIPTION		CUST	SUP