

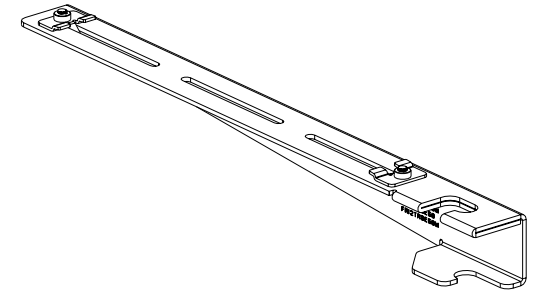
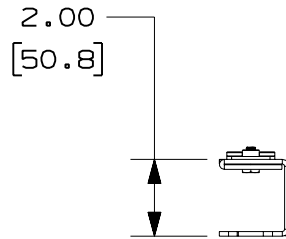
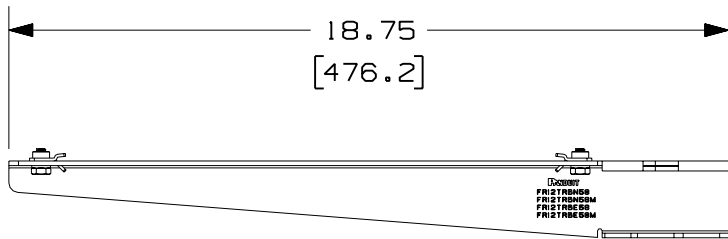
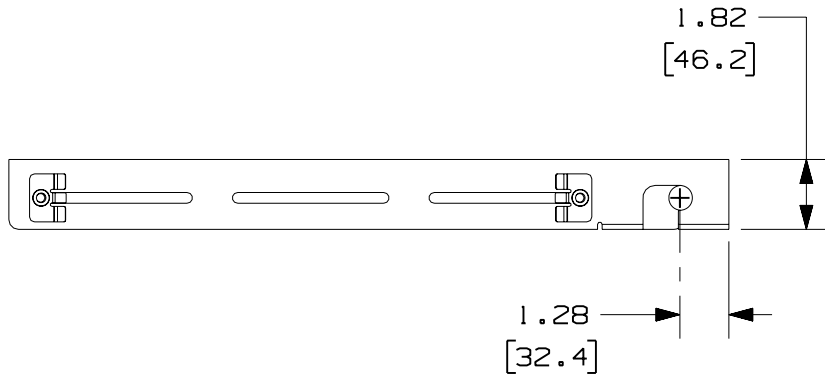


PANDUIT PART NUMBER	WEIGHT
FR12TRBE58 FR12TRBE58M	2.45 LB/EACH (1109g/EACH)



NOTES:

1. SEE CURRENT CATALOG FOR ADDITIONAL PART SUFFIXES TO INDICATE PACKAGE QUANTITY.
2. THE FIBERRUNNER 12x4 QUIKLOCK EXISTING THREADED ROD BRACKET IS USED TO SUPPORT THE FIBERRUNNER 12x4 CABLE ROUTING SYSTEM FROM A SECTION OF EXISTING 5/8" (M16) THREADED ROD.
3. THE FIBERRUNNER 12x4 QUIKLOCK EXISTING THREADED ROD BRACKET INCLUDES:
ONE (1) BRACKET ASSEMBLY,
TWO (2) 5/8-11 SPLIT LOCK NUTS (FR12TRBE58 ONLY),
TWO (2) M16x2 SPLIT LOCK NUTS (FR12TRBE58M ONLY),
ONE (1) 1/4-20 T-BOLT,
ONE (1) 1/4-20 HEX KEPS NUT
4. FINISH COLOR: BLACK (EXCEPT HARDWARE)
5. DIMENSIONS IN PARENTHESES ARE IN METRIC.



ENG. REF.: D37797CQ_DC_FR12TRBE58_01.prt

CAD FILENAME/LAYERS **FR12TRBE58.pdf**

PANDUIT CORP TINLEY PARK, ILLINOIS
 FIBERRUNNER 12x4 QUIKLOCK EXISTING THREADED ROD BRACKET - 5/8" (M16) THREADED ROD (FR12TRBE58, FR12TRBE58M) CUSTOMER DRAWING

REV	DATE	BY	CHK	DESCRIPTION	ECN	R	CUST	SUP	GMBH
-	-----	---	--	F. REVISED TO INCLUDE FR12TRBE58M.	-----	--	--		
-	-----	---	--	E. REVISED PART WEIGHT.	-----	--	--		
-	-----	---	--	D. REVISED GENERAL NOTES. C. REVISED CAD FILENAME.	-----	--	--		
1	8-2-06	MSO	RN	B. REVISED DRAWING TITLE. A. REVISED AND REDRAWN.	37797-45	RN	RN		

UNLESS OTHERWISE SPECIFIED, DIMENSIONAL TOLERANCES ARE:
 (.X) ± (.XXX) ±
 (.XX) ± .03 (.8) ANGLES ±

UNLESS OTHERWISE SPECIFIED, ALL DIMENSIONS ARE GIVEN IN INCHES, THIRD ANGLE PROJECTION.

DRAWN BY: JHNU
 DATE: 5-15-01
 CHECKED: CFG

MAT'L: STEEL

SCALE: NONE

DRAWING NO.: 37797-45
 DWG SIZE: A