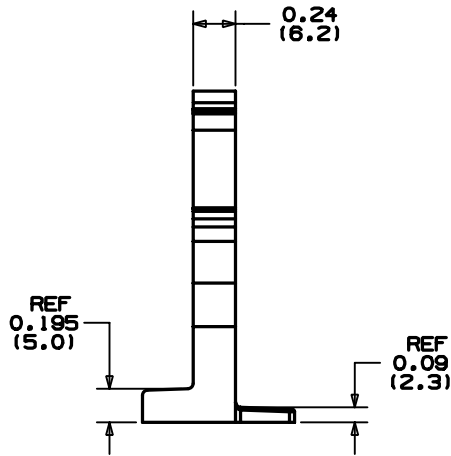
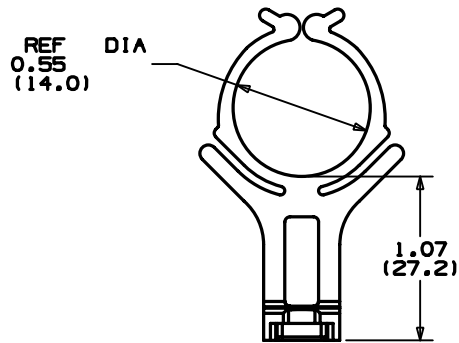
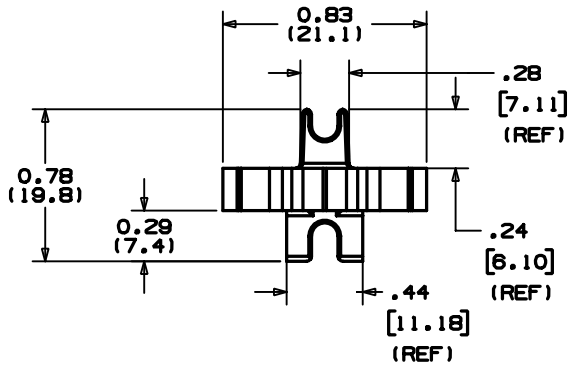


THIS COPY IS PROVIDED ON A RESTRICTED BASIS AND IS NOT TO BE USED IN ANY WAY DETRIMENTAL TO THE INTERESTS OF PANDUIT CORP.



PANDUIT PART NO.	MAX BUNDLE DIA $\frac{10}{(mm)}$	RECOMM. FASTENER	WEIGHT $\frac{lb}{(g)}/100$ pcs
BR.5-E6	0.50 (12.7)	#6 (M3) SCREW	0.75 (342)

NOTES:

1. SEE CURRENT PRICE SHEET FOR PART NUMBER SUFFIX DESIGNATION FOR PACKAGE SIZE.
2. COLOR: BLACK

DIMENSIONS IN BRACKETS ARE METRIC [ mm ]

CAD FILENAME/LAYERS G00239HE\_PB\_BR.5\_03

**PANDUIT** CORP. TINLEY PARK, ILLINOIS

BR.5-E6  
BUNDLE RETAINER

UNLESS OTHERWISE SPECIFIED, DIMENSIONAL TOLERANCES ARE:  
(.X) ±0.05 (1.3) (.XXX) ±0.010 (0.25)  
(.XX) ±0.02 (0.5) ANGLES ± 5°

UNLESS OTHERWISE SPECIFIED, ALL DIMENSIONS ARE GIVEN IN INCHES, THIRD ANGLE PROJECTION.

DRAWN BY CGSM

MAT'L:

SCALE NONE

DATE 2-8-01

RUBBER MODIFIED NYLON 6/6

DRAWING NO.

GBO239HE

DWG SIZE A

REV	DATE	BY	CHK	DESCRIPTION	ECN	R	CUST	SUP
3	7/18/03	JAD		CHANGE MATERIAL FROM ACETAL TO RUBBER MODIFIED NYLON 6/6	GBO239HE	3		