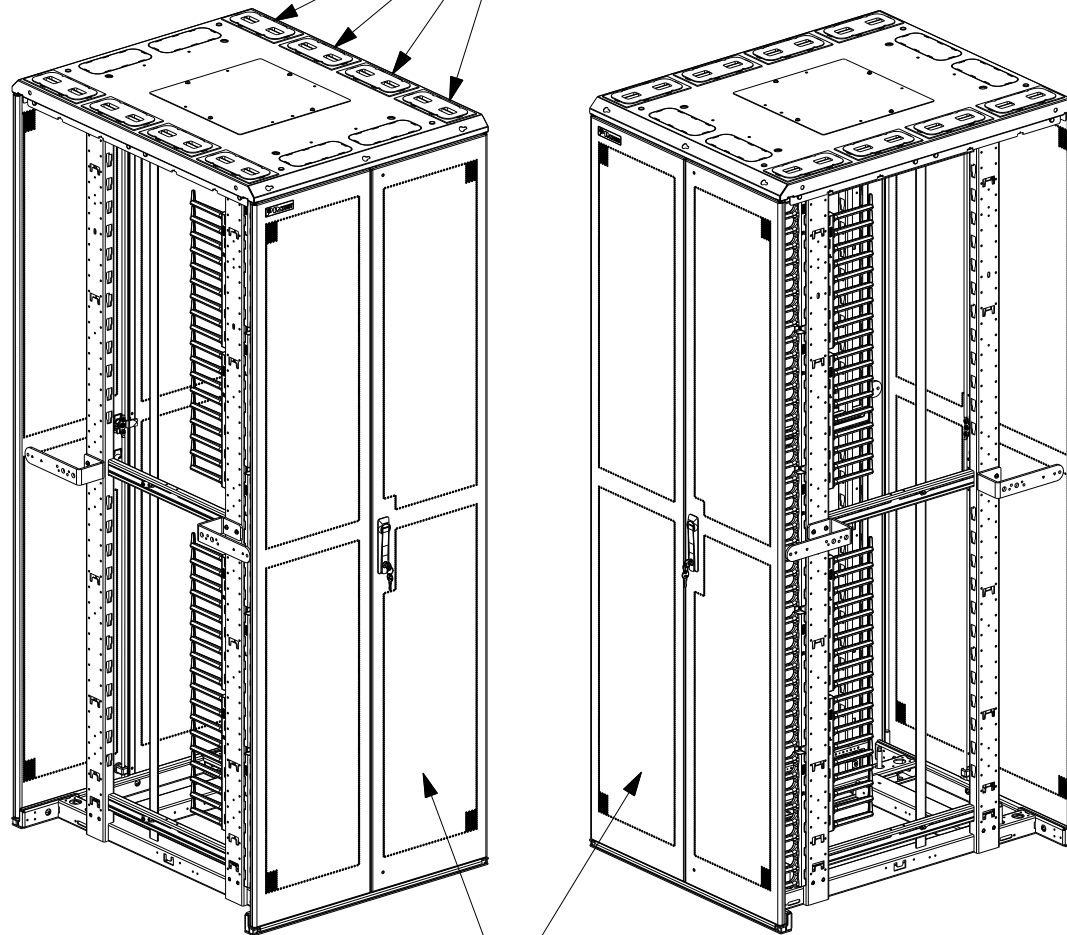


THIS COPY IS PROVIDED ON A RESTRICTED BASIS AND IS NOT TO BE USED IN ANY WAY DETRIMENTAL TO THE INTERESTS OF PANDUIT CORP.

(8) BEZELS AND COVERS ARE NOT INSTALLED (PART OF A KIT)



LEFT ISO

RIGHT ISO

SPLIT DOOR

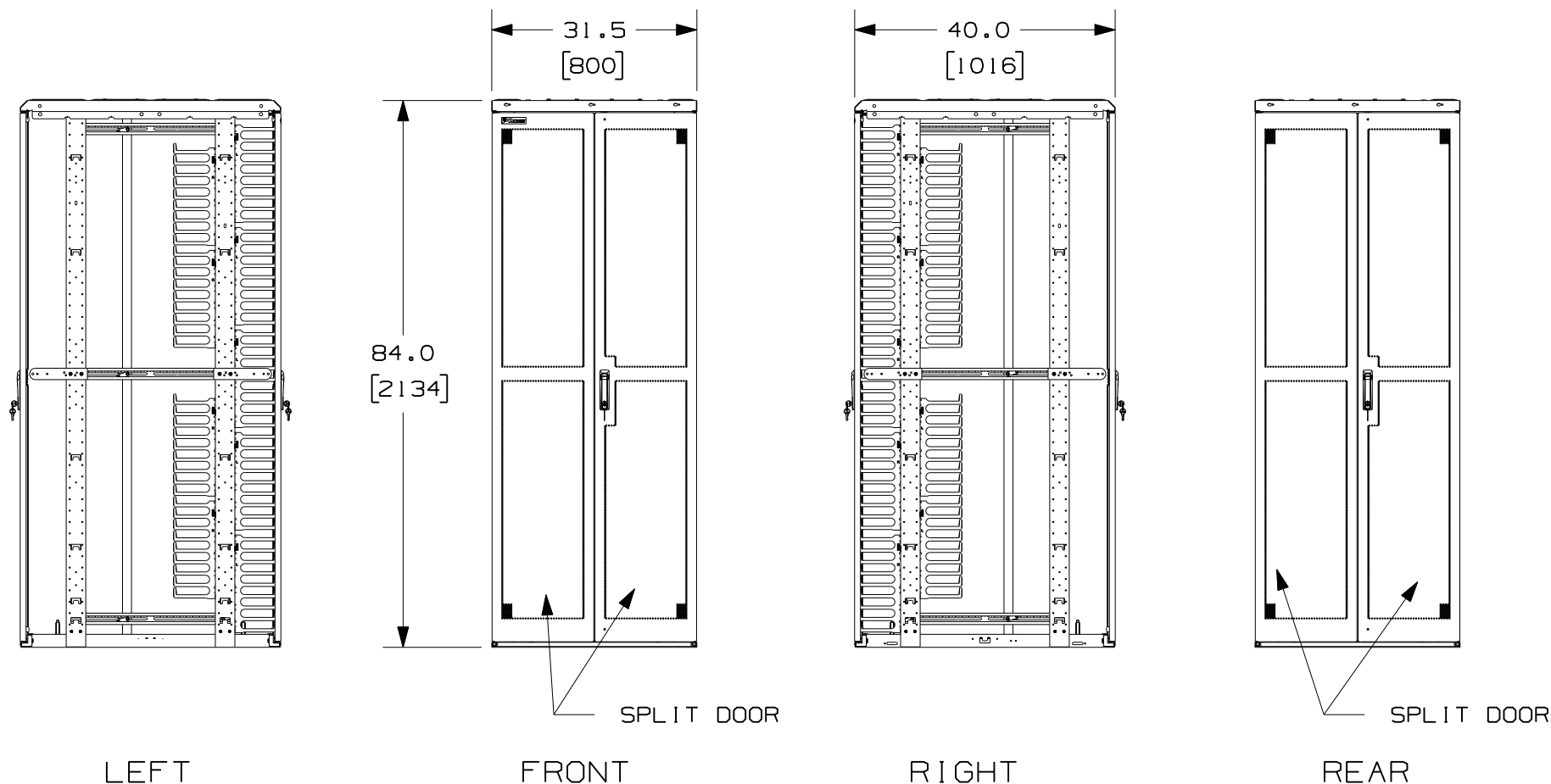
PANDUIT P/N	WEIGHT
CN5	281 LBS/EACH 127.5 Kg/EACH

- VISIT OUR ON-LINE CATALOG AT [WWW.PANDUIT.COM](http://WWW.PANDUIT.COM) FOR A LIST OF CURRENT PARTS APPLICABLE FOR USE WITH THIS PRODUCT.
- DIMENSIONS IN PARENTHESES ARE METRIC [mm].
- INDEPENDENT ADJUSTABLE FRONT & REAR EQUIPMENT MOUNTING RAILS (EIA) ADJUST FROM 2.9" TO 23.9" DEPTH.
- CAN BE USED WITH ANY 19" EIA STANDARD COMPONENT IN ADDITION TO ALL PANDUIT HORIZONTAL CABLE MANAGEMENT AND PATCH PANEL PRODUCTS.
- 45 AVAILABLE RACK SPACES.
- EIA UNIVERSAL STANDARD HOLE PROGRESSION ON EQUIPMENT RAILS .625", .625", .500", .625", .625", .500"...ETC
- PARTS SUPPLIED:
  - BASE CABINET
  - SETS OF SPLIT DOORS
    - SET OF FRONT & REAR #12-24 TAPPED RAILS
    - HARDWARE KIT
  - VERTICAL CABLE MANAGEMENT FINGER KITS
  - BEZELS & COVERS
  - INSTRUCTION SHEET
- RACK UNIT SPACING NUMERALS ARE CLEARLY PRINTED ON EQUIPMENT MOUNTING RAILS.
- FULLY BONDED STRUCTURE WHEN ASSEMBLED PER INSTRUCTIONS.
- LOAD RATING: 2500 LBS [1134 kg].
- SINGLE POINT GROUND LOCATIONS AT TOP AND BOTTOM OF CABINET.

MODEL FILENAME		V10395YD/03.PRT
CAD FILENAME/LAYERS		V10395YD_DC/03B.PRT
<p>PANDUIT CORP. TINLEY PARK, ILLINOIS</p>		
<p>CN5 CABINET CONFIGURATION CUSTOMER DRAWING</p>		
UNLESS OTHERWISE SPECIFIED, DIMENSIONAL TOLERANCES ARE: INCHES X.X +/- 0.06 X.XX +/- 0.03 X.XXX +/- 0.015 [METRIC - MILLIMETER] X +/- 1.5 X.X +/- 0.8 X.XX +/- 0.4 ANGLE +/- 1°		UNLESS OTHERWISE SPECIFIED, ALL DIMENSIONS ARE GIVEN IN INCHES, THIRD ANGLE PROJECTION.
DRAWN BY LEE	MAT'L:	SCALE NONE
DATE 1-31-07		DRAWING NO. 10395-57 SHEET 1 OF 4
CHK'D TKW		DWG A SIZE

03B	2-22-11	LEE	TKW	BEZELS & COVERS ADDED; SHEET 4 ADDED	10395-57	JWE			
03A	9-2-08	PIP	TKW	RELEASED TO PRODUCTION	10395-57				
00	1-31-07	LEE		DRAWING RELEASE					
REV	DATE	BY	CHK	DESCRIPTION	ECN	R	CUST	SUP	OTH

THIS COPY IS PROVIDED ON A RESTRICTED BASIS AND IS NOT TO BE USED IN ANY WAY DETRIMENTAL TO THE INTERESTS OF PANDUIT CORP.



MODEL FILENAME	V10395YD/03.PRT
CAD FILENAME/LAYERS	V10395YD_DC/03B.PRT
<b>PANDUIT</b> CORP. TINLEY PARK, ILLINOIS	
<b>CN5 CABINET CONFIGURATION CUSTOMER DRAWING</b>	

REV	DATE	BY	CHK	DESCRIPTION	ECN	R	CUST	SUP	OTH	UNLESS OTHERWISE SPECIFIED, DIMENSIONAL TOLERANCES ARE:	UNLESS OTHERWISE SPECIFIED, ALL DIMENSIONS ARE GIVEN IN INCHES, THIRD ANGLE PROJECTION.
03B	2-22-11	LEE	TKW	SEE SHEET 1 OF 4 FOR REVISIONS	10395-57		JDWE			INCHES X.X +/- 0.06 X.XX +/- 0.03 X.XXX +/- 0.015	[METRIC - MILLIMETER] X +/- 1.5 X.X +/- 0.8 X.XX +/- 0.4
03A	9-2-08	PIP	TKW	SEE SHEET 1 OF 3 FOR REVISIONS	10395-57					ANGLE +/- 1°	
00	1-31-07	LEE		SEE SHEET 1 OF 3 FOR REVISIONS	10395-57					DRAWN BY LEE	SCALE NONE
										DATE 1-31-07	DRAWING NO. 10395-57 SHEET 2 OF 4
										CHK'D TKW	DWG A SIZE

THIS COPY IS PROVIDED ON A RESTRICTED BASIS AND IS NOT TO BE USED IN ANY WAY DETRIMENTAL TO THE INTERESTS OF PANDUIT CORP.

REMOVABLE  
ACCESS COVER  
FOR 12" X 12"  
OPENING

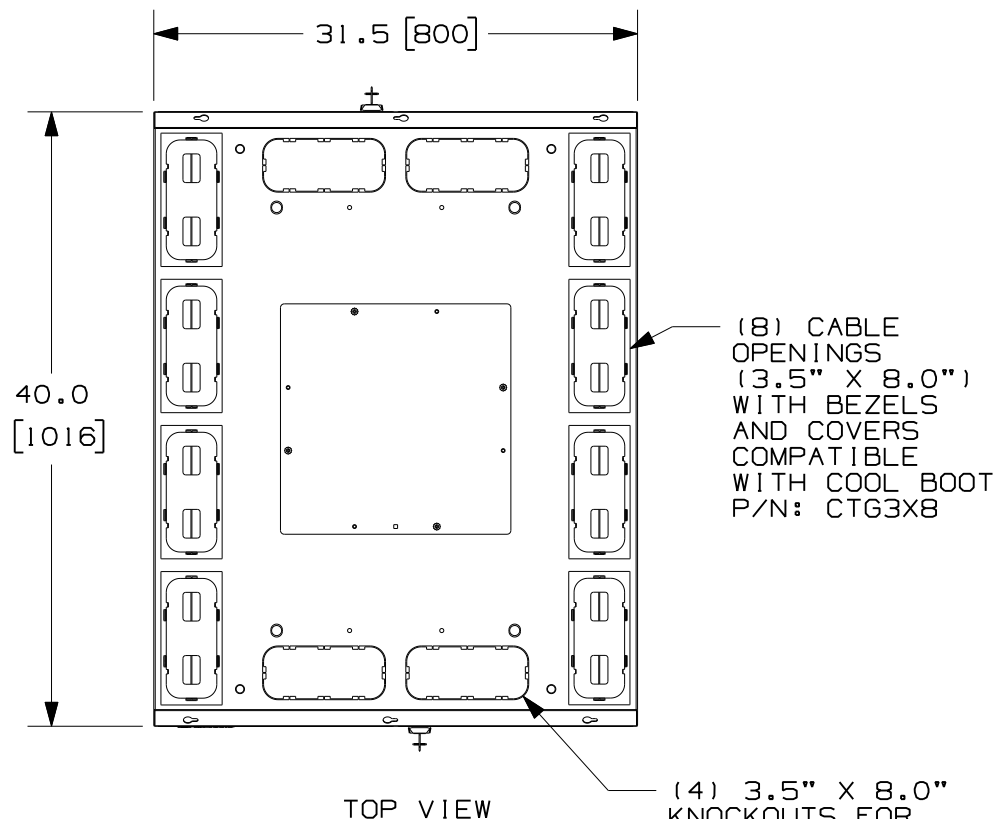
VERTICAL  
CABLE MANAGEMENT  
FINGERS WITH  
BEND RADIUS  
CONTROL

(4) #12-24 TAPPED  
EQUIPMENT RAILS  
ADJUSTABLE FROM  
2.9" TO 23.9" DEPTH

RACK UNITS ARE  
NUMBERED AND  
INDEXED FOR  
IDENTIFICATION

CROSS BEAMS ARE  
MARKED EVERY 1/2"  
FOR EQUIPMENT RAIL  
ALIGNMENT

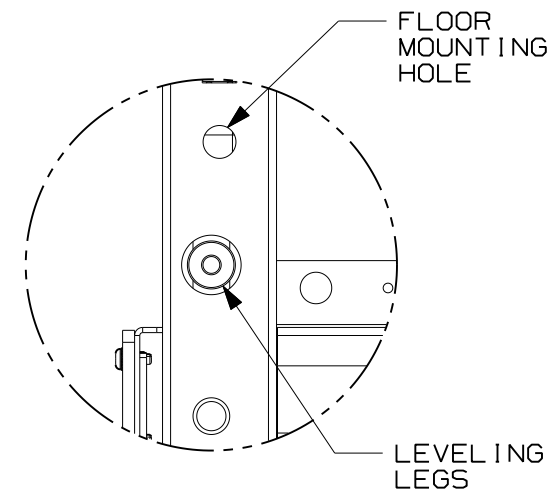
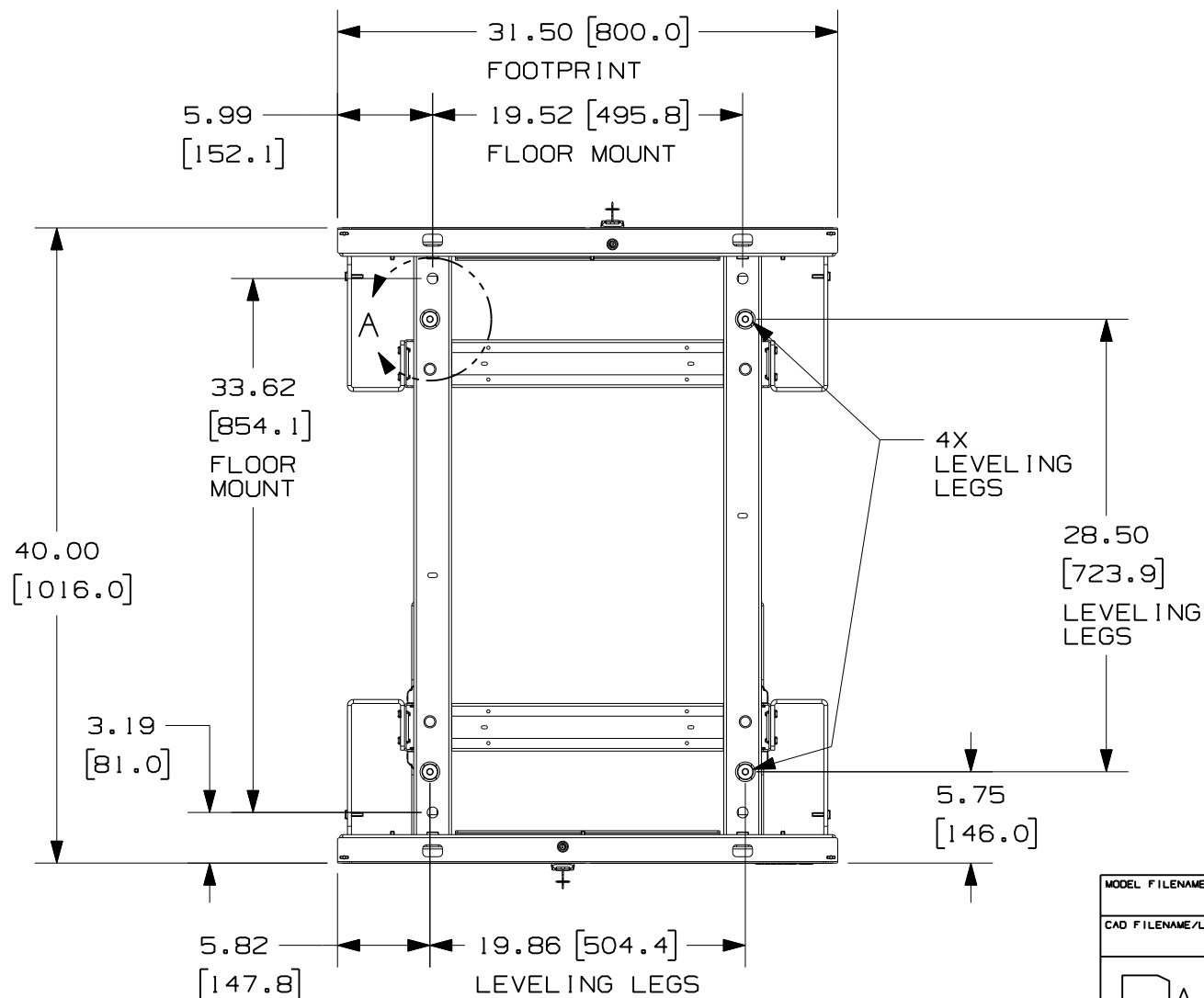
SPLIT DOOR  
NOT SHOWN



MODEL FILENAME	V10395YD/03.PRT
CAD FILENAME/LAYERS	V10395YD_DC/03B.PRT
PANDUIT CORP. TINLEY PARK, ILLINOIS	
CN5 CABINET CONFIGURATION CUSTOMER DRAWING	

						UNLESS OTHERWISE SPECIFIED, DIMENSIONAL TOLERANCES ARE:			UNLESS OTHERWISE SPECIFIED, ALL DIMENSIONS ARE GIVEN IN INCHES, THIRD ANGLE PROJECTION.	
						INCHES	[METRIC - MILLIMETER]	ANGLE		
						X.X +/- 0.06	X. +/- 1.5			
						X.XX +/- 0.03	X.X +/- 0.8	+/- 1°		
						X.XXX +/- 0.015	X.XX +/- 0.4			
03B	2-22-11	LEE	TKW	SEE SHEET 1 OF 4 FOR REVISIONS	10395-57	JDWE	DRAWN BY LEE		SCALE NONE	
03A	9-2-08	PIP	TKW	SEE SHEET 1 OF 3 FOR REVISIONS	10395-57		DATE 1-31-07		DRAWING NO. 10395-57	
00	1-31-07	LEE		SEE SHEET 1 OF 3 FOR REVISIONS			CHK'D TKW		SHEET 3 OF 4	
REV	DATE	BY	CHK	DESCRIPTION	ECN - R	CUST	SUP	OTH	DWG SIZE	A

THIS COPY IS PROVIDED ON A RESTRICTED BASIS AND IS NOT TO BE USED IN ANY WAY DETRIMENTAL TO THE INTERESTS OF PANDUIT CORP.



DETAIL A  
SCALE 1 : 4

FRONT OF CABINET  
BOTTOM VIEW

MODEL FILENAME	V10395YD/03.PRT
CAD FILENAME/LAYERS	V10395YD_DC/03B.PRT
PANDUIT CORP. TINLEY PARK, ILLINOIS	
CN5 CABINET CONFIGURATION CUSTOMER DRAWING	

REV	DATE	BY	CHK	DESCRIPTION	ECN	R	CUST	SUP	OTH	UNLESS OTHERWISE SPECIFIED, DIMENSIONAL TOLERANCES ARE: INCHES X.X +/- 0.06 X.XX +/- 0.03 X.XXX +/- 0.015 [METRIC - MILLIMETER] X. +/- 1.5 X.X +/- 0.8 X.XX +/- 0.4 ANGLE +/- 1°	UNLESS OTHERWISE SPECIFIED, ALL DIMENSIONS ARE GIVEN IN INCHES, THIRD ANGLE PROJECTION.
03B	2-22-11	LEE	TKW	SEE SHEET 1 OF 4 FOR REVISIONS	10395-57		JWE			DRAWN BY LEE	SCALE NONE
03A	9-2-08	PIP	TKW	SEE SHEET 1 OF 3 FOR REVISIONS	10395-57					DATE 1-31-07	DWG A SIZE
00	1-31-07	LEE		SEE SHEET 1 OF 3 FOR REVISIONS						CHK'D TKW	DRAWING NO. 10395-57 SHEET 4 OF 4