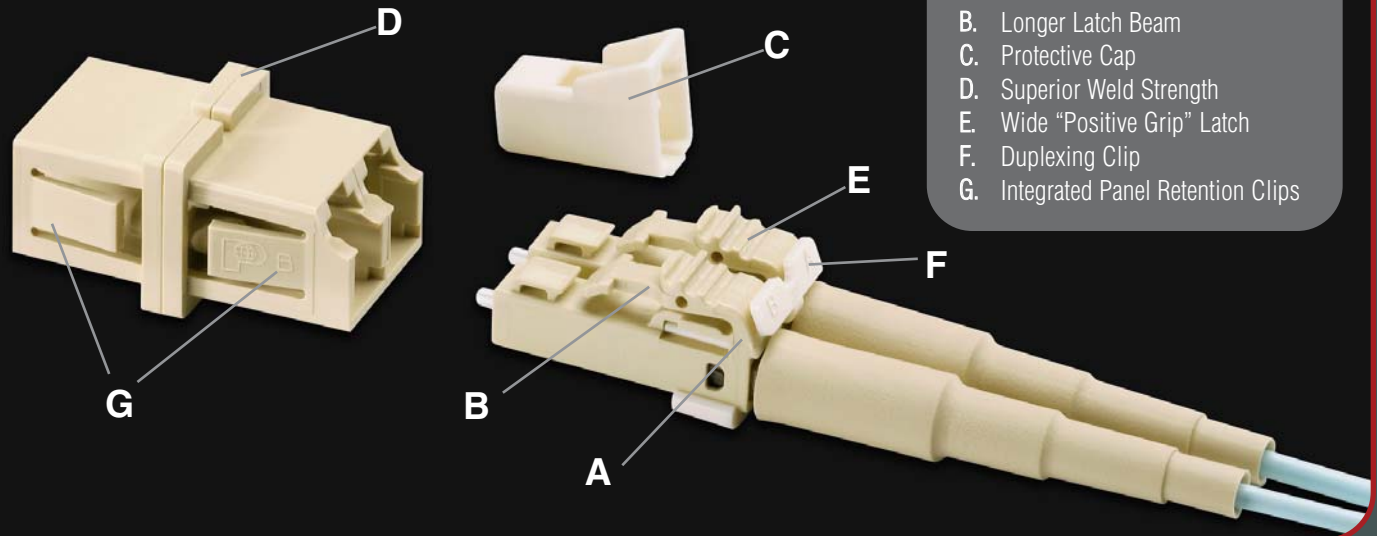




LC SYSTEM SOLUTION

Greater Durability for Longer Life

The Preferred Solution for Today's Demanding Fiber Optic Networks



- A. Rear Pivot Latch
- B. Longer Latch Beam
- C. Protective Cap
- D. Superior Weld Strength
- E. Wide "Positive Grip" Latch
- F. Duplexing Clip
- G. Integrated Panel Retention Clips

Quick, easy termination

Efficient anaerobic adhesive termination reduces installation time 50% compared to heat cured epoxy terminations

Snagless installation

Rear pivot latch (A) reduces potential snag area 80%

Superior latch cycle life

Longer latch beam (B) cycle life is 5 times the industry standard

Advanced ferrule end face protection

Load isolating, self-locking protective cap (C) protects against impact as well as contamination

Improved adapter reliability

Superior adapter weld strength (D) provides a more durable product under stress

Double connectivity density

Duplex LC adapters fit into simplex SC adapter panel openings

Easier access, better control during matings and unmatings

Wide "positive grip" finger latch (E) surface area is 250% larger than front pivot latch designs

Quick channel identification and polarity changes

Duplexing clip (F) with integrated polarity markers field installs without tools or re-termination

Improved adapter mounting

Integrated panel retention clips (G) eliminate lost or damaged metal clips

Snagless MACs

Low profile latch allows efficient moves, adds and changes

Assured connector mating

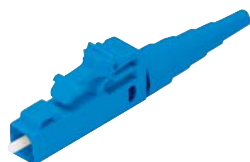
Audible "click" signals complete latching

Single connector design

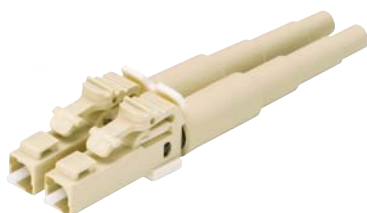
One body design is used for simplex and duplex patch cords, and for applications inside the wall

LC Fiber Optic Connectors

- FOCIS-10 TIA/EIA-568-B.3 compatible senior connectors
- Insertion loss: <0.10dB typical (multimode and singlemode)
- Return loss: >20dB (multimode), >40dB (singlemode)
- Fiber cable type: Tight-buffered recommended
- Fiber cable size: 1.6mm - 2.0mm jacketed cable (simplex and duplex) or 900µm buffered fiber (simplex only)
- Ferrule type: 1.25mm zirconia ceramic (highest durability for repeated matings)
- Non-optical disconnect maintains data transmission under tensile loads (jacketed cable only)
- Each simplex connector includes one connector body/ferrule assembly, one crimp sleeve, one boot for 900µm buffered fiber, one boot for 1.6mm - 2.0mm jacketed cable, and one dust cap
- Each duplex connector includes two connector body/ferrule assemblies, two crimp sleeves, two boots for 1.6mm - 2.0mm jacketed cable, two dust caps and one duplexing clip
- Field polish termination — *PANDUIT* recommends anaerobic adhesive
- Use LC Field Polish Termination Kit (FLPKIT)



FLCSSBU



FLCDMEI

Part Number	Part Description	Color	Std. Pkg. Qty.	Std. Ctn. Qty.
LC Simplex Fiber Optic Connectors				
FLCSMEI	LC multimode simplex fiber optic connector — 62.5/125µm or 50/125µm fiber.	Electric Ivory	1	10
FLCSSBU	LC singlemode simplex fiber optic connector.	Blue	1	10
LC Duplex Fiber Optic Connectors				
FLCDMEI	LC multimode duplex fiber optic connector — 62.5/125µm or 50/125µm fiber.	Electric Ivory	1	10
FLCDSBU	LC singlemode duplex fiber optic connector.	Blue	1	10

To comply with industry standards the connector housing and boots are blue for all singlemode connectors and electric ivory for all multimode connectors.

LC Fiber Optic Adapters

- FOCIS-10 TIA/EIA-568-B.3 compatible adapters
- Mini duplex adapter design fits into simplex SC adapter opening
- Choice of phosphor bronze or zirconia ceramic split sleeves to fit specific network requirements; zirconia ceramic split sleeves are required for singlemode applications



FADSLCEI-L



FASJLCZBU-L

Part Number	Part Description	Adapter Color	Std. Pkg. Qty.	Std. Ctn. Qty.
LC Sr./Sr. Fiber Optic Adapters				
FADSLCEI-L	LC Sr./Sr. mini duplex multimode fiber optic adapter with phosphor bronze split sleeves.	Electric Ivory	50	100
FADSLCZBU-L	LC Sr./Sr. mini duplex singlemode fiber optic adapter with zirconia ceramic split sleeves.	Blue	50	100
FASSLCZBU-L	LC Sr./Sr. simplex singlemode fiber optic adapter with zirconia ceramic split sleeve.	Blue	50	100
LC Sr./Jr. Fiber Optic Adapters				
FADJLCEI-L	LC Sr./Jr. mini duplex multimode fiber optic adapter with phosphor bronze split sleeves.	Electric Ivory	50	100
FADJLCZBU-L	LC Sr./Jr. mini duplex singlemode fiber optic adapter with zirconia ceramic split sleeves.	Blue	50	100
FASJLCZBU-L	LC Sr./Jr. simplex singlemode fiber optic adapter with zirconia ceramic split sleeve.	Blue	50	100

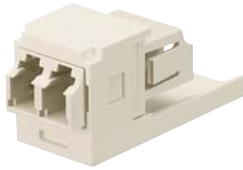
LC Sr./Sr. Fiber Optic Adapters have a FOCIS-10 senior adapter interface (without keyway) at each end. Both ends accept all FOCIS-10 compatible senior LC connectors (non-keyed; spring loaded ferrules). LC Sr./Sr. Adapters are typically used for patch panel and outlet applications, including behind the wall applications.

LC Sr./Jr. Fiber Optic Adapters have a FOCIS-10 senior adapter interface (without keyway) at one end, and a FOCIS-10 junior adapter interface (with keyway) at the other end. Both ends accept all FOCIS-10 compatible senior LC connectors (non-keyed; spring loaded ferrules). LC Sr./Jr. Fiber Optic Adapters provide greater flexibility because the junior end also accepts FOCIS-10 compatible junior LC connectors (keyed; fixed ferrule/springless). The shorter profile of the junior end accommodates tighter applications behind the wall, allowing easier access to FOCIS-10 compatible junior (shorter) LC connectors terminated on 900µm buffered fiber.

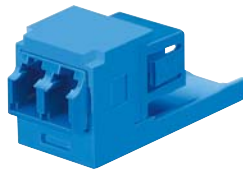
MINI-COM® LC Fiber Optic Adapter Modules

- FOCIS-10 TIA/EIA-568-B.3 compatible adapters
- Mini duplex adapter design fits into single module space
- Compatible with *MINI-COM*® products for complete modularity
- LC Sr./Sr. or Sr./Jr. Fiber Optic Adapters are provided to fit application requirements (refer to description on the bottom of page 3)

- Choice of phosphor bronze or zirconia ceramic split sleeves to fit specific network requirements; zirconia ceramic split sleeves are required for singlemode applications
- Commonly used with *MINI-COM*® Faceplates, Surface Mount Boxes and Patch Panels



CMDSLC



CMDJLCZ

Part Number	Part Description	No. of Module Spaces	Module Color‡	Std. Pkg. Qty.	Std. Ctn. Qty.
LC Sr./Sr. Fiber Optic Adapter Modules					
CMDSLCEI	Module supplied with one LC Sr./Sr. mini duplex multimode fiber optic adapter with phosphor bronze split sleeves.	1	Electric Ivory	1	10
CMDSLCZBU	Module supplied with one LC Sr./Sr. mini duplex singlemode fiber optic adapter with zirconia ceramic split sleeves.	1	Blue	1	10
LC Sr./Jr. Fiber Optic Adapter Modules					
CMDJLCEI	Module supplied with one LC Sr./Jr. mini duplex multimode fiber optic adapter with phosphor bronze split sleeves.	1	Electric Ivory	1	10
CMDJLCZBU	Module supplied with one LC Sr./Jr. mini duplex singlemode fiber optic adapter with zirconia ceramic split sleeves.	1	Blue	1	10

‡For other colors, replace suffix EI (Electric Ivory) or BU (Blue) with AW (Arctic White), BL (Black), EW (European White), IG (International Gray), IW (Off White), TG (Technical Gray) or WH (White).

OPTICOM® LC Fiber Adapter Panels

- Snap quickly into the front of all *OPTICOM*® Fiber Optic Enclosures
- LC Sr./Jr. Fiber Optic Adapters are provided for greater flexibility (refer to description on the bottom of page 3)

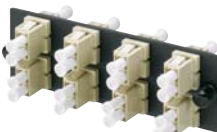
- Choice of phosphor bronze or zirconia ceramic split sleeves to fit specific network requirements; zirconia ceramic split sleeves are required for singlemode applications



FAP12WBULCZ



FAP6WEIDLC



FAP8WEIDLC



FAP12WEIDLC

Part Number	Part Description	Std. Pkg. Qty.	Std. Ctn. Qty.
LC Simplex Fiber Adapter Panels			
FAP12WBULCZ	Loaded with 12 LC Sr./Jr. simplex singlemode fiber optic adapters (blue) with zirconia ceramic split sleeves.	1	10
LC Duplex Fiber Adapter Panels			
FAP6WEIDLC	Loaded with 6 LC Sr./Jr. mini duplex multimode fiber optic adapters (electric ivory) with phosphor bronze split sleeves.	1	10
FAP6WBUDLCZ	Loaded with 6 LC Sr./Jr. mini duplex singlemode fiber optic adapters (blue) with zirconia ceramic split sleeves.	1	10
FAP8WEIDLC	Loaded with 8 LC Sr./Jr. mini duplex multimode fiber optic adapters (electric ivory) with phosphor bronze split sleeves.	1	10
FAP8WBUDLCZ	Loaded with 8 LC Sr./Jr. mini duplex singlemode fiber optic adapters (blue) with zirconia ceramic split sleeves.	1	10
FAP12WEIDLC	Loaded with 12 LC Sr./Jr. mini duplex multimode fiber optic adapters (electric ivory) with phosphor bronze split sleeves.	1	10
FAP12WBUDLCZ	Loaded with 12 LC Sr./Jr. mini duplex singlemode fiber optic adapters (blue) with zirconia ceramic split sleeves.	1	10

Order number of pieces required, in multiples of Standard Package Quantity.

LC Field Polish Fiber Optic Termination Kit

- For *PANDUIT* LC (1.25mm ferrule) field polish connector termination
- Fast acting adhesive
- Kit provides consumables for terminating up to 100 field polish connectors
- Includes non-consumable and consumable components
- Also includes stripping template for *PANDUIT* LC field polish connectors



FLPKIT

Part Number	Part Description	Std. Pkg. Qty.	Std. Ctn. Qty.
FLPKIT	Non-consumables and consumables necessary for termination of LC (1.25mm ferrules) field polish LC multimode and singlemode connectors; includes FSHCT Heat Shrink Curing Tool — 110V, 60Hz.	1	—
FLPKIT-W	Non-consumables and consumables necessary for termination of LC (1.25mm ferrules) field polish LC multimode and singlemode connectors; includes FSHCT-W Heat Shrink Curing Tool — 230V, 50Hz.	1	—

Components for LC Field Polish Fiber Optic Termination Kit (FLPKIT)

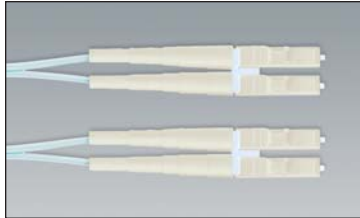
Part Number	Part Description	Std. Pkg. Qty.	Std. Ctn. Qty.
Non-Consumables			
CST115	Fiber cable jacket stripper	1	—
FALC	Alcohol bottle	1	10
FBFSP	Fiber buffer stripper	1	10
FBFSPM	Miller fiber buffer stripper	1	10
FLPT	LC crimp tool	1	—
FHSCT	Heat shrink curing tool - 110V, 60Hz	1	—
FHSCT-W	Heat shrink curing tool - 230V, 50Hz	1	—
FKS	Fiber Kevlar Shears	1	10
FSCRIBE	Carbide scribe	1	10
FSCRBLD	Replacement blade for carbide scribe	1	10
FGLS	Safety glasses	1	10
FLCPAD	Polishing pad and plate (85 durometer)	1	10
FLCPK	LC polishing puck (1.25mm ferrule)	1	—
FSCDVR	Screwdriver	1	50
FSCOPE	Fiber inspection microscope (200X)	1	—
FLCASC	1.25mm adapter for FSCOPE	1	—
FTWZR	Tweezers	1	10
FWBTL	Water bottle	1	10
FPWIRE	Piano wire	1	10
FWRKMAT	Fiber safe workmat	1	10
Consumables			
FJPMR	Primer (50ml)	1	10
FJPXY	Anaerobic adhesive (10ml)	1	10
FPP5-L	5µm polishing paper (AL ₂ O ₃)	50	250
PPF1-V	Polishing film - 1µm diamond	5	50
FLCFPLF-X	0.05µm lapping film	10	—
FSWB-C	Cleaning swabs	100	1000
FST	Safety stickers for fiber scraps	1	10
FSYR-X	Syringes with needle tips	10	50
FWP-C	Cloth wipes	100	1000
PFX-0‡	Permanent Marking Pen, Fine Tip	12	144

^Not included in FLPKIT (may be ordered separately).

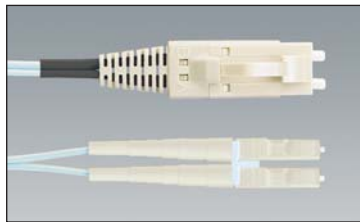
‡Only one piece included in FLPKIT.

LC Multimode Fiber Optic Patch Cords and Pigtails

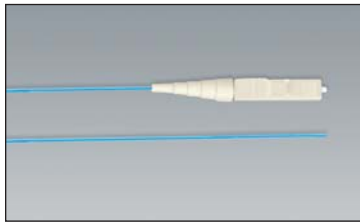
- *OPTI-CORE™ 10GIG™ 50/125µm* patch cords support network transmission speeds up to 10 Gigabits per second for link lengths up to 300 meters with an 850nm source per IEEE 802.3ae 10GbE Standards
- Designed and tested to pass all TIA/EIA-568-B.3 performance requirements
- Insertion loss per connection: .10dB typical; .30dB maximum
- 100% factory tested for insertion loss
- Insertion loss data recorded for every multimode patch cord
- Lifetime traceability of test data to a Q.C. number on each patch cord
- Highest quality flame retardant fiber optic cable with tight-buffered coating on each optical fiber



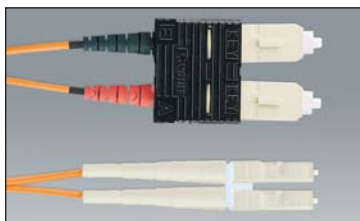
FXE10-10M



FXE6P-10M



F5B10-NM1



F6E3-10M

Part Number	Part Description	Length (M) Additional Lengths [^]	Std. Pkg. Qty.	Std. Ctn. Qty.
OPTI-CORE™ 10GIG™ 50/125µm Patch Cords and Pigtails (OM3 Fiber)				
FXE10-10M1	LC to LC multimode duplex patch cord, 10GbE, 1.6mm jacketed cable — 50/125µm (OM3).	1	1	10
FXB10-NM1	LC to pigtail multimode simplex pigtail, 10GbE, 900µm buffered fiber — 50/125µm (OM3).	1	1	10
FXE3-10M1	SC to LC multimode duplex patch cord, 10GbE, 1.6mm jacketed cable — 50/125µm (OM3).	1	1	10
FXE6P-10M1	FJ® to LC multimode duplex patch cord, 10GbE, 1.6mm jacketed cable — 50/125µm (OM3).	1	1	10

50/125µm Patch Cords and Pigtails (OM2 Fiber)

F5E10-10M1	LC to LC multimode duplex patch cord, 1.6mm jacketed cable — 50/125µm (OM2).	1	1	10
F5B10-NM1	LC to pigtail multimode simplex pigtail, 900µm buffered fiber — 50/125µm (OM2).	1	1	10
F5E3-10M1	SC to LC multimode duplex patch cord, 1.6mm jacketed cable — 50/125µm (OM2).	1	1	10
F5E6P-10M1	FJ® to LC multimode duplex patch cord, 1.6mm jacketed cable — 50/125µm (OM2).	1	1	10

62.5/125µm Patch Cords and Pigtails (OM1 Fiber)

F6E10-10M1	LC to LC multimode duplex patch cord, 1.6mm jacketed cable — 62.5/125µm (OM1).	1	1	10
F6B10-NM1	LC to pigtail multimode simplex pigtail, 900µm buffered fiber — 62.5/125µm (OM1).	1	1	10
F6E3-10M1	SC to LC multimode duplex patch cord, 1.6mm jacketed cable — 62.5/125µm (OM1).	1	1	10
F6E6P-10M1	FJ® to LC multimode duplex patch cord, 1.6mm jacketed cable — 62.5/125µm (OM1).	1	1	10

[^]**Additional lengths and availability:** Patch cords are available in 1, 2, 3, 5 and 10 meter lengths, and pigtails are available in 1, 2 and 3 meter lengths. To order lengths other than 1 meter, substitute the 1 suffix in the part number (FXE10-10M1) with the desired length (FXE10-10M2 for 2 meter length). Patch cords in 1, 2 and 3 meter lengths, and pigtails in 1 meter lengths are stock items. For patch cords in 5 and 10 meter lengths, and pigtails in 2 and 3 meter lengths, contact Customer Service (800-777-3300) for actual lead times.

Self-Laminating Labels for LC Multimode Fiber Optic Patch Cords and Pigtails

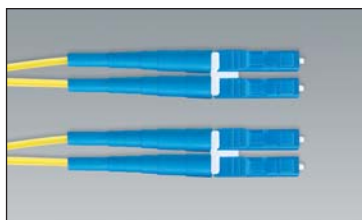
Suggested Label Solutions for TIA/EIA-606-A Compliance			
Patch Cord Part Number	Laser/Ink Jet Desktop Printer Label	VIPER™ LS6 Portable Printer Label	PANACEA® LS7 Hand-Held Printer Label
F*E10-10M	S100X225FAJ and NWSLC-7	S100X225FA6 and NWSLC-7	LS7-75NL-1 and NWSLC-7
F*E3-10M			
F*E6P-10M			

*All part number configurations on this page.

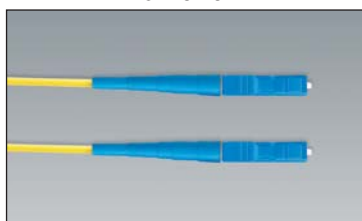
Order number of pieces required, in multiples of Standard Package Quantity.

LC Singlemode Fiber Optic Patch Cords and Pigtails (OS1 Fiber)

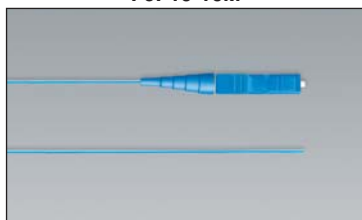
- Passes all TIA/EIA-568-B.3 performance requirements
- 100% factory inspected end face geometry in compliance with Telcordia GR-326-CORE, Issue 3
- Typical insertion loss per connection: .25dB
- UPC polished (55dB minimum return loss)
- 100% factory tested and inspected for insertion loss and return loss
- Insertion loss and return loss data recorded for every singlemode patch cord
- Lifetime traceability of test data to a Q.C. number on each patch cord
- Highest quality flame retardant fiber optic cable with tight-buffered coating on each optical fiber



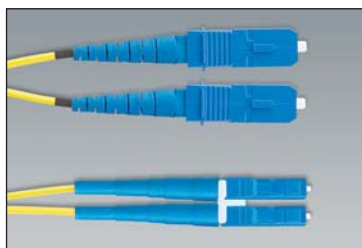
F9E10-10M



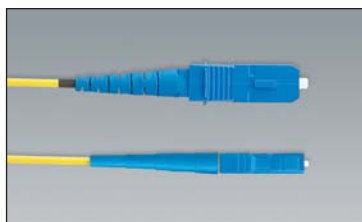
F9F10-10M



F9B10-NM



F9E3-10M



F9F3-10M



F9E6P-10M

Part Number	Part Description	Length (M) Additional Lengths [^]	Std. Pkg. Qty.	Std. Ctn. Qty.
LC to LC — Singlemode Duplex Patch Cords — 1.6mm Jacketed Cable				
F9E10-10M1	LC to LC singlemode duplex patch cord, 1.6mm jacketed cable — 9/125µm.	1	1	10
LC to LC — Singlemode Simplex Patch Cords — 1.6mm Jacketed Cable				
F9F10-10M1	LC to LC singlemode simplex patch cord, 1.6mm jacketed cable — 9/125µm.	1	1	10
LC to Pigtail — Singlemode Simplex Pigtails — 900µm Buffered Fiber				
F9B10-NM1	LC to pigtail singlemode simplex pigtail, 900µm buffered fiber) — 9/125µm.	1	1	10
SC to LC — Singlemode Duplex Patch Cords — 1.6mm Jacketed Cable				
F9E3-10M1	SC to LC singlemode duplex patch cord, 1.6mm jacketed cable — 9/125µm.	1	1	10
SC to LC — Singlemode Simplex Patch Cords — 1.6mm Jacketed Cable				
F9F3-10M1	SC to LC singlemode simplex patch cord, 1.6mm jacketed cable — 9/125µm.	1	1	10
FJ[®] Plug to LC — Singlemode Duplex Patch Cords — 1.6mm Jacketed Cable				
F9E6P-10M1	FJ [®] plug to LC singlemode duplex patch cord, 1.6mm jacketed cable — 9/125µm.	1	1	10

[^]Additional lengths and availability: Patch cords are available in 1, 2, 3, 5, 10, 12, 15, 25 and 30 meter lengths, and pigtails are available in 1, 2 and 3 meter lengths. To order lengths other than 1 meter, substitute the 1 suffix in the part number (F9E10-10M1) with the desired length (F9E10-10M2 for 2 meter length). Patch cords in 1, 2 and 3 meter lengths, and pigtails in 1 meter lengths are stock items. For patch cords in 5, 10, 12, 15, 25 and 30 meter lengths, and pigtails in 2 and 3 meter lengths, contact Customer Service (800-777-3300) for actual lead times.

Self-Laminating Labels for LC Singlemode Fiber Optic Patch Cords and Pigtails

Suggested Label Solutions for TIA/EIA-606-A Compliance			
Patch Cord Part Number	Laser/Ink Jet Desktop Printer Label	VIPER™ LS6 Portable Printer Label	PANACEA® LS7 Hand-Held Printer Label
F9E10-10M	S100X225FAJ and NWSLC-7	S100X225FAJ and NWSLC-7	LS7-75NL-1 and NWSLC-7
F9E3-10M			
F9E6P-10M			
F9F10-10M	S100X160FAJ and NWSLC-2	S100X160FAJ and NWSLC-2	LS7-75NL-1 and NWSLC-2
F9F3-10M			



PANDUIT Corp.
Tinley Park, Illinois 60477-3091

For more information or to request a catalog

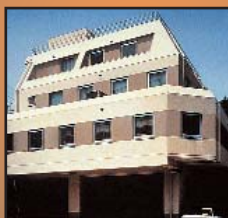
www.panduit.com

cs@panduit.com

800-777-3300



PANDUIT Europe Ltd.
London, UK
Phone: 44.208.601.7200



PANDUIT Japan
Tokyo, Japan
Phone: 81.3.3767.7011



PANDUIT Asia Pacific Pte. Ltd.
Republic of Singapore
Phone: 65.6379.6700



PANDUIT Latin America
Jalisco, Mexico
Phone: 52.333.666.2501



PANDUIT Australia Pty. Ltd.
Victoria, Australia
Phone: 61.3.9794.9020



PANDUIT Canada
Markham, Ontario
Phone: 800.777.3300

WORLDWIDE SUBSIDIARIES AND SALES OFFICES

For a copy of *PANDUIT* product warranties, log on to www.panduit.com/warranty