

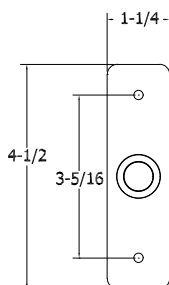


CIB2
Single-Gang, Call-In Switch,
Stainless Steel, Vandal Resistant

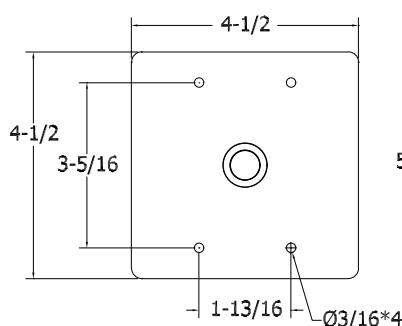
CIB6
Two-Gang, Call-In Switch,
Stainless Steel, Vandal Resistant

CIB8
Door Mullion, Call-In Switch,
Stainless Steel, Vandal Resistant

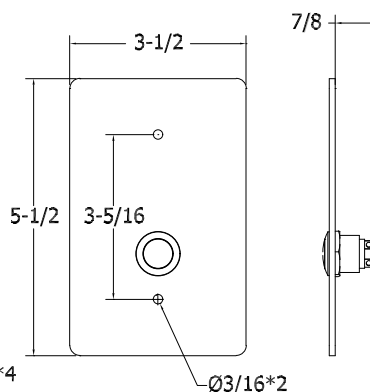
0603- VANDAL RESISTANT COMPONENTS



CIB8 Shown



CIB6 Shown



CIB2 Shown



GENERAL DESCRIPTION

The Quam CIB2 is a single-gang, vandal-resistant call-in switch with momentary, normally open, push-to-call button.

The Quam CIB6 is a two-gang, vandal-resistant call-in switch with momentary, normally open, push-to-call button.

The Quam CIB8 is a door mullion vandal-resistant call-in switch, with momentary, normally open, push-to-call button.

The faceplate is 12 gage, brushed stainless steel with tamper-resistant, #6-32 'pin-in-torx' hardware.

Optional at additional cost:

Red mushroom button— Order as: CIBx-MB

Engrave and fill is available at time of order. Contact the Factory for details and lead times.

INTENDED USE

Indoor or outdoor environment.

SWITCH CONNECTION

Screw-down pinch connector

Recommended construction sequences, installation instructions and A&E Specifications are available in various formats on the Quam Architects' and Engineers' Resources CD or on the web at: www.quamspeakers.com

Quam-Nichols Company

234 East Marquette Road, Chicago, IL 60637
Phone: (800) NEED NOW Fax: (888) NEED NOW
(800) 633 - 3669 (888) 633 - 3669
E-Mail: neednow@qnc.com www.quamspeakers.com

© 2011 Quam-Nichols Company Quam-Nichols reserves the right to make changes and/or improvements to its products at any time and without notice



TCIB2_CIB6_CIB8_11OC17

CORRECTION / DETENTION

06