



MaxCell: Installation Instructions

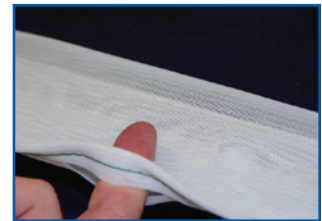
When installing MaxCell®, two requirements are very important:

- A swivel must always be used
- The factory installed 1250 lb pull tapes must free-float during installation.

Installation Instructions for Single-Packs

Step 1

Make a 2" incision through the MaxCell, 18" from the end. This incision should be parallel to the product and made 1/2 inch from the colored stitch edge of the product.



Step 1

Step 2

Pull out all pull tapes through this incision and cut off excess. Push remaining ends of pull tape back into the cells. The tapes must be pushed back far enough into cells, so that they free float during installation.



Step 2

Step 3

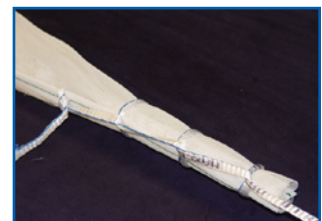
Tie a 6-foot piece of pull tape or rope through incision. Secure with non-slip knot.



Step 3

Step 4

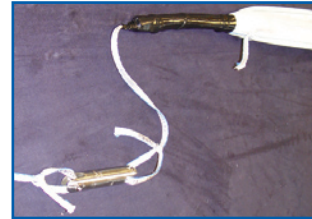
With the tied on pull tape or rope, create 3 to 4 half-hitch knots down to the end of the MaxCell. The longer the pull, the more half-hitch knots are recommended. Under tension, tighten the half-hitch knots in succession, beginning with closest to the incision. Apply black vinyl tape over last two half-hitch knots and end of Maxcell.



Step 4

Step 5

Tie the end of the exposed pull tape to a swivel using a non-slip knot. Tie the end of the pull tape or rope from the conduit to other end of the swivel.



Step 5

Step 6

Begin pulling MaxCell into the conduit. To further ensure the MaxCell does not spiral during installation, hand guide the MaxCell into the conduit opening, and maintain the angle and face of the MaxCell pack throughout duration of installation

Installation Instructions for Multiple Packs

Step 7

Repeat steps 1 and 2 above for as many individual MaxCell “packs” being installed.

Step 8

Tie a 6-foot piece of pull tape or rope to all MaxCell sleeves, and create your 3-4 half hitch knots around all the sleeves at one time. All tapes should be free floating.

Note: It is recommended that the center MaxCell sleeve in a 3-way pull be aligned 1/2 turn coming off the reel so that the color stitching is opposite the top 1/2 bottom sleeve.

Step 9

Begin pulling the MaxCell packs in. For best results, hand feed the packs into the conduit, keeping them together and faced the same way through the entire pull.

