



PREFORMED LINE PRODUCTS

Section 3 – FIBERLIGN® Closure Series

Table of Contents	Page
FIBERLIGN Splice Trays	3-2
FIBERLIGN Organizers	3-3
FIBERLIGN UNI-CLOSURE	3-8
FIBERLIGN Fiber Safe	3-11



FIBERLIGN® Splice Trays

Splice Trays for PREFORMED™ Splice Cases

FIBERLIGN Fiber Optic Splice Trays are suitable for use in all PLP® Splice Cases and splicing applications. The storage trays provide ample room for storing fiber and allow for a generous bend radius designed to assure long term optical performance. There are now two types of trays offered. The standard thermal-formed tray is available for all closures and splice applications. The ADOBE™ Splice Tray is available as a lower cost alternative and is interchangeable with many of the thermal-formed trays. Both versions of the splice tray include a clear snap-on cover, felt tape for protecting buffer tubes, and tie wraps to secure the buffer or transport tubes to the tray. To find splice trays for a specific closure and specific splicing application, refer to the desired closure section of the catalog.



Standard Thermal-Formed Splice Tray

The standard thermal-formed tray is lined with felt to cushion optical fibers and provide a contrasting background for splicing colored fibers.



ADOBE™ Splice Tray

The ADOBE Splice Tray is an injection-molded tray which comes without the felt lining.

FIBERLIGN® Organizers

For Fusion Splices (Protected and Unprotected) and Mechanical Splices

FIBERLIGN Fiber Optic Organizers are designed to help organize, secure, support and protect delicate optical fibers before, during and after splicing. There are splice tray organizers to fit all of PLP's Splice Cases ranging from the 4.0" x 25.8" (102 x 655 mm) to the 9.5" x 38.4" (241 x 975 mm).

The FIBERLIGN Fiber Optic Organizers consist of a mainframe assembly, into which are inserted splice trays, each consisting of a splice tray and a snap-on clear cover. A grooved splice block on the tray holds and cushions the splices.

The splice trays are designed to accept most types of single, mass mechanical or mass fusion splices.

Features:

- An all-dielectric method to organize, secure, store and protect delicate optic fibers
- Individual trays can be removed to facilitate splicing
- Large excess buffer storage area
- Substantial cost savings

Use the selection chart below to choose the Splice Case and splice tray organizer which meet the requirements for your application.

Splice Case Dimensions (mm)	4.0" x 25.8" (102 x 655)	6.5" x 22.0" (165 x 559)	6.5" x 28.4" (165 x 721)	6.5" x 28.4" (165 x 721) or 8.0" x 28.4" (203 x 721)	6.5" x 28.4" (165 x 721) or 8.0" x 28.4" (203 x 721)	6.5" x 38.4" (165 x 965) or 8.0" x 38.4" (203 x 965)	9.5" x 28.4" (241 x 721) or 12.5" x 28.4" (318 x 721)	9.5" x 38.4" (241 x 965) or 12.5" x 38.4" (318 x 965)
Splice Tray Capacity	3	6	8	6	8	8	16	16
Organizer Capacity = Splice Tray Capacity x Number of Splices/Tray	36	72	96 (144)*	72 (108)*	96 (144)*	192	192 (288)*	384
Organizer Tray Arrangement	8000193 Horizontal	8001072 Vertical	8000185 Horizontal	8001025 Vertical	8001059 Vertical	8001036 Vertical	8001043 Vertical	8001049 Vertical

*Maximum splice capacity for 18 count splice trays or mass fusion trays.

FIBERLIGN Splice Trays come in various sizes and types to accommodate all of the different PLP Splice Cases and splicing applications being used. The storage trays provide ample room for storing fiber and allow for a generous bend radius designed to assure long term optical performance. There are now two types of trays offered. The standard thermal-formed tray is available for all closures and splice applications. The ADOBE™ Splice Tray is available as a

lower cost alternative and is interchangeable with many of the thermal-formed trays. Both versions come with a clear snap on cover, felt tape for protecting buffer tubes, and tie wraps to secure the buffer tubes to the tray.

The following pages describe the specific splice trays for the mainframe and closure you have selected.



FIBERLIGN® Organizers

Catalog #8000193



Horizontal organizer for 4.0" x 25.8" (102 x 655 mm) Splice Case. Accommodates up to three splice trays.

Catalog #8001072



Vertical organizer for 6.5" x 22.0" (165 x 559 mm) Splice Case. Accommodates up to six splice trays.

Catalog Number	Splice Type for:	No. of Splice Trays	Splice Tray Capacity	
8000192	Protected Fusion Amp Optimate Norland	3	12	S
8000182	Unprotected Fusion	3	12	S
8001050	3M Fibrlok Amp FingerSplice Siecor CamSplice Northern Telecom Lightbridge	3	12	S
—	Protected Mass Fusion Splice	—	—	—
—	3M Mass Connector	—	—	—
—	Reliance Corelink	—	—	—

Catalog Number	Splice Type for:	No. of Splice Trays	Splice Tray Capacity	
8001071	Protected Fusion Amp Optimate Norland	6	12	S
—	Unprotected Fusion	—	—	—
8001082	3M Fibrlok Amp FingerSplice Siecor CamSplice Northern Telecom Lightbridge	6	12	S
—	Protected Mass Fusion Splice	—	—	—
—	3M Mass Connector	—	—	—
—	Reliance Corelink	—	—	—

(S) signifies a standard size thermal-formed splice tray

FIBERLIGN® Organizers

Catalog #8000185



Horizontal stacking organizer for 6.5" x 28.4" (165 x 721 mm) Splice Case. Accommodates up to eight splice trays unless otherwise noted.

Catalog #8001025



Vertical organizer for 6.5" x 28.4" (165 x 724 mm) or 8.0" x 28.4" (203 x 721 mm) Splice Case. Accommodates up to six splice trays.

Catalog Number	Splice Type for:	No. of Splice Trays	Splice Tray Capacity	
8000184	Protected Fusion Amp Optimate Norland	8	12	W
8001021		8	12	S
8001044		8	18	S
8001095		8	18	A,W
8001096		8	18	A
8000182	Unprotected Fusion	8	12	S
8001024		8	12	S
8001042	3M Fibrlok Amp FingerSplice Siecor CamSplice Northern Telecom Lightbridge	8	12	W
8001041		8	12	S
8001099		8	12	A,W
8001098		8	12	A
8001085	Protected Mass Fusion Splice	8	48	S
8001091	Reliance Corelink	8	12	S

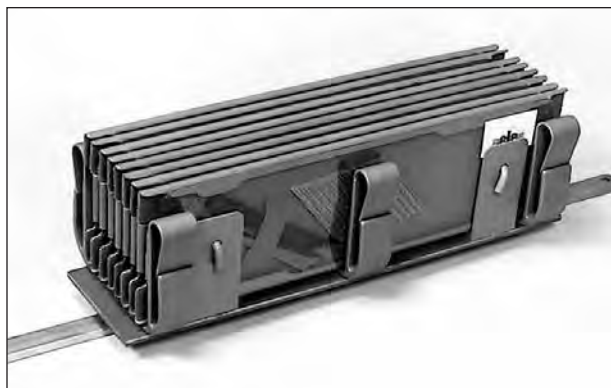
Catalog Number	Splice Type for:	No. of Splice Trays	Splice Tray Capacity	
8001095	Protected Fusion Amp Optimate Norland	6	12	S
8000184		6	12	W
8001095	Unprotected Fusion	6	18	A,W
8000182	3M Fibrlok Amp FingerSplice Siecor CamSplice Northern Telecom Lightbridge	6	12	S
8001042		6	12	W
8001099	Protected Mass Fusion Splice	6	12	A,W
—	3M Mass Connector	—	—	—
—	Reliance Corelink	—	—	—

- (A) Signifies an ADOBE™ Splice Tray
 (S) Signifies a standard size thermal-formed splice tray
 (W) Signifies a wide thermal-formed splice tray, 13" long x 4¾" wide (330 x 121 mm), instead of the standard 13" long x 3¹⁵⁄₁₆" wide (330 x 100 mm)



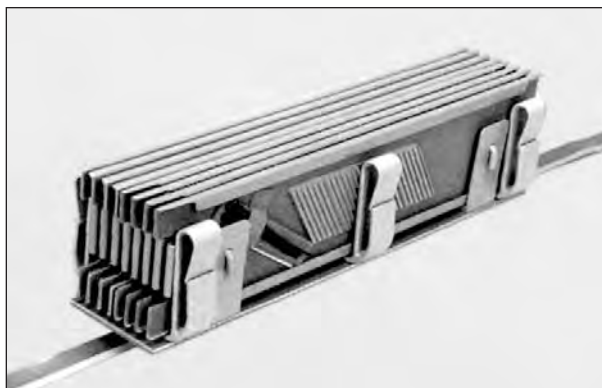
FIBERLIGN® Organizers

Catalog #8001059



Vertical organizer for 6.5" x 28.4" (165 x 727 mm) or 8.0" x 28.4" (203 x 721 mm) Splice Case. Accommodates up to eight splice trays unless otherwise noted.

Catalog #8001036



Vertical organizer for 6.5" x 38.4" (165 x 975mm) or 8.0" x 38.4" (203 x 975 mm) Splice Case. Accommodates up to eight splice trays.

Catalog Number	Splice Type for:	No. of Splice Trays	Splice Tray Capacity	
8001021	Protected Fusion Amp Optimate Norland	8	12	S
8001044		8	18	S
8001096		8	18	A
8001109*		8	18	A
8001024	Unprotected Fusion	8	12	S
8001041	3M Fibrlok Amp FingerSplice Siecor CamSplice Northern Telecom Lightbridge	8	12	S
8001098		8	12	A
8001085	Protected Mass FusionSplice	8	48	S
8001091	Reliance Corelink	8	12	S

(A) signifies an ADOBE™ Splice Tray.

(S) signifies a standard size thermal-formed splice tray.

*ADOBE™ Splice Tray with Felt.

Catalog Number	Splice Type for:	No. of Splice Trays	Splice Tray Capacity	
8001028	Protected Fusion Amp Optimate Norland	8	24	S
—	Unprotected Fusion	—	—	—
8001052	3M Fibrlok Amp FingerSplice Siecor CamSplice Northern Telecom Lightbridge	8	24	S
8001026	AT&T Rotary AT&T CSL	8	24	S
—	Protected Mass FusionSplice	—	—	—
—	3M Mass Connector	—	—	—
—	Reliance Corelink	—	—	—

FIBERLIGN® Organizers

Catalog #8001043



Vertical organizer for 9.5" x 28.4" (241 x 721 mm) Splice Case. Accommodates up to sixteen splice trays unless otherwise noted.

Catalog #8001049



Vertical organizer for 9.5" x 38.4" (241 x 975 mm) Splice Case. Accommodates up to sixteen splice trays.

Catalog Number	Splice Type for:	No. of Splice Trays	Splice Tray Capacity	
8001021	Protected Fusion Amp Optimate Norland	16	12	S
8001044		16	18	S
8001096		16	18	A
8001109*		16	18	A
8001024	Unprotected Fusion	16	12	S
8001041	3M Fibrlok Amp FingerSplice Siecor CamSplice Northern Telecom Lightbridge	16	12	S
8001098		16	12	A
8001085	Protected Mass FusionSplice	16	48	S
8001091	Reliance Corelink	16	12	S

(A) signifies an ADOBE™ Splice Tray.

(S) signifies a standard size thermal-formed splice tray.

*ADOBE™ Splice Tray with Felt.

**If splicing 900 micron tip cable, splice tray will accommodate only 12 splices.

Catalog Number	Splice Type for:	No. of Splice Trays	Splice Tray Capacity	
8001028	Protected Fusion Amp Optimate Norland	16	24	S
—	Unprotected Fusion	—	—	—
8001052	3M Fibrlok Amp FingerSplice Siecor CamSplice Northern Telecom Lightbridge	16	24	S
8001026	AT&T Rotary AT&T CSL	16	24	S
—	Protected Mass FusionSplice	—	—	—
—	3M Mass Connector	—	—	—
—	Reliance Corelink	—	—	—

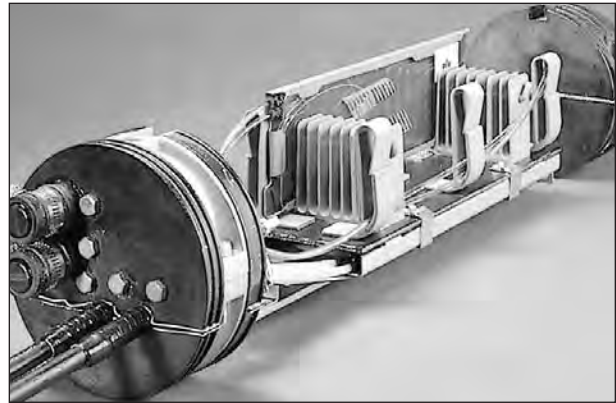


FIBERLIGN® UNI-CLOSURE

The Versatile, Re-enterable Closure Engineered for Unitube or Loose Buffer Tube Fiber Optic Cable Installation

The FIBERLIGN UNI-CLOSURE provides an airtight, watertight system that is designed to protect, store, route and organize fibers from unitube or buffer tube cables in any environment. Whether you are splicing cable above or below ground, the FIBERLIGN UNI-CLOSURE is designed to provide an airtight seal in wet, dry, cold or hot weather.

Available in three sizes, 6.5" x 28" (165 x 711 mm), 8.0" x 28" (203 x 711 mm), and 9.5" x 28" (241 x 711 mm), the FIBERLIGN UNI-CLOSURE accommodates 8-16 splice trays (see Splice Tray Capacity chart), each of which protects, secures, and organizes up to 12 or 18 fiber splices. Splice Trays are also available for protected mass fusion splices, and mass mechanical connectors. The transition tray allows you to store excess fiber for easy fiber count changes in the future.



Splice Tray Capacity	
6.5" x 28" (165 x 711 mm)	8
8.0" x 28" (203 x 711 mm)	10
9.5" x 28" (241 x 711 mm)	16

FIBERLIGN® UNI-CLOSURE

FIBERLIGN UNI-CLOSURE

Design Features:

Future Cable Entry with Factory-Installed Cable Entrance Ports:

The FIBERLIGN UNI-CLOSURE utilizes End Plates made from engineered plastic filled with rigid polyurethane foam. The 6.5" x 28" (165 x 721 mm) and the 8.0" x 28" (203 x 721 mm) FIBERLIGN UNI-CLOSURES are designed to have three cable entries drilled on-site with the Power End Plate Cutter. These closures are also equipped with two factory-installed cable ports for future cable entry. This allows for easy grounding, simple strength member tie-off, and easy installation of future cables. The 9.5" x 28" (241 x 721 mm) FIBERLIGN UNI-CLOSURE is designed for eight field-drilled cable entries without any factory-installed cable ports. A replacement End Plate is available for the 9.5" x 28" (241 x 721 mm) FIBERLIGN UNI-CLOSURE with four factory-installed cable ports and room for eight field-drilled cable entries.

LOCKBAR™ Fastening

The LOCKBAR System utilizes front and back bars that fit into the flanges on both the Splice Case and the inner closure assembly. With factory-assembled nuts and bolts, and special sizing, no special tools are needed for installation. This simplified installation, saves time, and allows for easy re-entry without using re-entry kits.

Transition Tray and Organizer Ensure the Integrity of Fibers:

This uniquely engineered and field proven assembly accommodates continuous and cut fibers. The transition tray is designed to allow ample room for storing fiber. It provides a generous bending radius designed to assure long-term optical performance.

6.5" (165 mm) FIBERLIGN UNI-CLOSURE	
IF UNITUBE CABLE IS:	ORGANIZER WILL ACCOMMODATE:
1. Continuous Loop (uncut cable)	-Ribbon type 72 fibers -Loose fiber type 96 fibers -Loose buffer tube 96 fibers
2. Cut Cables	-Ribbon type 144 fibers -Loose fiber 96 fibers -Loose buffer tube 96 fibers
8" (203 mm) FIBERLIGN UNI-CLOSURE	
IF UNITUBE CABLE IS:	ORGANIZER WILL ACCOMMODATE:
1. Continuous Loop (uncut cable)	-Ribbon type 144 fibers -Loose fiber type 216 fibers -Loose buffer tube 216 fibers
2. Cut Cable	-Ribbon type 216 fibers -Loose fiber 216 fibers -Loose buffer tube 216 fibers
9.5" (241 mm) FIBERLIGN UNI-CLOSURE	
IF UNITUBE CABLE IS:	ORGANIZER WILL ACCOMMODATE:
1. Continuous Loop (uncut cable)	-Ribbon type 288 fibers -Loose fiber type 384 fibers -Loose buffer tube 288 fibers
2. Cut Cables	-Ribbon type 432 fibers -Loose fiber 432 fibers -Loose buffer tube 384 fibers

FIBERLIGN UNI-CLOSURE Ordering Chart	
Catalog Number	Dimensions (mm)
8006443	6.5" x 28" (165 x 721) FIBERLIGN UNI-CLOSURE for butt splice applications. Includes: One Two-Section End Plate, one Three-Section End Plate with two factory-installed cable ports [for future cable entry, cables up to 0.8" (20) diameter], five bonding/grounding inserts, five "L" brackets for cable shield isolation/strength member tie-off, organizer, transition compartment and transport tubes.
8006450	8.0" x 28" (203 x 721) FIBERLIGN UNI-CLOSURE for butt splice applications. Includes: one Two-Section End Plate, one Three-Section End Plate with two factory-installed cable ports [for future cable entry, cables up to 0.8" (20) diameter], five bonding/grounding inserts, five "L" brackets for cable shield isolation/strength member tie-off, organizer, transition compartment and transport tubes.
8006542	9.5" x 28" (241 x 721) FIBERLIGN UNI-CLOSURE for butt splice applications. Includes: one Two-Section End Plate, one Three-Section End Plate with eight bonding/grounding inserts (no factory-installed cable ports), eight "L" brackets for cable shield isolation/strength member tie-off, organizer, transition compartment and transport tubes.



FIBERLIGN® UNI-CLOSURE

Splice Trays

Splice Trays for the FIBERLIGN UNI-CLOSURE are 13" 330 mm) long by 3¹⁵/₁₆" (100mm) wide. There are now two types of trays offered. The Standard Tray is available for all UNI-CLOSURES and for all splicing applications. Standard Trays are fully-lined to cushion fibers and provide a contrasting background when selecting or matching varied colored fibers. The ADOBE™ Splice Tray is available as a lower cost alternative and is interchangeable with many of the Standard Trays. Both versions come with a clear snap-on cover, felt tape for protecting buffer tubes, and tie wraps to secure the buffer tubes to the trays.

FIBERLIGN UNI-CLOSURE Splice Tray Ordering Chart (mm)						
Catalog Number	Splice Type for:	Maximum No. of Trays per Closure			Splice Tray Capacity	
		6.5" (165)	8.0" (203)	9.5" (241)		
8001041	3M Fibrok	8	10	16	12	S
8001098	Amp FingerSplice Siecor CamSplice Northern Telecom Lightbridge	8	10	16	12	A
8001022	AT&T Rotary AT&T Light Splice	8	10	16	12	S
8001085	Protected Mass Fusion Splice	8	10	16	48	S
8001021	Protected Fusion Amp Optimate Norland	8	10	16	12	S
8001044		8	10	16	18	S
8001096		8	10	16	18	A

(A) signifies ADOBE™ Splice Tray

(S) signifies a standard size thermal-formed splice tray

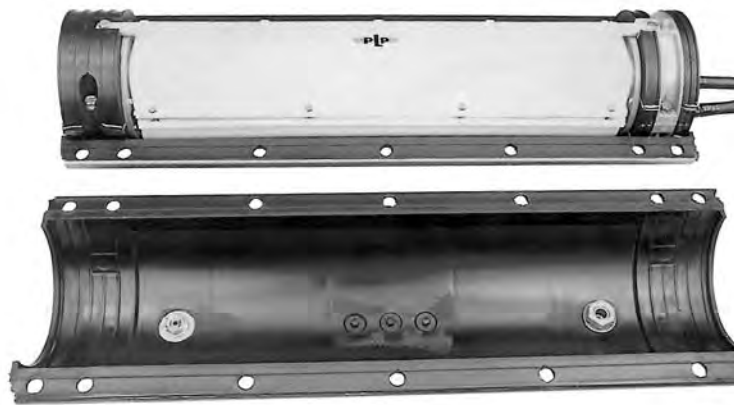
FIBERLIGN UNI-CLOSURE Replacement End Plates and Accessories	
Catalog Number	Description (mm)
8003178	6.5" (165) Diameter Three-Section End Plate with five bonding/grounding inserts, two factory-installed cable ports (for future cable entry, cables up to 0.8" diameter) supplied with five "L" brackets for cable shield isolation/strength member tie-off.
8003213	8.0" (203) Diameter Three-Section End Plate with five bonding/grounding inserts, two factory-installed cable ports [for future cable entry, cables up to 0.8" (20) diameter] supplied with five "L" brackets for cable shield isolation/strength member tie-off.
8003226	6.5" (165) Diameter Three-Section End Plate with six bonding/grounding inserts (no factory-installed cable ports), supplied with six "L" brackets for cable shield isolation/strength member tie-off.
8003227	6.5" (165) Diameter Three-Section End Plate with six bonding/grounding inserts (no factory-installed cable ports), supplied with six "L" brackets for cable shield isolation/strength member tie-off.
80805166	9.5" (241) Diameter Three-Section End Plate with eight bonding/grounding inserts (no factory-installed cable ports), supplied with eight "L" brackets for cable shield isolation/strength member tie-off.
80805120	9.5" (241) Diameter Three-Section End Plate with eight bonding/grounding inserts (no factory-installed cable ports), supplied with eight "L" brackets for cable shield isolation/strength member tie-off.
8003175	L-Bracket Bonding Kit (4) bonding brackets and retainer clips
8003176	Transport tube kit [8 tubes, 34" long (863mm)] for 6.5" x 28" (165 x 711 mm) and 8.0" x 28" (203 x 711 mm) closures.
8003265	Transport tube kit [8 tubes, 40" long (1016mm)] for 9.5" x 28" (241 x 711 mm) closure

FIBERLIGN® Fiber Safe

The Encapsulated, Re-enterable Closure Assembly

The FIBERLIGN® Fiber Safe is designed for protecting underground, buried and aerial fiber optic splices. More versatile and flexible than other fiber optic closures, the FIBERLIGN Fiber Safe incorporates a closure within a closure for double protection. The FIBERLIGN Fiber Safe can accommodate butt splice applications or in-line configurations using various End Plate and Splice Case

combinations. Re-enterable encapsulant fills the void between the inner closure and outer Splice Case assembly to provide an additional barrier against moisture. The FIBERLIGN Fiber Safe is easily re-enterable. Unique LOCKBAR™ Fastening allows rapid re-entry for system additions. The closure is filled and refilled through an exterior port in the Splice Case.



Design Features:

Butt Splice Applications

The FIBERLIGN Fiber Safe utilizes a preassembled 6.5" (165 mm) End Plate and a variety of cable entry End Plates for butt entry applications. 28" (711 mm) Splice Case shells are provided for these applications.

In-line Splice Applications

For in-line configurations, the FIBERLIGN Fiber Safe is designed with two 6.5" (165 mm) Three-Section End Plates and 38" (975 mm) Splice Case shells are provided.

Cable Entry End Plates

A variety of cable entry End Plates are available which provide simple cable entry for both initial construction and future entry. External bonding capability is provided throughout.

Splice Trays

The FIBERLIGN Fiber Safe accommodates 6 splice trays holding 12 or 18 splices per tray. An expanded capacity closure is available for butt splice applications which utilizes up to 6 splice trays holding 24 splices per tray (Cat. No.: 8001004). Splice trays are available for both fusion and mechanical splices.

Vertical Filing

The PREFORMED™ vertical file system allows trays to be individually removed, easily reworked and securely repositioned. The snap-on lid assures additional protection to each tray.

Expressing Fibers

Provisions are made for expressing uncut fibers through the inner closure.

LOCKBAR™ Fastening

The LOCKBAR System utilizes front and back bars that fit into the flange on both the Splice Case and the inner closure assembly. With factory-assembled nuts and bolts and special sizing, no special tools are needed for a fast, dependable closure. The dual closure system is designed to assure maximum system integrity, with outstanding accessibility and ease of re-entry.

Protective Collar

An innovative collar attaches to the End Plate inside the closure which provides an additional watertight seal and acts as a substrate to which resin will bond.



FIBERLIGN® Fiber Safe



Three-Section End Plate (provided with FIBERLIGN Fiber Safe Closures 8001001, 8001002, 8001003, 8001004, 8001005, and 8001006)



End Plate with two factory-installed inserts for future entry (provided with FIBERLIGN Fiber Safe Closure 8001007)



End Plate with four factory-installed inserts (provided with FIBERLIGN Fiber Safe Closure 8001008)

How to order FIBERLIGN Fiber Safe and Accessories

1. Specify 8001001, 8001003, 8001004, 8001005, 8001007 or 8001008 FIBERLIGN Fiber Safe for butt splice applications or specify 8001002 or 8001006 FIBERLIGN Fiber Safe for in-line splice applications.
2. Specify 8000310 Non Re-enterable Resin Kit (preferred) for filling the cup; two required for in-line or specify 80803316 Re-enterable Encapsulant Kit (optional) for filling the cup; two required for in-line.
3. Specify 80802829 Re-enterable Encapsulant for filling the 8001001, 8001003, 8001005, 8001007 or 8001008 FIBERLIGN Fiber Safe or specify 80802826 Re-enterable Encapsulant for filling the 8001002, 8001004, or 8001006 FIBERLIGN Fiber Safe.
4. Order appropriate Fiber Optic Splice Trays. Each Fiber Optic Splice Tray is supplied with snap-on clear cover and will accommodate up to 12 or up to 18 fiber optic splices.
5. Order additional End Plate Kits as needed.

Encapsulant Ordering Chart				
FIBERLIGN Fiber Safe Catalog Number	Type of Splice	Protective Collar Encapsulant		FIBERLIGN Fiber Safe Encapsulant
		Re-enterable	Non Re-enterable	
8001001 8001003 8001005 8001007 8001008	Butt	80803316	8000310	80802829
8001004	Butt	80803316	8000310	80802826
8001002 8001006	In-line	80803316 (2 kits)	8000310 (2 kits)	80802826

FIBERLIGN Fiber Safe	
Catalog Number	Description (mm)
8001003	6.5" x 28" (165 x 711) FIBERLIGN Fiber Safe for butt splice applications. Includes: One Two-Section End Plate and one Three-Section End Plate.
8001002	6.5" x 38" (165 x 965) FIBERLIGN Fiber Safe for in-line splice applications. Includes: Two Three-Section End Plates.
8001001	6.5" x 28" (165 x 711) FIBERLIGN Fiber Safe for butt splice applications. Includes: One Two-Section End Plate and one Three-Section End Plate and one Fiber Optic Splice Tray with cover (8001021).
8001004	6.5" x 38" (165 x 965) FIBERLIGN Fiber Safe for butt splice applications. (Up to 144 Splices) Includes: One Two-Section End Plate and one Three-Section End Plate.
8001005	6.5" x 28" (165 x 711) FIBERLIGN Fiber Safe for butt splice applications. Includes: One Two-Section End Plate, one Three-Section End Plate and RUS listed shield connectors. (RUS LISTED)
8001006	6.5" x 38" (165 x 965) FIBERLIGN Fiber Safe for in-line splice applications. Includes: Two Three-Section End Plates, and RUS listed shield connectors. (RUS LISTED)
8001007	6.5" x 28" (165 x 711) FIBERLIGN Fiber Safe for butt splice applications. Includes: One Two-Section End Plate and one Three-Section End Plate with two factory-installed inserts (cables up to 0.8" diameter) for future entry.
8001008	6.5" x 28" (165 x 711) FIBERLIGN Fiber Safe for butt splice applications. Includes: Two Two-Section End Plates; one blank and one with four factory-installed inserts (cables up to 0.8" [20 mm] diameter).
8001010	6.5" x 28" (165 x 711) FIBERLIGN Fiber Safe for butt splice applications. Includes: One Two-Section End Plate, one Three-Section End Plate and RUS listed shield connectors. (RUS LISTED Flame Retardant End Plates)

FIBERLIGN® Fiber Safe

SPLICE TRAYS for all Closures except 8001004

The Splice Trays for all FIBERLIGN Fiber Safe Closures, except the 8001004, are 13" long by 3-15/16" wide (330 x 100 mm), and each is supplied with a snap-on clear cover. There are now two types of splice trays offered. The Standard Thermal-formed Tray is available for all closures and splicing applications. The ADOBE™ Splice Tray is available as a lower cost alternative and is interchangeable with many of the thermal-formed trays. Select the appropriate catalog number from the chart below.

Catalog Number	Splice Type for:	No. of Splice Trays	Splice Tray Capacity	
8001021	Protected Fusion Amp Optimate Norland	6	12	S
8001044		6	18	S
8001096		6	18	A
8001109*		6	18	A
8001024	Unprotected Fusion	6	12	S
8001041	3M Fibrlok Amp FingerSplice	6	12	S
8001098	Siecor CamSplice Northern Telecom Lightbridge	6	12	A
8001022	AT&T Rotary AT&T LightSplice	6	12	S

(A) signifies ADOBE™ Splice Tray.

(S) signifies a standard size thermal-formed splice tray.

* ADOBE™ Splice Tray with Felt.

SPLICE TRAYS for 8001004 Closure

The Splice Trays for the 8001004 FIBERLIGN Fiber Safe are 17-3/8" long by 3-15/16" wide (441 x 100 mm), and each is supplied with a snap-on clear cover. The Splice Trays accommodate 24 fiber splices.

Catalog Number	Splice Type for:	No. of Splice Trays	Splice Tray Capacity	
8001028	Protected Fusion Amp Optimate Norland	6	24	S
8001026	AT&T Rotary AT&T LightSplice	6	24	S
8001052	3M Fibrlok Amp FingerSplice Siecor CamSplice Northern Telecom Lightbridge	6	24	S

(S) signifies a standard size thermal-formed splice tray

C-Cement

C-Cement is required for both cable preparation and End Plate preparation, but is not supplied with Splice Cases or End Plate Kits.

C-CEMENT		
C-Cement	80805238	1 oz. tube
C-Cement	80802377	4 oz. can



FIBERLIGN® Fiber Safe

Accessories

FIBERLIGN Fiber Safe (mm)	
Catalog Number	Encapsulant Description
8000310	8 oz. Resin Kit (non-re-enterable) for filling cup.
80803316	300 Gram Kit RD Encapsulant (re-enterable) for filling cup.
80802829	5500 Gram Kit RD Encapsulant (re-enterable) for filling 8001003, 8001001, 8001005, 8001007 or 8001008 FIBERLIGN Fiber Safe.
80802826	8000 Gram Kit RD Encapsulant (re-enterable) for filling 8001002, 8001004, or 8001006 FIBERLIGN Fiber Safe.
Catalog Number	Replacement Parts Description
80803149	One Two-Section End Plate with protective collar assembly for cable blocking.
80803148	One Three-Section End Plate with protective collar assembly for cable blocking.
80803695	One Three-Section End Plate with two factory-installed ports (for future cable entry, for cables up to 0.8" [20] in diameter), four bonding/grounding inserts, four modified brackets for cable shield isolation/strength member tie-off, and protective collar assembly for cable blocking. Designed for two field-drilled cable holes.
80803668	One Two-Section End Plate with four factory-installed ports (for future cable entry, for cables up to 0.8" [20] in diameter), four bonding/grounding inserts, four modified brackets for cable shield isolation/strength member tie-off, and protective collar assembly for cable blocking. No room for field-drilled cable holes.
8001032	Re-entry kit for 6.5" x 28" (165 x 711) FIBERLIGN Fiber Safe. Includes: Gaskets for collars and inner closure and a replacement flange clamp assembly.
8001033	Re-entry kit for 6.5" x 38" (165 x 965) FIBERLIGN Fiber Safe. Includes: Gaskets for collars and inner closure and a replacement flange clamp assembly.