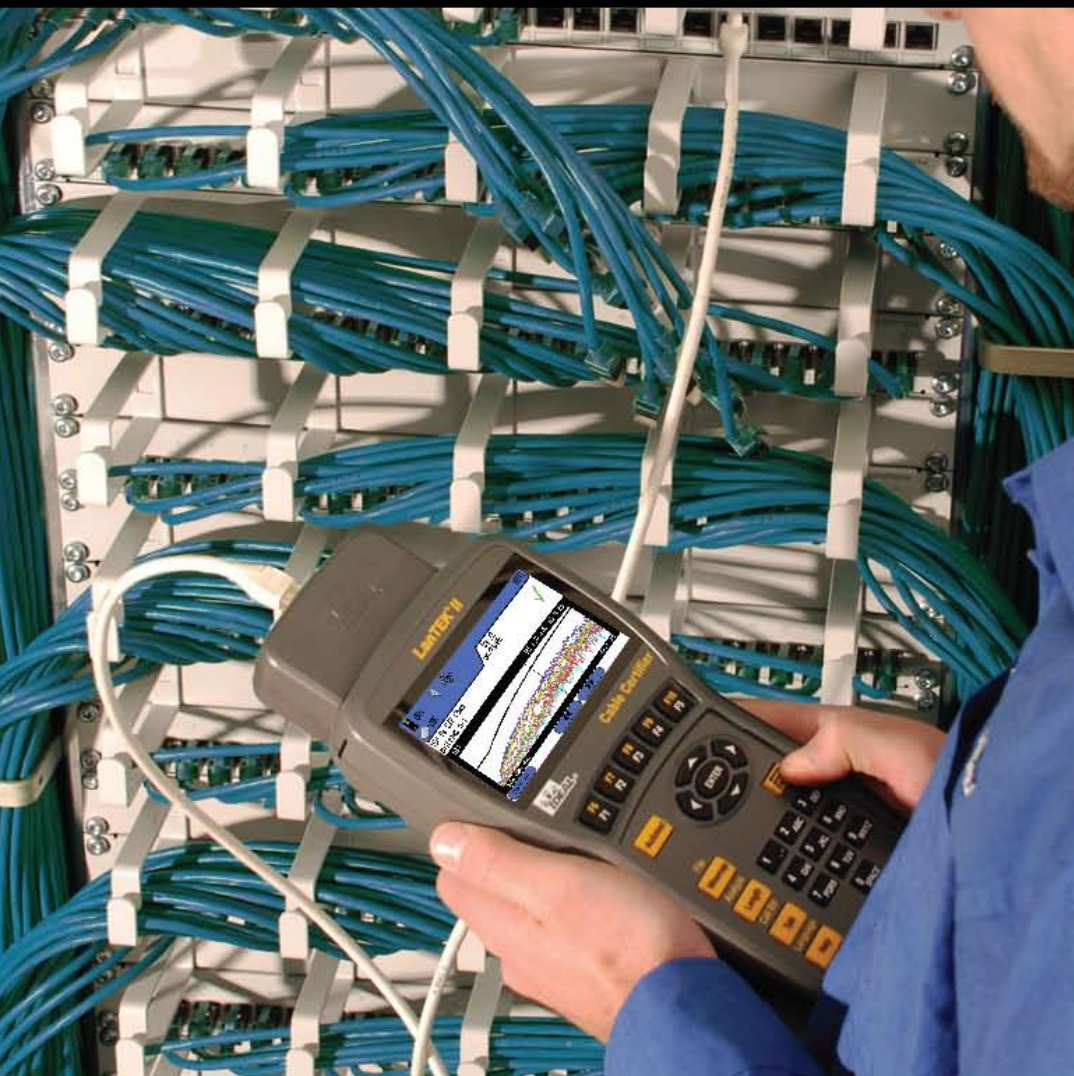




## LanTEK® II Series Cable Certifier



- Best price/performance options - models ranging from 350 MHz for Category 6/ISO E through Category 7A/ISO F<sub>A</sub> certification
- High speed testing saves time and money
- Most internal memory available - store over 1700 Category 6/ISO E tests with graphs
- Patented testing method - eliminate expensive permanent link adapters and test with patch cords for most installation
- Extraordinary fast fiber testing with FiberTEK® FDX - the first dual wavelength, bidirectional fiber certification tool
- Large, ultra-bright display - 4.3 in. wide screen display with white LED backlighting provides easy viewing of high-frequency data plots
- 350 MHz & 500 MHz models are fully upgradable to 1000 MHz
- Smart lithium-ion battery technology - 18 hour battery life with self calibrating "fuel gauge" for accurate capacity readings

### LanTEK® II 350/500/1000

LanTEK II offers the best speed, performance and price available today. Nine second Cat 5E and 14 second Cat 6 tests with full performance data plus 10 Gigabit Alien Crosstalk testing that's more than 4x faster than other systems making LanTEK II the ultimate copper certification platform. The patented universal adapter system lets you certify most cabling with off-the-shelf patch cords saving time and money by eliminating the need for proprietary permanent link adapters.

The optional FiberTEK® FDX modules provide the world's only dual wavelength, bidirectional fiber certification available. That's more than 3x faster than existing testers. Three models provide the needed performance without the added expense; choose from 350 MHz/Cat 6, 500 MHz/Cat 6A or 1000 MHz/Cat7A all with accuracy independently verified by ETL.

LanTEK II also offers ultimate versatility with options for certification of TERA, GG45 and EC7 category 7/7A systems, plus M12 industrial Ethernet and coaxial test adapters.



CUT

STRIP

TERMINATE

TEST

CERTIFY



## More Ways to Save

Save time and money in more ways than ever with LanTEK® II.

### Universal Link Testing

The patented testing process eliminates the need for costly permanent link adapters. By using universal test adapters for Category 5E through 6A certification, patch cords are typically the only item that needs to be replaced when worn or damaged. This eliminates the wait and expense of proprietary adapters meaning more time is spent testing and less time searching for replacement parts.

### Channel and Permanent Link Testing with One Adapter

Only LanTEK allows permanent link and channel certification without changing adapters. The patented DualMODE™ function allows cabling to be certified to two different standards with one press of the Autotest button; half the time it would take with any other certifier.

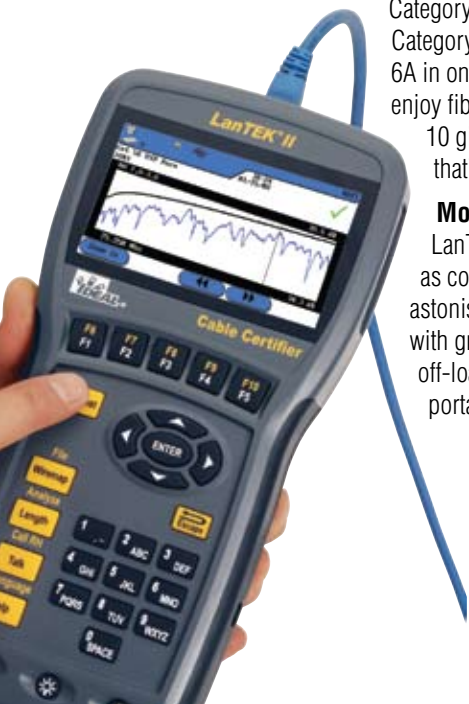
Certify cabling to both Category 6 permanent link and Category 6 channel link standards at the same time, satisfying requirements from cabling manufacturers and end users without costing any more time in the field. Or certify cabling to existing current standards and proposed future standards which eliminates retesting at a later date.

### Fast Test Times

Category 5E certification in 11 seconds, Category 6 in 14 seconds, and Category 6A in only 16 seconds with graphs! Plus enjoy fiber certification that's 3x faster and 10 gigabit alien crosstalk certification that's 4x faster than the competition.

### Most Memory Capacity

LanTEK II has 7x the storage capacity as competitive certifiers. Save an astonishing 1700 Category 6 results with graphs. If the memory fills, simply off-load the data to a USB flash drive for portability and archiving.



### Cut the Power Cord

The new smart lithium battery technology provides an amazing 18 hours of use in the field. The revolutionary battery technology has two charging modes that offer the best flexibility available. Slow charge the battery overnight while it is inside the LanTEK II, or remove the battery and plug in to its dedicated charging port for a quick five hour charge. Plus, the battery's internal fuel gauge automatically self-adjusts every time the pack is completely discharged and recharged, providing accurate charge readings over the life of the battery pack.

### Three Models to Suit Any Need

LanTEK II is offered in three models: 350, 500 and 1000. The LanTEK II-350 offers 350MHz of frequency sweep to certify Category 6 cabling and below. LanTEK II-500 sweeps to 500MHz, and is the only certifier designed specifically for Category 6A cabling. LanTEK II-1000 is the world's fastest certifier with a full 1GHz of certification bandwidth to go well beyond Category 7/ISO Class F (600MHz), all the way to ISO Class F<sub>A</sub> (1000MHz) standard to support shared sheath applications such as CATV, Ethernet and voice in the same cable.

### Maximum Reporting Power

The new IDEAL DataCENTER (IDC) software puts the power in the fingertips of the user. The main test grid display can be customized to display and sort by virtually any test parameter allowing for quick identification of tests that



are below desired performance margins. Quickly scan through plot data by choosing a plot type and scrolling through the test list to instantly refresh the plot for each test. This makes visually scanning through reports and searching for anomalies a breeze. IDC offers many reporting options such as detailed, brief, and single line reports, plus export data in XML, CSV and PDF formats. Plus the unique ability to customized the plots by inverting the scales, toggling linear or log frequencies and even adjusting colors makes IDC the most user friendly and powerful cable reporting software ever.



# LanTEK® II Series Cable Certifier

## FiberTEK® FDX

### Time Saving Fiber Certification

The FiberTEK FDX option allows users to add full Tier 1, standards compliant fiber certification capability to the LanTEK II certifier. Tier 1 certification utilizes a light source and power meter to measure the power loss of optical cabling. FiberTEK FDX modules incorporate dual light sources and a wide range power meter to allow testing loss of fiber links as well as to measure the light emitted from active network equipment for troubleshooting.

The full-duplex FiberTEK FDX represents the pinnacle of fiber optic certification, saving time and simplifying documentation by completely eliminating the need to swap launch cords or swap modules. The unique full-duplex operation tests a single strand of fiber at two wavelengths and in both directions, plus measures the length with one press of the Autotest button. This means that for each fiber, five test parameters are saved for each cable ID making it the easiest to use fiber certifier ever.

Three types of FiberTEK FDX are available to suit every installation. Multi-mode (850/1300nm) kits are available with either LED light sources for 10/100/1000Mbps certification, or VCSEL/laser sources with high dynamic range for certification of links greater than 2km in length. Single mode (1310/1550nm) kits feature laser sources as well. Combination multi-mode and single mode kits are available to further increase the FiberTEK FDX value.

	Att	Budget	Margin	
050nm	07.8 dB	12.5 dB	05.5 dB	✓
1300nm	01.2 dB	05.8 dB	03.8 dB	✓
050nm	06.9 dB	12.5 dB	05.6 dB	✓
1300nm	01.2 dB	05.8 dB	03.8 dB	✓

### Simplified Testing

Unlike other fiber certification add-ons that require up to four separate testing steps to test each fiber at both wavelengths and in both directions, FiberTEK FDX can accomplish this task in one easy step. FiberTEK FDX revolutionizes the whole fiber certification process by utilizing a sophisticated full duplex optical module that lets each fiber be certified in one simple step with no reversing of patch cords or swapping of optical modules. Four attenuation measurements plus length in one press of the Autotest button. The simplest way to certify fiber.

### FiberTEK® FDX Key Advantages

- The only solution that completely eliminates the need to swap fibers or modules, allowing complete one-step certification of horizontal and backbone cabling.
- More than 2x as fast as any other fiber certification tester
- Complies to TIA/ISO/IEC certification standards
- Available with both LED and VCSEL/laser multimode sources.
- Real-time power meter to aid in troubleshooting active equipment
- Field changeable adapters (SC, ST, FC) eliminate the need to carry multiple hybrid launch cords



# Specifications

LanTEK II	
Handset Dimensions	Height/Width/Depth: 10in. x 5in. x 2.1in. (25.4cm/12.7cm/5.3cm)
Handset weight w/battery	Display: 2.4lbs/1.1kg; Remote: 2.3lbs/1.0kg
Battery	Lithium ion, 7.4VDC, 6.6AH; Input: 12V/2A DC; Typical operating time: 18 hours (new battery running a Cat6 test every 2.5 minutes, full backlight); Charge time: 4 hours quick charge with battery removed from handset, 6 hours inside handset.
Input power	Handset: DC 12-15V, 2A; Line/mains power: AC 110-240V, 50/60Hz
Display	4.3" wide screen TFT, 480 x 272 pixel, 95 x 54mm viewable area
Connectivity	Adapter port: 168 pin ultra low crosstalk, mini-USB device port, USB host port (display handset only), four pin serial port (service use only), 1/8" talkset jack, power/charging jack
Frequency range	LanTEK II-350: 1-350MHz, LanTEK II-500: 1-500MHz, LanTEK II-1000: 1-1000MHz
Memory	Non-volatile flash, storage capacity for 1700 TIA-Cat 6 tests with graphs. Tests can be copied to USB flash drive, up to 64GB.
Measurements	Wire map, DC loop resistance length, capacitance, NEXT, insertion loss (formerly attenuation), ACR-N (formerly ACR), return loss, average impedance, propagation delay, delay skew, power sum NEXT, power sum ACR-N (formerly power sum ACR), ACR-F (formerly ELFEXT), power sum ACR-F (formerly power sum ELFEXT), alien crosstalk (with optional AXT testing kit)
Length measurement	0-2000 ft.; 1 ft. resolution, +/- (3% + 3 ft.), distance to short/open reported
Supported cable types	TIA/EIA Category 3, 4, 5, 5E, 6 and 6A: 100Ω ISO/IEC Class C, D, E, EA, F, FA: 100Ω Cat 6/6A Class E/EA RJ-45 permanent link adapters: shielded and un-shielded cable, universal adapters provide channel, permanent link and basic link measurements.
Supported connectors	Additional adapters: GG45, ARJ45, TERA, EC7 (MMCPRO3000), Coax 50-75Ω (BNC connector), M12 industrial
Tone generator	Integrated into display and remote handset, compatible with standard analog inductive probes, selectable tone (high/low/warble) 500/600 Hz, selectable pin output.
Input protection	100V @ 25mA
Operating temperature	0°C to 50°C, non-condensing
Storage temperature	-20°C to 70°C, non-condensing
Vibration/shock	MIL-PRF-28800 F, Class 3
Supported languages	Chinese, Czech, Danish, Dutch, English, French, German, Italian, Korean, Norwegian, Polish, Portuguese, Russian, Spanish, Swedish
Accuracy	Baseline: Certified by ETL to meet IEC 61935 Level III/IIIe/IV; Channel/Permanent link: TIA 568-B.2-2 and IEC 61935 Level III/IIIe/IV
Warranty (LanTEK II/FiberTEK FDX)	One (1) Year from date of purchase Batteries and accessories are warranted 90 days from date of purchase
PC Software	Requirements: Microsoft Windows® XP or Vista, (32/64 bit) 512MB RAM, 500MB hard disk + 1GB for every 1,500 Category 6 tests
FiberTEK FDX	
Compatibility	LanTEK® II (any model)
Connector	User changeable adapter (SC, FC, ST), 2.5mm ferrule
Laser safety	Multi-mode 850 VCSEL: class 3, 5mW max; multi-mode 1300 laser: class 3, 5mW max; Single mode 1310 & 1550: class 3, 5mW max
Power meter accuracy	± .5dB from 0dBm to -40dBm 850-1550nm; system dynamic range 40dB
Length accuracy	±3%; maximum distance measurement 3000m
Display resolution	Power/attenuation: 0.1dB, length: 0.1m/0.1ft

Cat. No.	Description
33-991	LanTEK® II-350: TIA/EIA Cat6, ISO Class E certifier w/Cat6 adapters
33-992	LanTEK® II-500: TIA/EIA Cat6A, ISO Class EA certifier w/Cat6A adapters
33-993	LanTEK® II-1000: TIA/EIA Cat7A, ISO Class F/FA certifier w/Cat6A adapters
LANTEK10GBKIT	Alien Crosstalk Testing Kit for 10GbE Certification. Compatible with 33-992 and 33-993.
Contents: LanTEK® II display and remote handset, two smart lithium ion batteries, two 110-240V power adapters with US/EU/UK plugs, lockable semi-rigid carrying case, Cat6A F/FTP patch cords, USB cable, DataCENTER data management and reporting software, two headsets, hanging straps and ETL accuracy certificate.	
33-990-FA01	Multimode (850/1300nm) kit with LED light sources for standard multi-mode fiber, 850nm LED, 1300nm LED
33-990-FA02	Multimode (850/1300nm) kit with VCSEL/laser light sources for laser optimized fiber, 850nm VCSEL, 1300nm FP laser
33-990-FA03	Single mode (1310/1550nm) kit with laser light sources for single mode fiber, 1310nm FP laser, 1550nm FP laser
33-990-FA04	Combination MM/SM kit with LED MM sources and laser SM sources (33-990-FA01 & 33-990-FA03)
33-990-FA05	Combination MM/SM kit with VCSEL/laser MM sources and laser SM sources (33-990-FA02 & 33-990-FA03)
Contents: Two FiberTEK FDX modules, lockable semi-rigid carrying case, SC, FC, ST adapters for modules (2 ea.), SC-SC patch cords (MM kits: 3x 62.5µm, 3x 50µm; SM kits: 3x 9µm SMF) compliant to ISO/IEC 14763-3 standard, quick reference guide, and electronic operation manual.	

Specifications subject to change without notice.

## IDEAL INDUSTRIES, INC.

Becker Place, Sycamore, IL 60178, USA / 815-895-5181 • 800-435-0705 in USA

International offices:

Australia • Brazil • Canada • China • Germany • Mexico • UK

For complete sales office contact information, visit us at:

[www.idealindustries.com](http://www.idealindustries.com)

