

Installation Instructions

MODEL NUMBERS: AAT-CAP/AAT-CAP-S/AAT-CAP-10-P



- (1) This enclosure is a passive wireless access point designed for low voltage applications only.
- (2) The ceiling tile grid system must be installed prior to the installation of this enclosure. The enclosure is supported by 4 brackets that rest on the ceiling tile grid system (see step 3) Install in accordance with local codes and regulations.

■ Assembly Components

- 1 ea. - Enclosure Box
 - 1 ea. - Door Frame
 - 1 ea. - Hinge
 - 1 ea. - Lock and Key
 - 8 ea. - 6-32 Pan Head Screws
 - 1 ea. - 1/4-20 Eyebolt
 - 1 ea. - Cable Access Bracket Cover
 - 1 ea. - Foam Seal Kit
 - 2 ea. - Support Arms (Left)
 - 2 ea. - Support Arms (Right)
 - 1 ea. - NEMA Power Junction Box (Model AAT-CAP-10-P only)
- Installation Instructions

Note: These units require fire rated cable penetration foam kits (included). These kits are designed for simple (in the field) installation. Installation instructions are included as Exhibit "A" incorporated in these instructions.



STEP 1

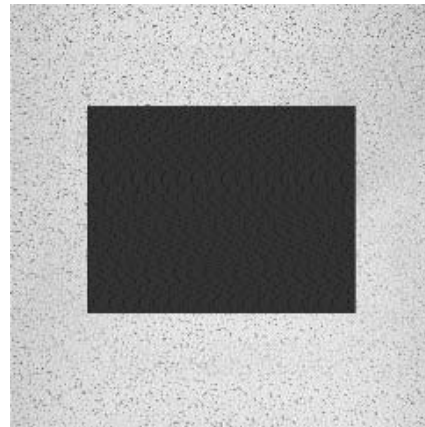
Opening the Shipping Box and Removal of the Enclosure

- Prepare a location for the inspection and of the AAT-CAP series wireless ceiling enclosure. Remove the enclosure from the shipping box and inspect. Check the enclosed parts against the parts lists above. Do not throw out any packing without checking for parts and components. Read all the installation instructions before beginning.
- On Model AAT-CAP-10-P, the NEMA Power Junction Box should be attached using four screws.

STEP 2

Remove and Cut Opening in Ceiling Tile

- Choose a location for the installation of the AAT-CAP series wireless enclosure. The ceiling tile grid system must be in place before installation of the AAT-CAP series enclosure. Remove the ceiling tile and cut a hole 11-1/8" x 13-1/2" in the center of the ceiling tile and insert the box. The box will have to be tilted to insert the side with the cable access bracket first. Reinstall the ceiling tile.



STEP 3

Installing the Enclosure

- The removal of an adjacent tile will allow access for the rest of the assembly. Once through the hole place the enclosure flange against the tile face and install the four support arms. The ends of the arms fit over the "T" bars of a standard ceiling grid. They are slotted to provide adjustment. Adjust then tighten all 6-32 screws holding the arms after installation. The weight of the enclosure should not rest on the ceiling tile, ONLY on the "T" bar support rail.

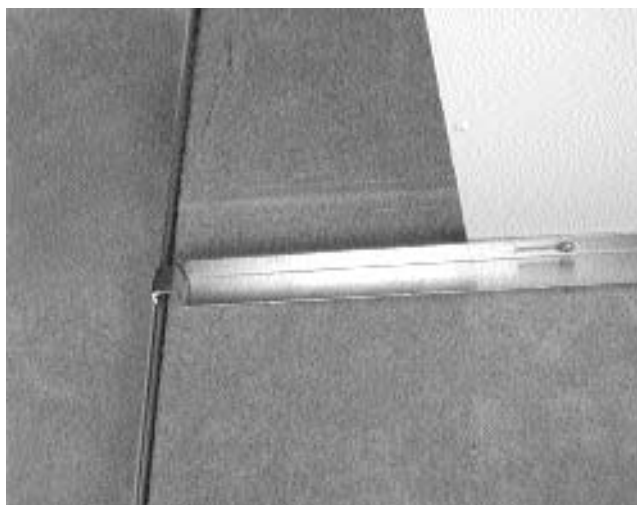
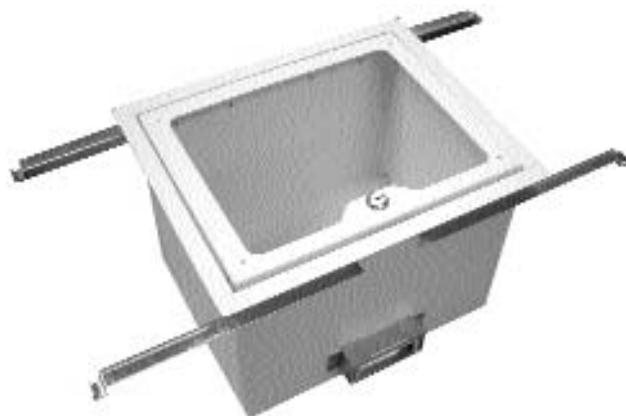
800-834-4969 U.S. & Canada • www.chatsworth.com



CHATSWORTH PRODUCTS, INC.

Installation Instructions

MODEL NUMBERS: AAT-CAP/AAT-CAP-S/AAT-CAP-10-P



The AAT-CAP series is ready to accept a blank door plate or a door plate designed to fit various wireless transmitters.

See Exhibit "A" for instructions for installing the fire-foam cable sealing kit in the cable access bracket.

Blank door plates and plates for other transmitters and accessories are available. Call 800-834-4969 for descriptions.

STEP 4

Complete Installation and Inspection

1. Before replacing all ceiling tiles install communications cable(s) with the provided fire-foam sealing kit as per exhibit "A" at the end of these instructions.
2. Ensure that the AAT-CAP series is hung from the building structure according to local code and regulations. The 1/4-20 eye bolt is provided for additional support attachment. **IMPORTANT**, the eye bolt **MUST** be installed at a minimum to fill the hole to maintain the plenum rating. Threaded rod may be used as an alternative method of support. The provided support arms still must be used to properly support the enclosure.
3. Ensure that the AAT-CAP series does not bare its weight directly onto the ceiling tile.
4. Ensure that the AAT-CAP series door opens and closes without binding or pinching cables and that the cable bend radius is within manufacturer's recommendations.

800-834-4969 U.S. & Canada • www.chatsworth.com



CHATSWORTH PRODUCTS, INC.

Installation Instructions

MODEL NUMBERS: AAT-CAP/AAT-CAP-S/AAT-CAP-10-P

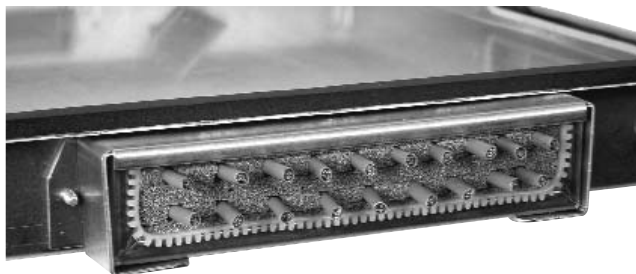


Exhibit " A "

Installation instructions for Installing Fire Penetration Kits

These kits are used to seal the unit with Fire Penetration Foam around installed access cables into the AAT-CAP Series Wireless Enclosure.

1. Remove the top plate from the first penetration to be cabled.
2. Sort and comb your cables for smooth and straight access through the penetration.
3. Lift cables and place two layers of foam underneath the cables.
4. Place cables and space so you can insert strips of foam between them firmly to create a seal. Cur foam strips at least 3/8" width to be placed between the cables.
5. Put down a layer or foam and repeat the process until all cables are beaded between layers of foam.
6. Take the remainder of the foam and fill the void to the top of the penetration and compress down with the top plate. Be careful not to bind cables in excess of cable manufacturers specifications. Cables are installed.

Installation hint: We suggest you stagger the cables in their layers to give a better seal. Example: 1st row - 4 cables / 2nd row - 5 cables / 3rd row - 6 cables / 4th row - 5 cables / 5th row - 6 cables and so on.

800-834-4969 U.S. & Canada • www.chatsworth.com



CHATSWORTH PRODUCTS, INC.

©2005 Chatsworth Products, Inc. All rights reserved. CPI is a registered trademark of Chatsworth Products, Inc. All other trademarks belong to their respective companies. 04/05