

Product Information Sheet

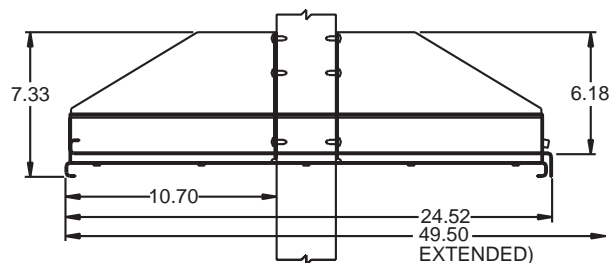
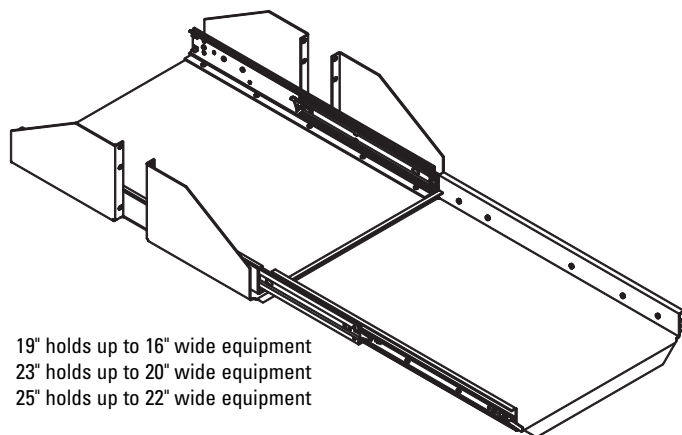
EXTRA-EXTENDED SLIDING EQUIPMENT SHELF

Provides a solution to the problem of racking today's extra-large network servers. With a full 25" extension, it is easy to access the back of network servers (or other large equipment). Shipping weight is 20 lb for 19", 22 lb for 23", and 23 lb for 25".

NOTE: To prevent tipping, rack must be properly attached to floor.

- Extends 25" providing access to back of server
- Strong, lightweight aluminum construction holds up to 150 lb
- Shelf locks in closed or fully open position
- Ships fully assembled
- Mounting hardware not included
- Holds equipment up to 24" deep

Optional Cable Management Arm on page 1-41.



Part Number			Color
19" Rack	23" Rack	25" Rack	
12227-119	12227-123	12227-125	Gray
12227-219	12227-223	12227-225	White
12227-519	12227-523	12227-525	Clear
12227-719	12227-723	12227-725	Black

800-834-4969 in US & Canada • www.chatsworth.com



CHATSWORTH PRODUCTS, INC.

©2002 Chatsworth Products, Inc. 5/02/GT