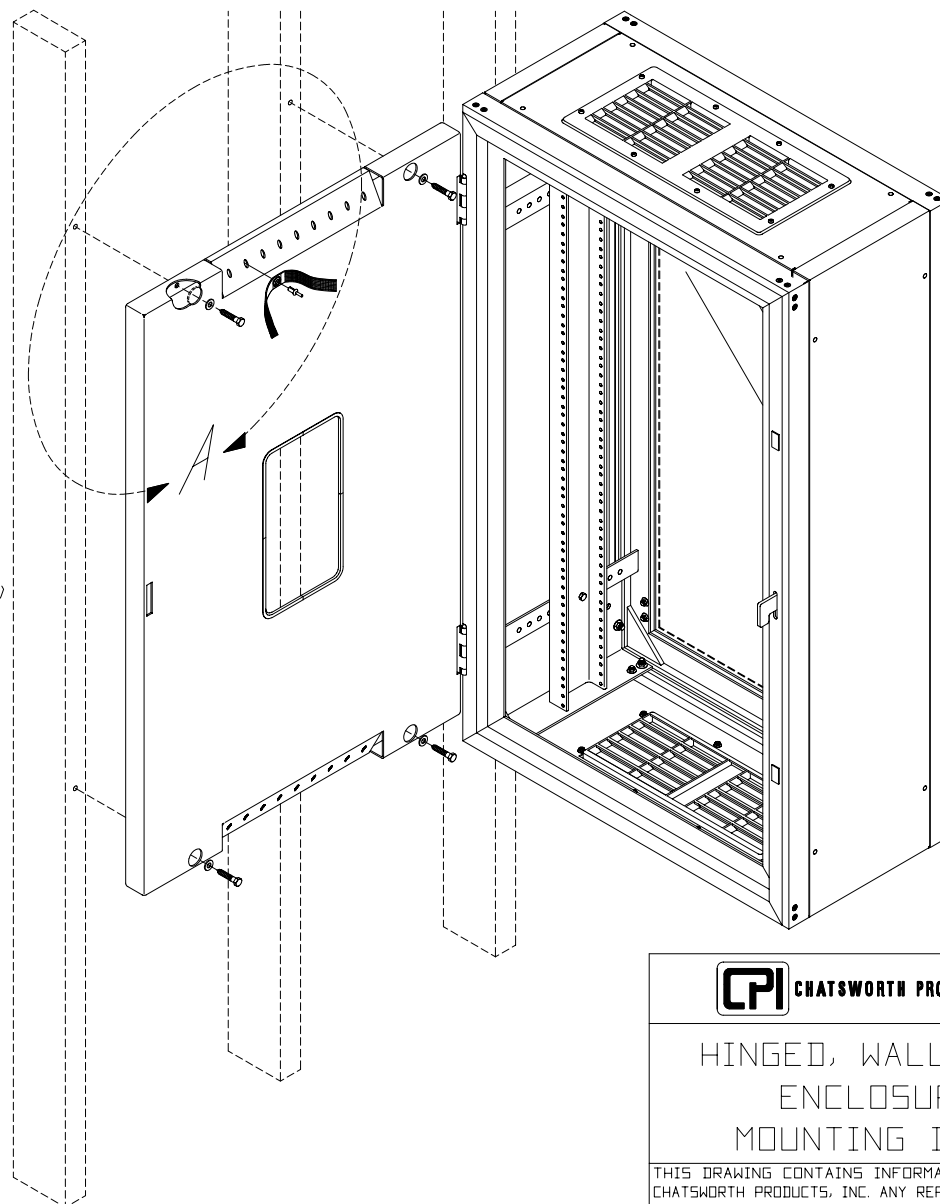
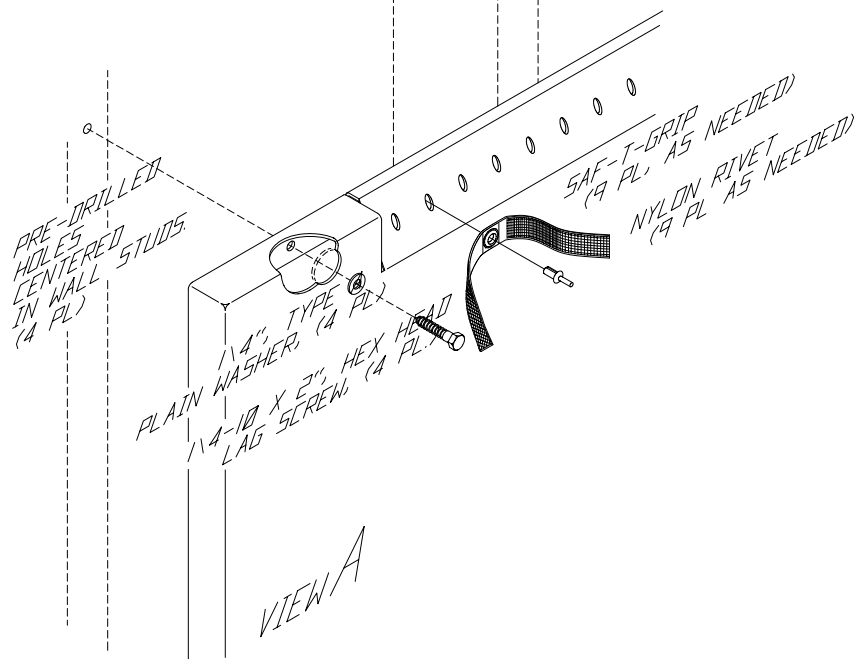


NOTE: IT IS ADVISED
THAT WALL-MOUNTED
EQUIPMENT RACKS
BE MOUNTED TO A 3/4"
PLYWOOD BACKBOARD,
SECURELY FASTENED
TO THE WALL STUDS.



CPI CHATSWORTH PRODUCTS, INC.

HINGED, WALL-MOUNT ENCLOSURE MOUNTING INSTR.

THIS DRAWING CONTAINS INFORMATION PROPRIETARY TO
CHATSWORTH PRODUCTS, INC. ANY REPRODUCTION DISCLOSURE
OR USE OF THIS DRAWING IS EXPRESSLY FORBIDDEN EXCEPT
AS AGREED TO IN WRITING BY CHATSWORTH PRODUCTS, INC.