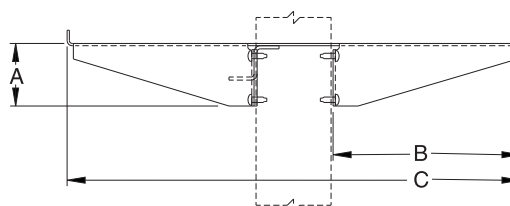
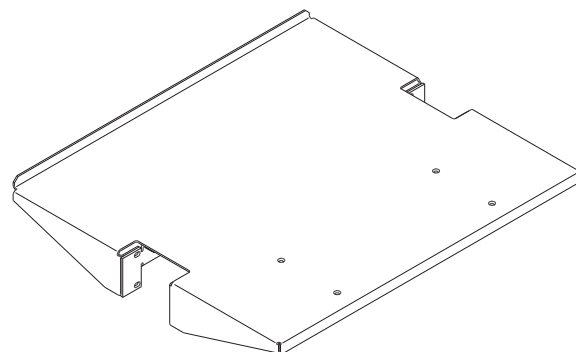


Product Cut Sheet

ADJUSTABLE MONITOR SHELF

Convenient for computer monitors or any equipment at any rack position. Mounting hardware not included.

- Made of strong, lightweight aluminum
- 19" version holds equipment up to 17.75"W x 18"D (450.9 mm x 460.0 mm)
- 23" version holds equipment up to 21.75"W x 18"D (552.5 mm x 460.0 mm)
- For use with 3"D (80 mm) double-sided racks only
- Supports 110 lb (49.9 kg) uniformly distributed



A 3.75" (95.3 mm)
B 7.47" (189.7 mm)
C 18.1" (459.7 mm)

Part Number	Color	Shipping Weight lb (kg)
19" Rack		
11245-119	Gray	8 (3.6)
11245-219	Computer White	8 (3.6)
11245-519	Clear	8 (3.6)
11245-719	Black	8 (3.6)
23" Rack		
11245-123	Gray	9 (4.1)
11245-223	Computer White	9 (4.1)
11245-523	Clear	9 (4.1)
11245-723	Black	9 (4.1)

800-834-4969 in U.S. & Canada • www.chatsworth.com



CHATSWORTH PRODUCTS, INC.

©2012 Chatsworth Products, Inc. All rights reserved. CPI, CPI Passive Cooling, MegaFrame, Saf-T-Grip, Seismic Frame, SlimFrame, TeraFrame, GlobalFrame, Cube-iT Plus, Evolution, OnTrac, QuadraRack and Velocity are federally registered trademarks of Chatsworth Products, Inc. eConnect and Simply Efficient are trademarks of Chatsworth Products, Inc. All other trademarks belong to their respective companies.