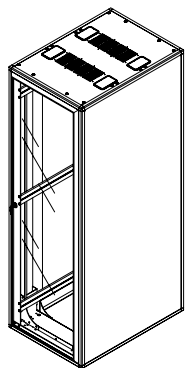
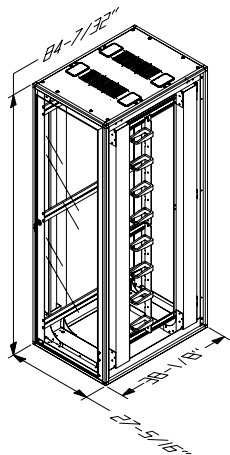


11972 SERIES

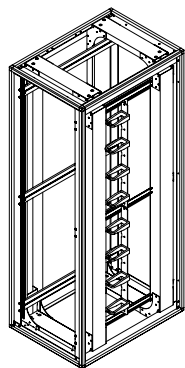
CABINET WITH
SIDE PANELS

11973 SERIES

CABINET W/O
SIDE PANELS

11974 SERIES

FRAME ONLY



DIMENSIONS SHOWN ABOVE ARE OVERALL, NOMINAL
CABINET DIMENSIONS NOT INCLUDING DOORS.



INSTALLATION INSTR SEISMIC MEGAFRAME CABINET

THIS DRAWING CONTAINS INFORMATION PROPRIETARY TO
CHATSWORTH PRODUCTS, INC. ANY REPRODUCTION, DISCLOSURE
OR USE OF THIS DRAWING IS EXPRESSLY FORBIDDEN EXCEPT
AS AGREED TO IN WRITING BY CHATSWORTH PRODUCTS, INC.

LIFTING CABINET

TO LIFT CABINET, REMOVE CABINET DOORS (IF PRESENT) AND USE
NYLON SLING PLACED THROUGH CABINET DOOR OPENINGS (SEE
FIG. 1 AT LEFT). CABINET WEIGHT SHOULD BEAR PRIMARILY ON
TWO INNER STEEL FRAMES AND NOT ON EXTERNAL ALUMINUM
FRAME.

CONCRETE DRILL

HILTI DD-160 DIAMOND CORE DRILLING SYSTEM, OR EQUIVALENT,
RECOMMENDED FOR DRILLING ANCHOR HOLES IN CONCRETE FLOOR.

CONCRETE ANCHOR

HILTI HSL M12X50 HEAVY DUTY SLEEVE ANCHOR (2" MAX GRIP
THICKNESS), OR EQUIVALENT, RECOMMENDED FOR MOUNTING
CABINET ON CONCRETE FLOOR.

LOCATING ANCHOR POINTS

RECOMMENDED METHOD FOR LOCATING ANCHOR POINTS ON FLOOR
IS TO MARK ANCHOR POINTS ON FLOOR THROUGH FLOOR ANCHOR
HOLES USING PENCIL OR FELT TIP PEN.

INSTALLING FLOOR ANCHORS

REFER TO FIG. 2 ON NEXT PAGE. INSTALL ONE FLOOR ANCHOR IN
EACH CORNER OF CABINET FOR A TOTAL OF FOUR EACH FLOOR
ANCHORS. IF POSSIBLE, USE PREFERRED FLOOR ANCHOR HOLES
DESIGNATED AS "P" HOLES. INSTALL FLOOR ANCHORS IN
ACCORDANCE WITH MANUFACTURER'S RECOMMENDATIONS.

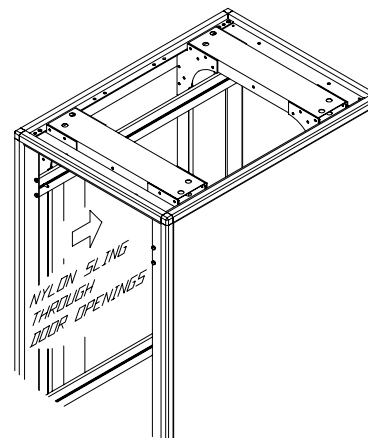
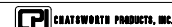


FIGURE 1

RECOMMENDED METHOD FOR
LIFTING CABINET



INSTALLATION INSTR SEISMIC MEGAFRAME CABINET

THIS DRAWING CONTAINS INFORMATION PROPRIETARY TO
CHATSWORTH PRODUCTS, INC. ANY REPRODUCTION, DISCLOSURE
OR USE OF THIS DRAWING IS EXPRESSLY FORBIDDEN EXCEPT
AS AGREED TO IN WRITING BY CHATSWORTH PRODUCTS, INC.

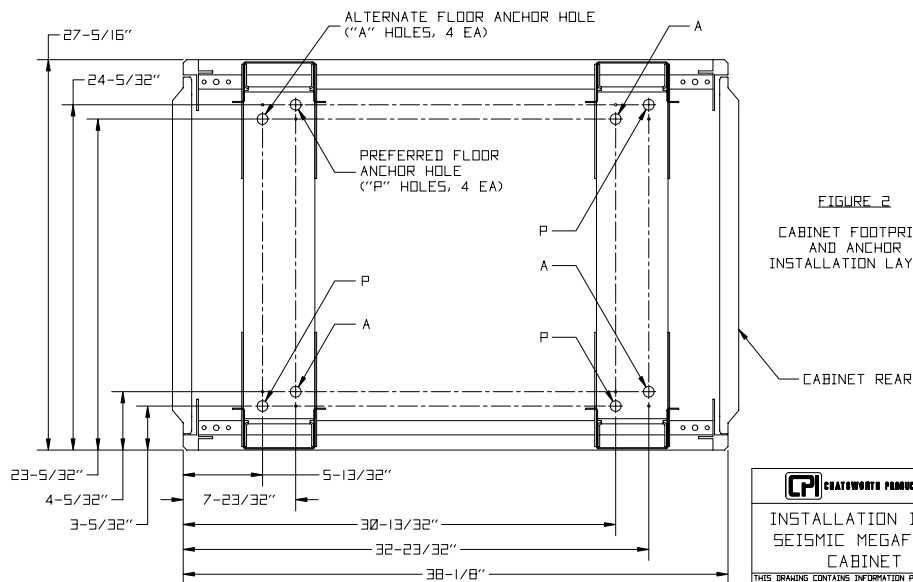


FIGURE 2

CABINET FOOTPRINT
AND ANCHOR
INSTALLATION LAYOUT



INSTALLATION INSTR SEISMIC MEGAFRAME CABINET

THIS DRAWING CONTAINS INFORMATION PROPRIETARY TO
CHATSWORTH PRODUCTS, INC. ANY REPRODUCTION, DISCLOSURE
OR USE OF THIS DRAWING IS EXPRESSLY FORBIDDEN EXCEPT
AS AGREED TO IN WRITING BY CHATSWORTH PRODUCTS, INC.