

MS-400 – Flush Mounting Sleeve

Description

The **MS-400** is a mounting sleeve box for flush mounting 100 or 400 Series Talk-A-Phone Emergency Phones.

Features

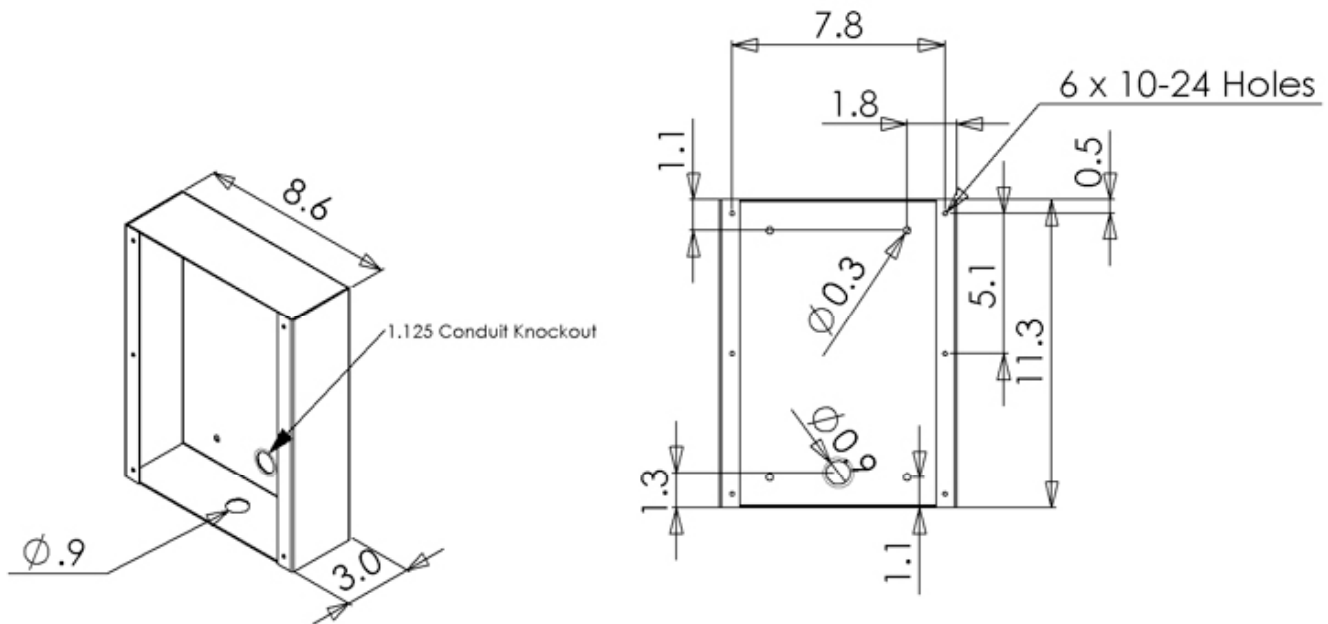
- Allows for easy mounting of Emergency Phone
- Conduit entry from bottom or back
- Extra space included for modular RJ11

Specifications

Construction: Cold Rolled Steel
 Dimensions: 8.6(218) W x 11.25(286) H x 3(76) D in(mm)
 Weight: 3.6 lbs. (1.6 kg)
 Conduit Entry: 0.875" hole on back and bottom for 0.5" conduit.
 1.125" punch out on back for 0.75" conduit
 Compliance: CSA Certified to UL Standard 60950



Dimensions



All dimensions are in inches
 Tolerance = ± 0.01 in.