

ETP-SMH – Hooded Surface Mount Accessory

Description

Talk-A-Phone's ETP-SMH Hooded Surface Mount Accessory is designed to surface mount any Talk-A-Phone flush mount emergency phone indoors or outdoors and to identify the location of an emergency phone with lettering on both sides. The unit is constructed of durable stainless steel with a weather-protective hood.

Talk-A-Phone's ETP-SMH Hooded Surface Mount Accessory is often used at university and college campuses, parking facilities, shopping malls, medical centers, industrial campuses and transit facilities.

Features

- Durable housing with weather-protective hood is suitable for mounting an emergency phone outdoors on a wall or a pole
- Vandal-resistant stainless steel construction
- A variety of signage, graphics and color choices are available



Specifications

Dimensions (W x D x H):	10.5 x 6.5 top [5.0 bottom] x 12.8 in. (267 x 165 top [127 bottom] x 324 mm)
Weight:	13 lbs. (5.9 kg)
Construction:	14GA (.0781 in.) stainless steel
Colors:	Safety Yellow is standard. Available in custom colors.
Signage:	0.75 in. high reflective black "EMERGENCY" lettering with wide-angle visibility is standard. Available as "ASSISTANCE", "INFORMATION", or custom lettering, colors and graphics.
Mounting:	Mounts to a wall; or to a pole using the ETP-PMKT Pole Mount Kit; or to one of the gooseneck pedestals: ETP-GP-C, ETP-GP-D, or ETP-GP-T for stand-alone applications
Compliance:	CSA Certified to UL Standard 60950
Warranty:	2-year warranty

ETP-SMH – Hooded Surface Mount Accessory

Options

ETP-SMH Configuration	Emergency Phone Options	Alternative Surface Mounts
Analog Connectivity	ETP-400 Series Phone	<p>ETP-SM is a standard Surface Mount with no hood or lighting.</p> <p>ETP-SMB Surface Mount includes a door and extra room for handset phones.</p> <p>ETP-SMD Double Surface Mount includes a second opening for a directory or other device.</p> <p>ETP-SML Lighted Surface Mount includes a weather-protective hood and an illuminated translucent emergency sign.</p> <p>ETP-SMCR Card Reader Surface Mount includes an adapter to magnetically isolate a card reader or other device.</p> <p>ETP-SMW is a Surface Mount with extra room for wireless and switched power applications.</p>
IP Connectivity	VOIP-500 Series Phone	

Accessories

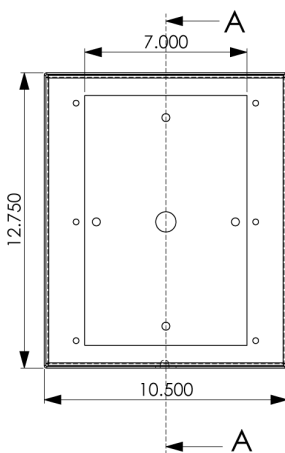
Pole Mounting Kit:

Strapping Tool:

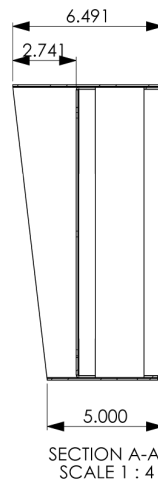
Order **ETP-PMKT** Pole Mounting Kit for strapping ETP-SMH to a pole.

Order **ETP-PMKT-TOOL** Strapping Tool for use with **ETP-PMKT** Pole Mounting Kit.

Dimensional Diagram

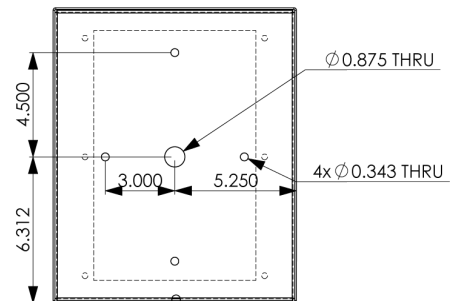


FRONT VIEW

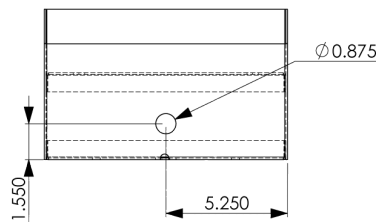


SECTION A-A
SCALE 1 : 4

SIDE VIEW



REAR VIEW



BOTTOM VIEW

All dimensions are in inches and are provided for reference only.

Rev. 10/26/11