

Z-MAX™ 6 UTP OUTLETS

Combining exceptional category 6 performance with best-in-class termination time, the Z-MAX 6 UTP outlet is a vital part of an end-to-end Z-MAX category 6 UTP cabling system.

This exceptional performance is achieved through Z-MAX's innovative Z-TOOL™ termination process, Zero-Cross™ termination module, unique diagonal IDC alignment for internal noise control and advanced tuning capabilities.

For performance greater than Category 6/Class E standards, the Z-MAX 6 outlet may be used with Siemon System 6™ or Premium 6™ UTP cable, MC6™ patch cords and MAX™, HD6™ or Z-MAX patch panels.

PATENT PENDING



WORK AREA

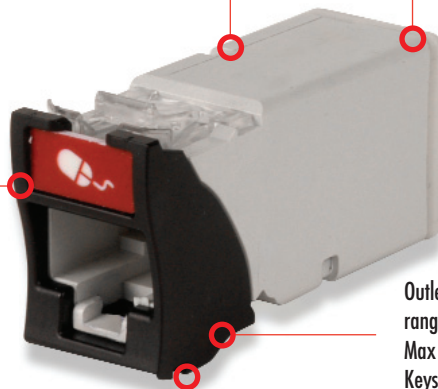
STANDARDS COMPLIANCE

- TIA-568-C.2
- ISO/IEC 11801:Ed 2.2 (Cat6)
- IEEE 802.3af (PoE)
- IEEE 802.3at (PoE+)
- IEC 60603-7
- TIA-968-A (formerly FCC Part 68 Subpart F)

Robust glass-reinforced nylon housing provides durability

Terminates in as little as 60 seconds using the Z-Tool

High visibility colored icons for port identification are provided in a convenient, one-piece frame. Also compatible with outlet door

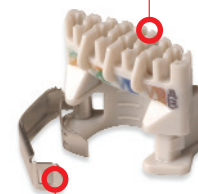


Outlets are available in a wide range of colors and mount in Max faceplates and accessories. Keystone version also available

Pass-through feature allows mounting from either side of a faceplate

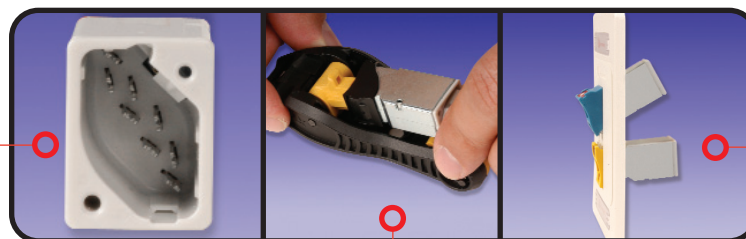
Optional spring loaded door minimizes exposure to dust and other contaminants.

Zero-cross termination module accelerates lacing and eliminates pair crossing



Rapid connection of cable jacket strain relief via integrated hinged metal clip

Diagonal IDC alignment maximizes outlet to outlet pair separation to ensure AXT performance in high density environments



Universal design allows the same outlet to be mounted in flat or angled orientation

The ergonomic and easy-to-use Z-Tool ensures a simple low-force termination

PRODUCT INFORMATION

Performance Specifications:

ELECTRICAL	
Contact Resistance	20 mΩ
Input to Output Resistance	200 mΩ
Min. Dielectric Withstand Voltage (contact to contact)	1000 V DC or AC peak
Min. Dielectric Withstand Voltage	1500 V DC or AC peak
Insulation Resistance	500 MΩ
Compatibility	Backwards to cat 5e and cat 6
Current Rating	1.5 A PoE, PoE +
POE	Suitable for PoE and PoE+
MECHANICAL – GENERAL	
Operating Temperature	-10 to 60 °C (14 to 140 °F)
Flammability Rating	UL 94 V-0
Green Features	RoHS, lead-free, halogen-free, PVC free
Housing Material	Glass-reinforced nylon
Contact Materials	Plated phosphor bronze, stainless steel
Plastic Materials	Flame retardant thermoplastic
Dimensions (LxWxH)	41.2x14.5x21.2mm (1.6x.570x.832 in.)

MECHANICAL – JACK	
Number of Plug Insertion Cycles	2500
Min. Contact Force	50g
Min. Plug Retention Force	50N
Plug Compatibility	Compatible with RJ45 (8-position) or RJ11 (6-position) plugs

MECHANICAL – TERMINATION	
Wire Size Range (nominal)	23-26 AWG solid and stranded
Wire Insulation Diameter Range (max)	1.48mm (0.058)
Conductor OD Size (max)	0.60mm (0.023)
Cable OD (max)	9mm (0.354)
Reterminations	5
Wiring	T568A/B

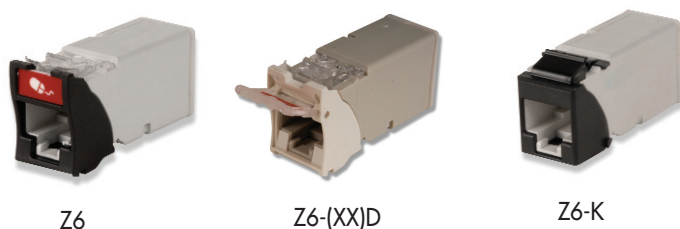
Z-MAX™ UTP Outlets:

Z6-(XX).....Z-MAX 6 UTP module, hybrid (flat/angled)

Z6-(XX)D.....Z-MAX 6 UTP module with door, hybrid (flat/angled)

Z6-K(XX).....Z-MAX 6 UTP module, keystone*

Add "B" to the end of the part number for bulk pack of 100 outlets.



Use (XX) to specify color:

01 = black, 02 = white, 03 = red, 04 = gray, 05 = yellow,
06 = blue, 07 = green, 09 = orange, 20 = ivory,
25 = bright white, 80 = light ivory, 82 = alpine white

The hybrid outlet mounts into MAX® mounting hardware. It includes an icon card consisting of four attached icons: one color-matching, one red, one blue, and one blank icon.

The keystone version is designed for integration with various international mounting products and is not compatible with MAX mounting hardware. The icon is not compatible with keystone outlets.

Keystone module not available with door.

For additional resource information:

Visit our web site at www.simon.com

Because we continuously improve our products, Simon reserves the right to change specifications and availability without prior notice.

North America

Watertown, CT USA
Phone (1) 860 945 4200 US
Phone (1) 888 425 6165 Canada

Europe/Middle East/Africa

Surrey, England
Phone (44) 0 1932 571771

Asia/Pacific

Shanghai, P.R. China
Phone (86) 21 5385 0303

Latin America

Bogota, Colombia
Phone (571) 657 1950