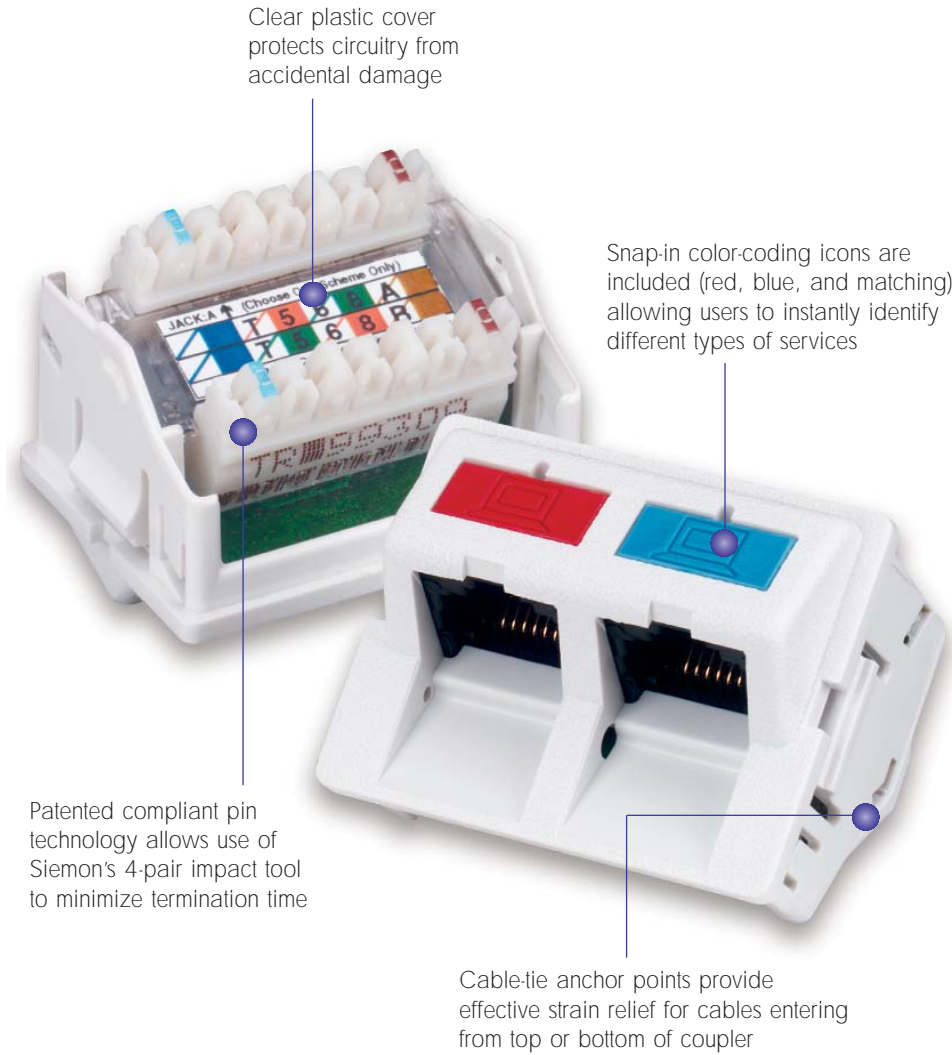


CT[®] 5e COUPLERS

The engineering innovations used in the design of the CT 5e couplers ensure full-featured end-to-end category 5e connectivity. The couplers feature universal T568A/B wiring and comply fully with all applicable ISO and TIA specifications for all pair combinations.



PATENTED

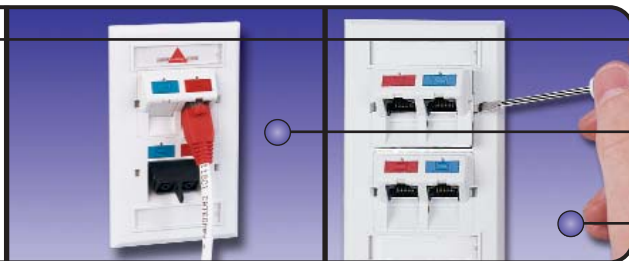
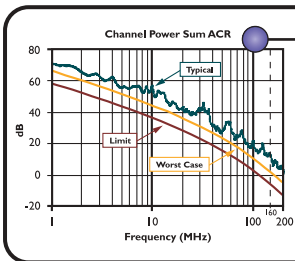


WORK AREA



Angled CT 5e Couplers are available with optional spring doors to protect modular jacks from outside contaminants

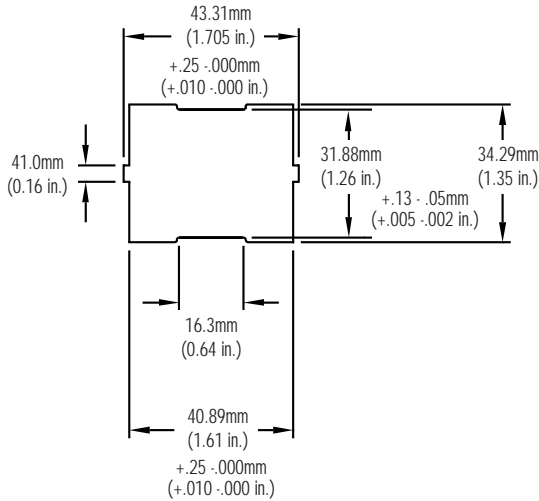
Technical Tip!
Angled couplers are recommended for work area applications and flat couplers for patch panel applications



Patented "reactive balance" technology provides exceptional category 5e transmission performance

Patented gravity-feed design controls bend radius of mated modular cord. The angled shroud protects the connection point from being physically disturbed

Snaps quickly into CT faceplates or patch panels and can be easily removed using a small screwdriver to access terminated cable



Recommended Panel Cutout:
 1.52 ± .08mm or 2.5 ± .08mm
 (.060 ± .003 in. or .100 ± .003 in.) thick

CT® 5e Couplers:

Angled Couplers

- CT-C5-C5-(XX)Angled, double coupler, universal T568A/B wiring
- CT-C5-(XX)Angled, single coupler, universal T568A/B wiring

Flat Couplers

- CT-F-C5-C5-(XX)Flat, double coupler, universal T568A/B wiring
- CT-F-C5-(XX).....Flat, single coupler, universal T568A/B wiring



Use (XX) to specify color: 01=black, 02=white, 04=gray, 20=ivory, 80=light ivory, 82=alpine white
 Add "-D" for spring door option (Angled version only)

Ⓢ Add "B" to end of part number for bulk pack of 100 couplers
 (Bulk option includes couplers and icons only — termination caps and cable ties are available separately)
 Couplers include one color-matching icon (clear for black);
 2 termination caps; and one cable tie per port, plus one red and one blue icon

Accessories:

- CT-ICON-(XX)25 colored icon tabs for couplers (phone on one side, computer on reverse)
- CT-ICON-LBL*10 label sheets for clear tabs that will fit any standard 8.5 x 11 printer, 168 labels per sheet
- TAB-(XX)25 colored blank tabs for couplers
- S110-TC-2P2-pair S110® termination caps, bag of 500
- Use (XX) to specify color: 00=clear (TAB-XX only), 01=black, 02=white, 03=red, 04=gray, 05=yellow, 06=blue, 07=green, 08=violet, 09=orange, 20=ivory, 25=bright white, 60=brown, 80=light ivory
- TW-4102mm (4 in.) cable tie (bag of 1000)
- Ⓢ Add "B" for bulk pack of 100 icons or tabs

Because we are continuously improving our products, The Siemon Company reserves the right to change specifications and availability without prior notice.

CT® and S110® are trademarks of The Siemon Company

For related product information request Spec Sheet(s):

- CT Faceplates (PROD-SS-CFP)
- CT Patch Panel (PROD-SS-CTP)
- CT 6 Couplers (PROD-SS-CT6)
- Termination Tools (PROD-SS-S78)

The Americas
 Watertown, CT USA
 Phone (1) 860 945 4200

Europe/Middle East/Africa
 Surrey, England
 Phone (44) 0 1483 480040

Asia/Pacific
 Shanghai, P.R. China
 Phone (86) 21 6390 6778