

# VersaPOD™ VP2 CABINET

Siemon's new extended-depth VersaPOD VP2 data center cabinet solution is designed to support deeper networking, server and SAN equipment. Like the 1000mm depth VersaPOD VP1, the new 1200mm (48 inch) deep VersaPOD VP2 integrates bayed data center cabinets with Siemon's exclusive ZERO-U vertical patching and cable management capability. The VersaPOD VP2's combination of additional front-to-back cabinet space and space-saving ZERO-U patching is ideal for high-density data center environments, enabling increased cabling and equipment density while providing excellent accessibility and thermal efficiency.

All of the VersaPOD VP2 unique features are integrated into a full-featured modular enclosure that is equally effective as a standalone network and server cabinet or in a multi-unit bayed configuration, offering a simple, scalable expansion path in any data center.

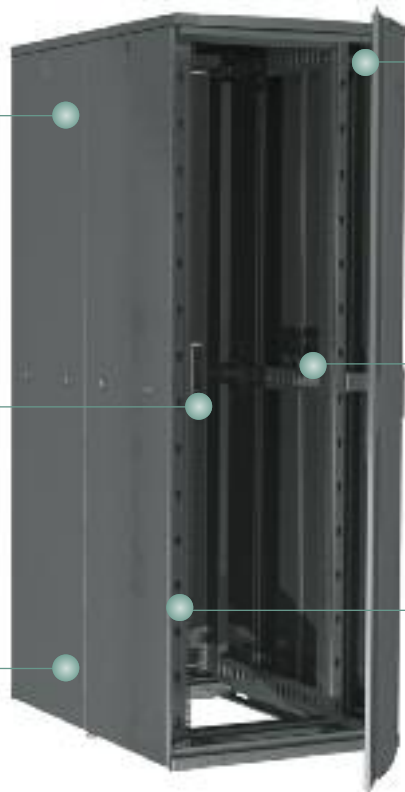
**Extended Depth** - 1200mm depth supports today's deepest IT equipment, such as Cisco's popular Nexus 7000 switch and enables it to be populated in both front and rear, decreasing the number of cabinets required for connectivity and freeing up valuable data center space.

#### Additional Cable Management Space -

Extended depth creates additional vertical cable management space in both the front and rear of the cabinet for efficient management of high-density cabling, eliminating the need for equipment swing arms

#### Locking/Removable Side Panels

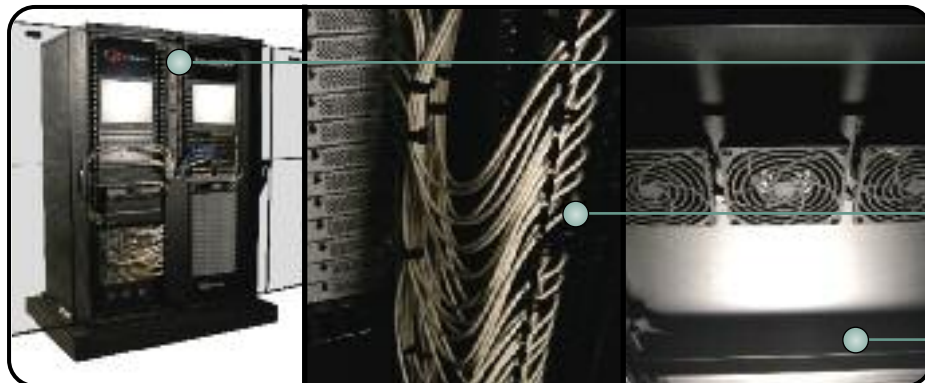
— For stand alone cabinets or end units, vertically split side panels can be easily removed by a single operator removed for full side access



**Innovative Door Options** — Dual hinged front and quad hinged rear doors open from either the left or right and are easily removed. Rear split doors can be hinged open in both directions providing direct access to Vertical Patch Panels and cable management

**Flexible Mounting Options** — CEA-310-E Standard mounting rails are adjustable to fit a wide array of network and storage equipment. Multiple keyhole mounting options and cage nuts further extend the ability to customize the VersaPOD to user requirements

**Recessed Corner Posts** — Four recessed corner posts provide unimpeded cabling access across the entire front, rear and sides of multiple bayed units. With doors and side panels removed, this design provides the same full accessibility as a 4-post open rack.



Vertical copper and fiber patch panels provide up to 24U (12U at front and 12U at rear) of Zero-U vertical patching space between every two cabinets. These panels conveniently slide forward providing access to the connections at the rear of the panel

Vertical cable management fingers can be mounted alongside each VPP to facilitate routing of copper or fiber jumpers between patching fields as well as cabinet to cabinet connections.

Fan kit available separately, can be mounted in the cabinet roof for enhanced air flow. Up to 3 fan kits can be mounted in the VersaPOD VP2

CONNECTING THE WORLD TO A HIGHER STANDARD

WWW.SIEMON.COM



# ORDERING INFORMATION

## VersaPOD™ VP2 Cabinet Base Unit:

VP2-(X)(X)(X)(X)11 . . . . .45 RMS, 762mm x 1200mm Cabinet, Black

### Side Panels

0 = No Side Panels  
1 = 1 Side Panel  
2 = 2 Side Panels

### Front Door

A = Full Vented/Dual Handle  
B = Split Vented/Dual Handle  
C = Split Solid/Dual Handle

### Lock

1 = Keyed Lock  
2 = Tumbler Combination Lock

### Rear Door

A = Full Vented/Dual Handle  
B = Split Vented/Dual Handle  
C = Split Solid/Dual Handle

Includes: 4 leveling feet, 50 cage nuts and 4 stabilizing brackets



## VersaPOD VP2 Cabinet Specifications:

Dimensions	inches	mm	Notes
Height	84	2133	Nominal Height with adjustable leveling feet
Width	30	762	
Depth	48	1200	
Height with Castors	84	2133	
Height on Pallet	89	2261	As delivered on wooden pallet
Product Weight	lbs	kgs	
Cabinet Weight	350	135	
Cabinet Weight w/packing	375	170	Includes wooden pallet and packaging
Load Rating	lbs	kgs	
	2204	1000	Static load, evenly distributed

U Space (rack mount space)	45 U
Base Type	Open
Color	Black
Standard Front Door	Full, dual hinge, perforated, keyed lock
Standard Rear Doors	Split, dual hinge, perforated, keyed lock
Interchangeable Front/Rear Doors	Yes
% Door Perforation	71%
Removable Doors	Yes
Lockable/Removable Side Panels/Vertical Split	Yes
Adjustable Mounting Rails	Yes
U SpaveIdentification on Rails	Yes
Standard Compliance	CEA-310-E
Adjustable Leveling Feet	Yes, sold with cabinet
Stabilizing Brackets	Yes, sold with cabinet, used to secure cabinet to shipping pallet
Cable Access Openings — Roof Sides/Front/Back	8
Cable Access Openings — Roof Center	3
Brush Guards Available	Yes
Fan Kit Available -	Yes

Because we continuously improve our products, Siemon reserves the right to change specifications and availability without prior notice.

VersaPOD™ is a trademark of Siemon

For related product information request Spec Sheet(s):

VersaPOD Panels & Cable Managers (PROD-SS-VPODPANELS)

VersaPOD Accessories (PROD-SS-VPODACCESS)

### The Americas

Watertown, CT USA  
Phone (1) 860 945 4200 US  
Phone (1) 888 425 6165 Canada

### Europe/Middle East/Africa

Surrey, England  
Phone (44) 0 1932 571771

### Asia/Pacific

Shanghai, P.R. China  
Phone (86) 21 6390 6778

### Central & South America

Bogota, Columbia  
Phone (571) 317 2121