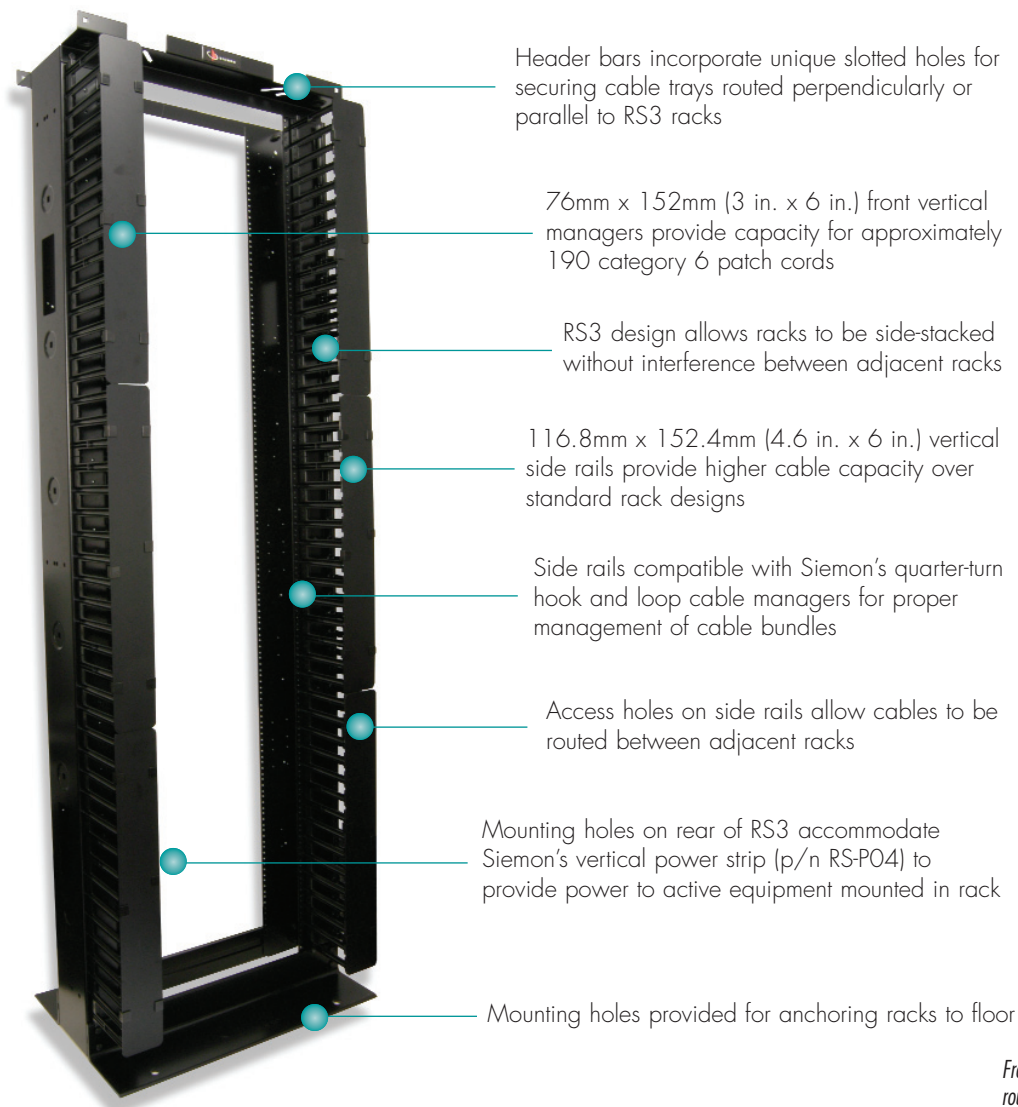


RS3 CABLE MANAGEMENT RACK SYSTEM

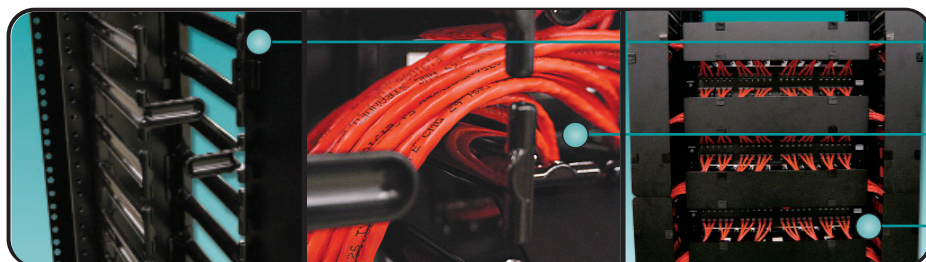
Siemon's RS3 series cable management rack system provides high capacity cable management for routing of both horizontal/backbone cabling and patch cords. Vertical channels with hinged cable manager covers conceal and route patch cables for a clean, professional installation.



Front covers fully conceal all vertical patch cord routing through an easy to use, modular design. Each section can be individually hinged in either direction to facilitate quick and easy changes. Covers include positive securing snap latches for trouble-free fastening

The individual managers on the vertical channels are rounded to allow patch cords to seamlessly enter and exit the managers without risk of cable deformation

Siemon's series horizontal cable managers provide a fully integrated appearance and hinging design for comprehensive management of patch cords



ORDERING INFORMATION

RS3 Cable Management Rack System:

RS3-07 2.1m x 0.48m (7 ft. x 19 in.) aluminum enhanced cable management rack system, 45U. Includes rack assembly hardware, vertical cable management channels with hinged covers, and ground lug

height: 2.1m (7 ft.)
width: 685.0mm (27 in.)
depth: 457.2mm (18 in.)

Add "-S" for steel.

Note: Aluminum racks are intended for use with connecting hardware and cable managers only. For mounting active equipment, steel racks are recommended.

Note: 1U = 44.5mm (1.75 in.)

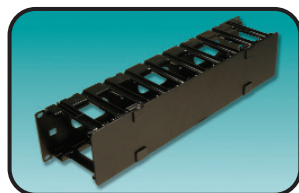


Related Products:

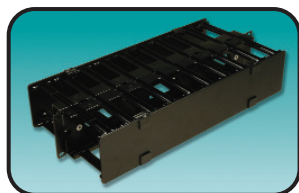
RS3 Series Horizontal Cable Managers

These horizontal cable managers are designed for use with Siemon's RS3 series racks and use the same covered design as the vertical managers. The hinged front cover snaps easily over cable managers and provides a concealed routing patch into the vertical cable management of the RS3, providing a clean patching environment.

RS3-RWM-1 Single-sided 4" fingers, 1U
RS3-RWM-2DS Double-sided 4" fingers, 2U
RS3-RWM-2 Single-sided 4" fingers, 2U
RS3-RWM-6-2 Double-sided 6" fingers, 2U
RS3-RWM-4 Double-sided 4" fingers, 4 RMS
RS3-RWM6-4 Double-sided 6" fingers, 4 RMS



RS3-RWM-2



RS3-RWM-2DS



RS-P04



RS-TRAY

Rack Accessories

RS-P04 Power Strip, North American, (10) 5-15R Receptacles, 5/15P Plug, 15A/120V, Resettable fuse, 1.2m (4ft.) (includes mounting hardware)

RS-TRAY Rack top cable tray [includes roll of 9 black 457.2mm (18 in.) hook and loop cable managers and 9 quarter-turn mounting clips]

The following capacity table is provided for planning purposes. The values shown reflect a combination of actual and calculated capacity and represent a 100% fill. These values were derived using properly dressed cables and can be adversely affected by poor cable routing practices.

PART NUMBER	0.15	0.17	0.19	0.21	0.23	0.25	0.27	0.29	0.31
HORIZONTAL MANAGERS									
RS3-RWM-2	332	258	207	169	141	119	102	88	77
RS3-RWM-2DS	332	258	207	169	141	119	102	88	77
RS3-RWM-1	332	258	207	169	141	119	102	88	77
RS3-RWM6-2	332	258	207	169	141	119	102	88	77
RS3-RWM-4	332	258	207	169	141	119	102	88	77
RS3-RWM6-4	332	258	207	169	141	119	102	88	77
RACKS & VERTICAL CABLE MANAGERS									
RS3 (Channel)	834	649	519	425	354	300	257	223	195
RS3 (Front)	527	410	329	269	224	190	162	141	123

Because we continuously improve our products, Siemon reserves the right to change specifications and availability without prior notice.

North America

Watertown, CT USA
Phone (1) 860 945 4200 US
Phone (1) 888 425 6165 Canada

Europe/Middle East/Africa

Surrey, England
Phone (44) 0 1932 571771

Asia/Pacific

Shanghai, P.R. China
Phone (86) 21 5385 0303

Latin America

Bagota, Colombia
Phone (571) 657 1950