

MAX® PATCH PANELS

MAX patch panels provide a flexible, high density termination solution for the telecommunications room. Using the full line of MAX modules (available separately), the panel can be configured for a variety of multimedia applications. Blank modules can be used to reserve ports for future capacity. When used as a part of System 6 warranty the MAX patch panel supports TSB-155 providing applications assurance for 10GBASE-T up to 55 meters.

PATENTED

MODULAR PATCHING

Panels can be mounted directly to fit a standard 19 inch relay rack or cabinet

Available in 16-, 24-, 48-, and 72-port configurations

Modules utilize Siemon's colored icons for easy identification and administration

Bold port numbering enables quick and ready identification of outlets

Write-on area provided for panel designation

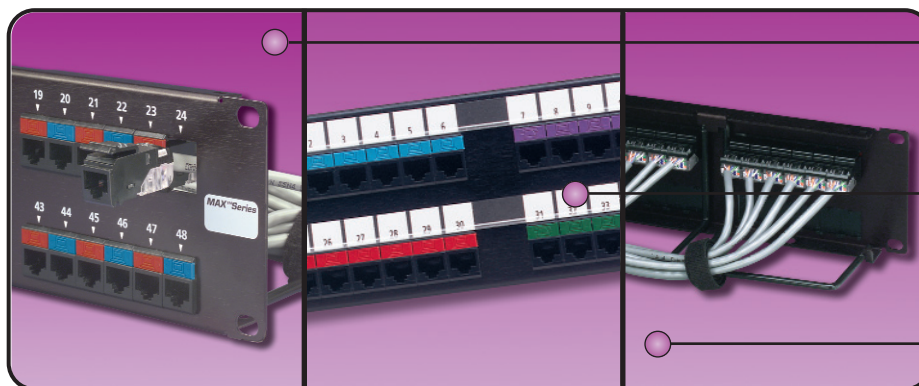
Multimedia capability — mix and match many different types of connectors

High density design accommodates up to 24 ports per RMS
[1 RMS = 44.5mm (1.75 in.)]

Lightweight, high strength brushed aluminum with black protective finish

Technical Tip!

Use flat MAX modules for patch panel applications



Individual modules snap into place from front or rear of panel for added installation flexibility

Removable designation labels can be laser printed and enable proper circuit identification for each port

Rear cable management bar included for routing horizontal cables to terminations

ORDERING INFORMATION

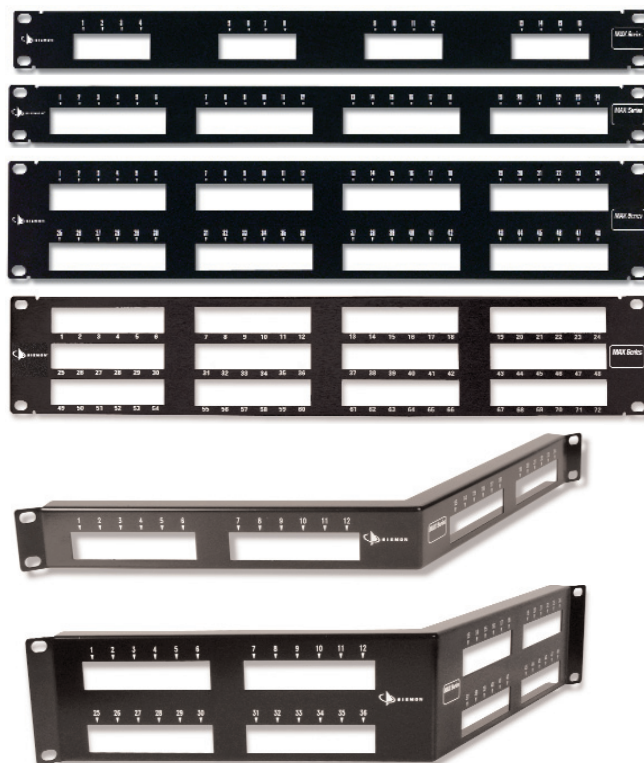
MAX® Series Patch Panels:

MX-PNL-16	16-port panel, 1 RMS
MX-PNL-24	24-port panel, 1 RMS
MX-PNL-48	48-port panel, 2 RMS
MX-PNL-72	72-port panel, 2 RMS

Angled MAX Patch Panels:

Siemon's MAX series angled patch panels route cables directly into the vertical cable managers eliminating the need for horizontal cable management between panels.

MX-PNLA-24	24-port angled panel, 1 RMS
MX-PNLA-48	48-port angled panel, 2 RMS



MAX Panels not compatible with shielded MAX modules. Use the TERA®-MAX panel.
Angled MAX panels are not recommended for use with RS2 or RS3 rack series. Use the RS series racks.
Note: 1 RMS = 44.5mm (1.75 in.)

S89D Bracket:

The MAX S89D offers an economical solution for smaller applications while allowing for a range of different media using the full line of MAX modules.
MX-89D-12.....12-port Max panel mounted on an 89D bracket



Because we continuously improve our products, Siemon reserves the right to change specifications and availability without prior notice.
MAX® and TERA® are trademarks of Siemon

The Americas
Watertown, CT USA
Phone (1) 860 945 4200

Europe/Middle East/Africa
Surrey, England
Phone (44) 0 1932 571771

Asia/Pacific
Shanghai, P.R. China
Phone (86) 21 6390 6778

Japan
Tokyo, Japan
Phone (03) 5437 1580

Labeling Accessories:

MX-PNL-LBL4**	10 sheets of laser printable labels for 16-port MAX panel
MX-PNL-LBL6**	10 sheets of laser printable labels for 24- and 48-port MAX panel

**Visit our web site or contact our Technical Support Department for labeling software.

Reusable Hook and Loop Cable Managers:

VCM-25-(XXX)-(X)Roll of 25 cable managers
VCM-250-(XXX)-(X)Spool of 250 cable managers
Use (XXX) to specify length:
06 = 152mm (6 in.), holds 51mm (2 in.) diameter cable bundle
12 = 305mm (12 in.), holds 102mm (4 in.) diameter cable bundle
18 = 457mm (18 in.), holds 153mm (6 in.) diameter cable bundle
Use (X) to specify color: 1 = black, 2 = white, 3 = red, 4 = gray, 5 = yellow, 6 = blue, 7 = green, 9 = orange

For related product information request Spec Sheet(s):

MAX Modules Tool-less (PROD-SS-MXM)
MAX 5e Module Punch-down (PROD-SS-MPD)
MAX 6 Modules (PROD-SS-MX6)

WWW.SIEMON.COM

ISO 9001
CERTIFIED

ISO 14001
CERTIFIED

