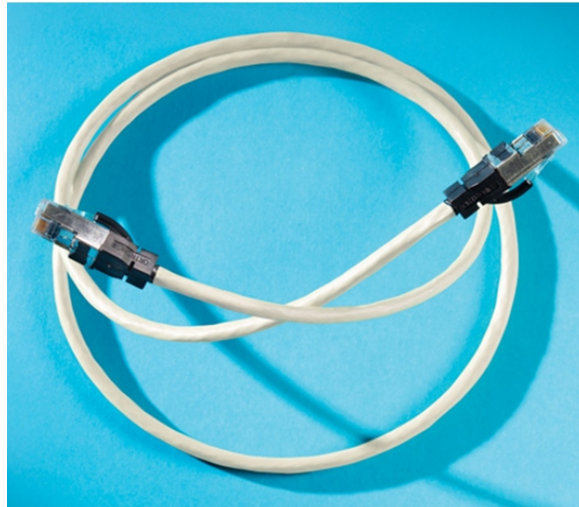


Clarity 6 Shielded Modular Patch Cord, 7', gray

OR-MCS607-08



Clarity 6 Shielded, Modular Patch Cord, gray 7', Category 6, four-pair shielded stranded 27 AWG PVC, center tuned with Clarity 6 shielded connecting hardware to provide a significant elevation of channel performance that can be field measured

features & benefits

- **ETL third party tested and verified to TIA/EIA 568B.2-1 Category 6 component specifications and meets IEC 60603-7-5 (draft) specifications:** Ensures Category 6 component performance.
- **Exceeds ISO 11801 2nd edition including EN50173 2nd edition requirements:** Ensures transfer impedance and shield effectiveness.
- **Each cord is factory tested:** Guarantees every cord shipped meets Category 6 component specifications.
- **Using bi-level contact array:** The plug targets TIA center values.
- **Center tuned technology:** Elevates the performance of Clarity 6 shielded connector union.
- **Snagless plug design:** Protects plugs when pulling through pathways or cable managers.
- **Compatible with both T568A and T568B wiring:** Provides universal wiring ability.
- **Improved signal to noise ratio:** More transparent signal path is field measurable in a link or channel.
- **Backwards compatible to Category 3, 5, and 5e:** Supports lower category installations and components.



specifications

General Info

Cable Type: Four-pair stranded shielded LSOH
Color Cable Jacket: Gray
Termination: 8-Pos Mod

Typical Applications: IEEE 802.3 1000Base-T (Gigabit Ethernet), TIA/EIA-854 1000Base-TX, ATM CB1G

Listing Agencies/Third Party Information

ETL Listing No: 3030592-033A

ETL Standard: Yes

FCC Standard: Yes

Construction Information

Component1: Cable

Component2: Eight-position plug assembly

Component3: Modular plug IDC contacts

Component4: Flexible boot over-molded rubber

Finish Plating3: 50 Micro inch elective gold plating

Material1: 27 AWG, shielded, stranded conductors, LSOH jacket

Material2: Polycarbonate plug housing UL 94V-O with a tin-plated copper shield

Material3: Copper alloy contacts

Material4: Molded Polypropylene Copolymer

Dimensions

Diameter Metric: 5.84 mm

Diameter U S: 0.23"

Length Metric: 2.13 m

Cord Information

Connector Type End One: Plug, eight-contact, shielded, RJ45, high performance

Connector Type End Two: Plug, eight-contact, shielded, RJ45, high performance

Jacket Color: Gray

Jacket Rating: LSOH

Cord Length U S: 7'

Min Bend Radius: 1.00"

Pinning: Straight 1-1, 2-2, 3-3, etc.

Technical Information

Category Rating: Category 6

Ohm Value: 100

Performance Rating: Shielded Category 6

Sort Termination: 3

Wire Gauge: 27 AWG

Buy American Act Compliance

Country of Origin: MEXICO

Buy American Act Status: Trade Agreement Act Compliant