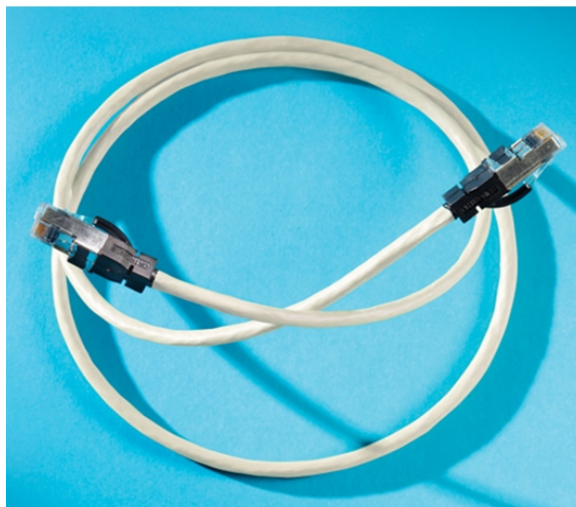


Clarity 5E Shielded Modular Patch Cord, 3', gray

OR-MCS5E03-08



Clarity 5E Shielded Modular Patch Cord, 3', gray

features & benefits



- ETL third party tested and verified to TIA/EIA-568B.2 Category 5e component specifications and meets IEC 60603-7-5 (draft) specifications
- Exceeds ISO 11801 2nd edition including EN50173 2nd edition requirements
- Each cord is factory tested
- Uses bi-level contact array
- Center tuned technology
- Snagless plug design
- Premium conductor cordage
- Compatible with both T568A and T568B wiring
- Improved signal to noise ratio

specifications

General Info

Cable Type: Four-pair stranded shielded LSOH

Color Cable Jacket: Gray

Termination: 8-Pos Mod

Typical Applications: 10Base-T 100Base-TX 1000Base-T 1000Base-TX 155 Mb/s ATM 1 Gb/s ATM (CB1G)

Listing Agencies/Third Party Information

ETL Listing No: 3030592-031A

Construction Information

Component1: Cable

Component2: Eight-position plug assembly

Component3: Modular plug IDC contacts

Component4: Flexible boot over-molded rubber

Finish Plating3: 50 Micro inch elective gold plating over nickel

Material1: 26 AWG stranded conductors, shielded, LSOH jacket

Material2: Polycarbonate plug housing and conductor positioning sled

Material3: Phosphor-bronze contacts

Material4: Molded Polypropylene Copolymer

Dimensions

Diameter Metric: 5.715 mm

Diameter U S: 0.225"

Length Metric: 0.91 m

Cord Information

Connector Type End One: Plug, HSG, eight-contact, RJ45, high performance

Connector Type End Two: Plug, HSG, eight-contact, RJ45, high performance

Jacket Color: Gray

Jacket Rating: LSOH

Cord Length U S: 3'

Min Bend Radius: 1.00"

Pinning: Straight 1-1, 2-2, 3-3, etc.

Technical Information

Category Rating: Category 5e

Ohm Value: 100

Performance Rating: Shielded Category 5e

Sort Termination: 3

Wire Gauge: 26AWG