



Wiremold

## CZE & RFE Series Zone Cabling Enclosures

### Solutions for Ceiling & Raised Floor Zone Cabling Applications in the Workspace

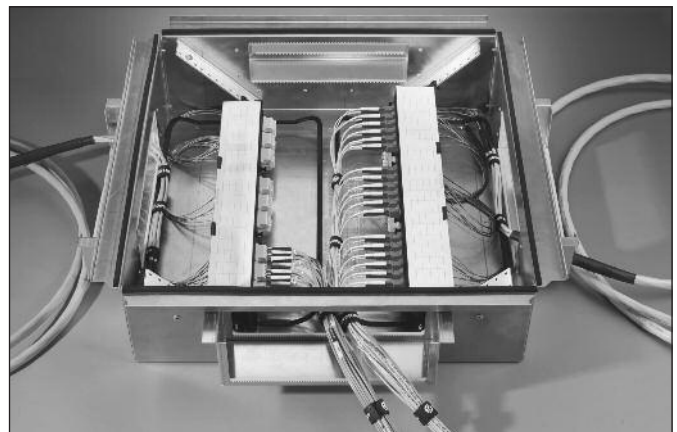
Wiremold® offers a full line of enclosures which support integrated zone systems. These enclosures create an intermediate or remote consolidation point that may be tested and secured prior to adding drops for voice and data outlets. Further, a remote consolidation point or zone enclosure reduces costs associated with moves, adds and changes. These enclosures are plenum rated by UL and may be used in environmental air spaces.

The enclosures also allow the user to save space in tight areas by providing connectivity in a traditional drop ceiling or raised floor. This not only conserves valuable space, but may provide the added benefit of reducing cooling requirements in potentially crowded equipment and data control rooms by moving active equipment to alternate sites. The substantial cost savings incurred by using access points in support of a zone cabling system, make these products a must in all office infrastructure.

Both CZE and RFE Series Enclosures carry the following UL Listings: UL50, UL1863, and UL2043.



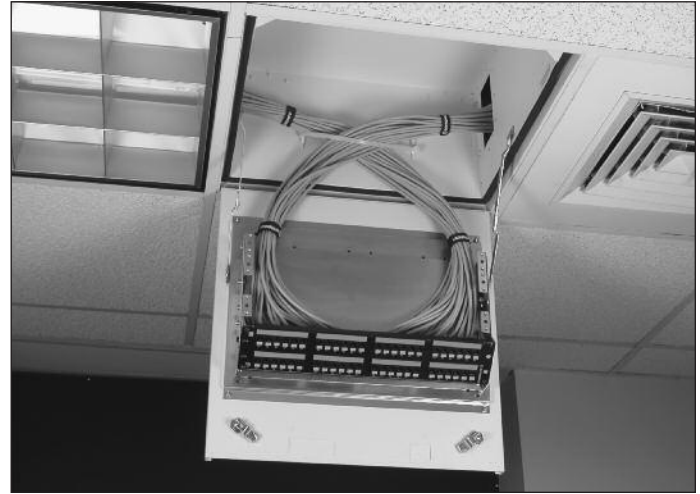
CZE Series Ceiling Enclosure with Ortronics® Patch Panel.



RFE Series Raised Floor Enclosure with Ortronics® Multi-Mode and Single Mode Fiber Adapter Panels.

# CZE Series Ceiling Enclosures

## Zone Cabling Enclosures

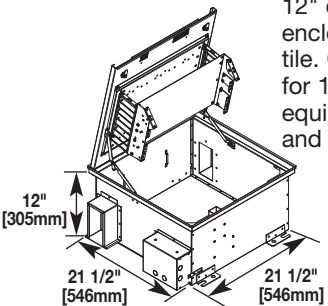
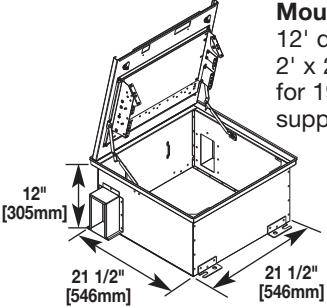
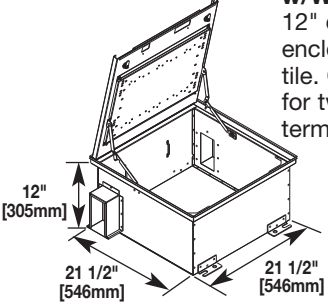


Application in air handling space.

### FEATURES & BENEFITS

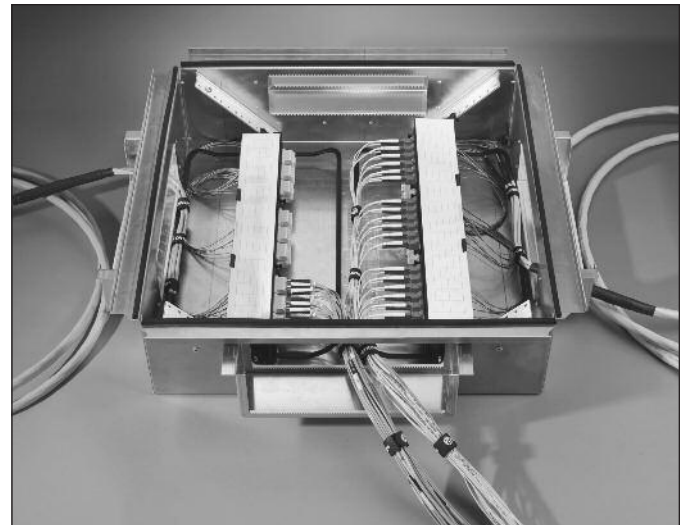
- **Modularity.** Accepts a wide variety of Patch Panels & Wiring Blocks for copper and fiber applications
- **High capacity.** Reduced number of enclosures required.
- **Key locks.** Provide added security.
- **Simplified moves, adds, and changes.** Easy access reduces network downtime and labor costs associated with moves adds and changes.
- **2' x 2' size.** Designed to integrate into standard drop ceiling grids.
- **Customized.** Custom units are available for unique projects with special requirements.

### CZE Series Ceiling Zone Enclosures Ordering Information

Catalog No./Item	Description/Specifications	Catalog No./Item	Description/Specifications
CZE-242412A	<p><b>Ceiling Zone Enclosure For Active Equipment –</b> 12" deep telecommunications enclosure for 2' x 2' drop ceiling tile. One removable 7 RMU bracket for 19" patch panels and equipment. Includes junction box and fan.</p> 	CZE-242412PP	<p><b>Ceiling Zone Enclosure, For Mounting Patch Panels –</b> 12" deep patch panel enclosure for 2' x 2' drop ceiling tile. One bracket for 19" patch panels. Bracket supports 5 RMU.</p> 
CZE-242412WB	<p><b>Ceiling Zone Enclosure w/Wiring Blocks –</b> 12" deep termination block enclosure for 2' x 2' drop ceiling tile. One removable mounting plate for two 300 pair 1100 style termination blocks (without legs).</p> 		

# RFE Series Raised Floor Enclosures

## Zone Cabling Enclosures



Raised Floor Application.

### FEATURES & BENEFITS

- **Customized.** Custom units are available for unique projects with special requirements.
- **Modularity.** Accepts a wide variety of Patch Panels & Wiring Blocks for copper and fiber applications
- **High capacity.** Reduced number of enclosures required.
- **Simplified moves, adds, and changes.** Easy access reduces network downtime and labor costs associated with moves adds and changes.
- **2' x 2' size.** Designed to integrate into standard floor tile openings.

### RFE Sereis Raised Floor Enclosures Ordering Information

Catalog No./Item	Description/Specifications	Catalog No./Item	Description/Specifications
RFE-25256	<p><b>Raised Floor Enclosure For Zone Cabling –</b> Enclosure for 6" deep floor. Two pairs of pivoting mounting rails for 19" patch panels. Rails support 2 RMU each.</p>	RFE-242412	<p><b>Raised Floor Enclosure For Zone Cabling –</b> Enclosure for 14" deep floor. A single mounting rail for 19" patch panels. Rail supports 11 RMU.</p>
RFE-25257RB	<p><b>Raised Floor Enclosure For Zone Cabling –</b> Enclosure for 8" deep floor. Two pairs of pivoting mounting rails for 19" patch panels. Rails support 4 RMU each.</p>		



**Wiremold**

**WIREMOLD**

**U.S. and International:**

60 Woodlawn Street • West Hartford, CT 06110  
1-800-621-0049 • FAX 860-232-2062 • Outside U.S. 860-233-6251

**Canada:**

570 Applewood Crescent • Vaughan, Ontario L4K 4B4  
1-800-723-5175 • FAX 905-738-9721

