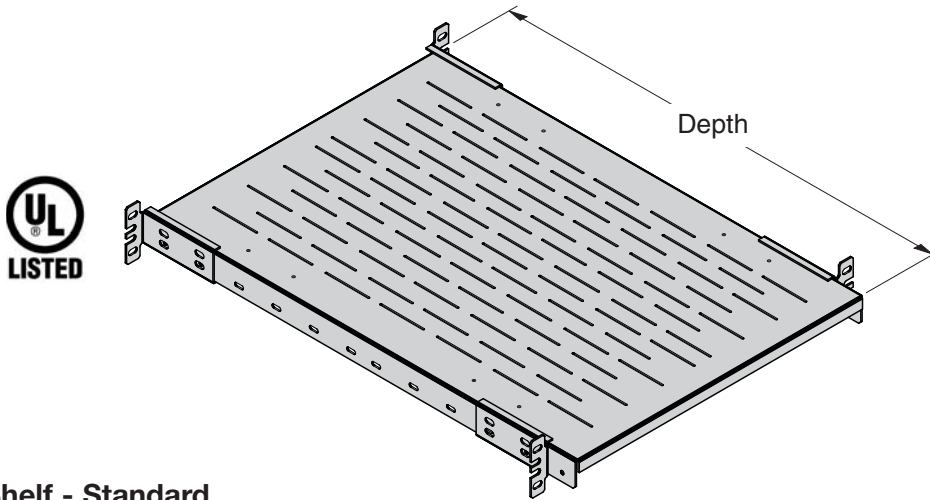


4-Post Rack Shelves - Fixed 19" Rack Mount

- Adjustable shelf mounting brackets offer unlimited placement options.
- Designed with flow through perforations on both sides of the shelf for maximum equipment ventilation.
- Uses one (1) rack mount unit (RMU) of space - 1³/₄" (44.4mm).
- Standard shelf rated for 150 Lb. (68kg) load capacity.
- Heavy duty shelf rated for 350 Lb. (159kg) load capacity.
- E2SHH Series heavy duty shelves UL Listed (File No. E171936) as a communications circuit accessory.
- Includes: #12-24 mounting hardware.
- UL Listed for heavy duty version only.
- Material: 14 Gauge (1.9mm) Steel Sheet
- Finish ___: Flat Black Powder Coat (FB), Telco Gray Powder Coat (TG), or Silver Powder Coat (SL)
- Ordering: Specify part number and finish abbreviation.



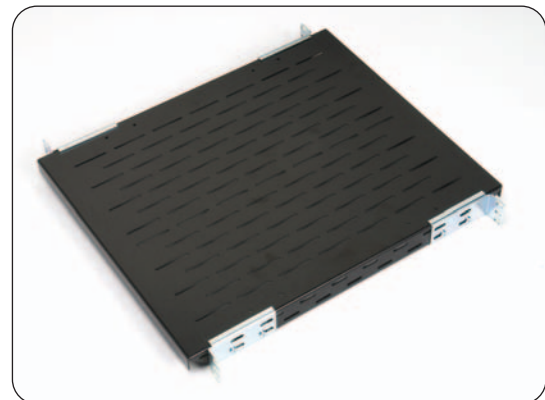
Fixed Shelf - Standard

Part Number	Shelf Depth		Weight	
	In.	(mm)	Lbs.	(kg)
E2SH4P1920__	20"	(508)	12.0	(5.4)
E2SH4P1924__	24"	(610)	14.4	(6.5)
E2SH4P1930__	30"	(762)	18.0	(8.2)
E2SH4P1936__	36"	(914)	21.6	(9.8)



Fixed Shelf - Heavy Duty

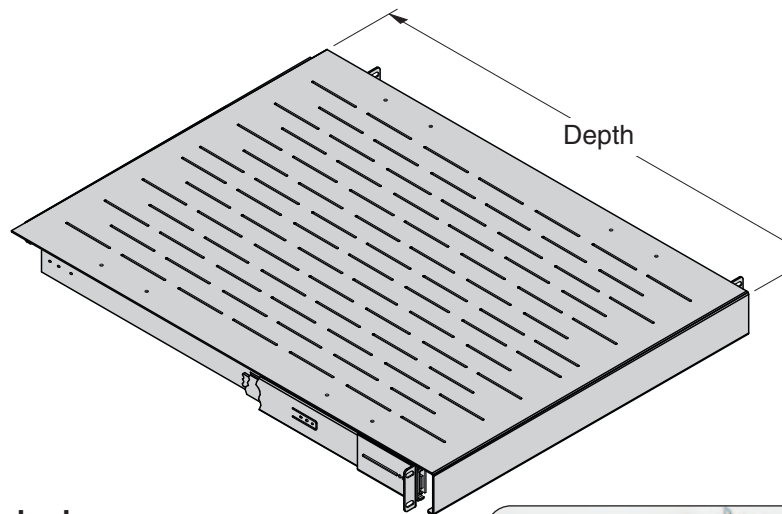
Part Number	Shelf Depth		Weight	
	In.	(mm)	Lbs.	(kg)
E2SHH4P1920__	20"	(508)	14.0	(6.4)
E2SHH4P1924__	24"	(610)	16.8	(7.6)
E2SHH4P1930__	30"	(762)	21.0	(9.5)
E2SHH4P1936__	36"	(914)	25.2	(11.4)



FB is a popular Bee List item

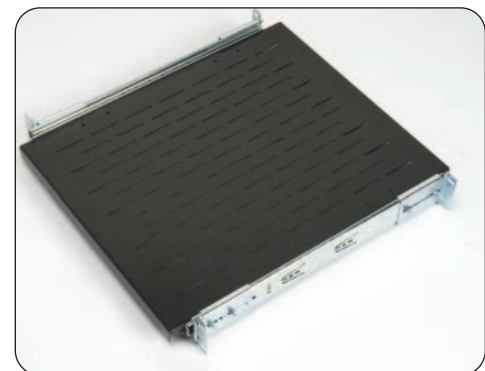
4-Post Rack Shelves - Sliding 19" Rack Mount

- Adjustable shelf mounting brackets offer unlimited placement options.
- Sliding shelves can be fully extended for easy access to equipment.
- Designed with flow through perforations on both sides of the shelf for maximum equipment ventilation.
- Uses one (1) rack mount unit (RMU) of space - 1³/₄" (44.4mm).
- Standard shelf rated for 150 Lb. (68kg) load capacity.
- Heavy duty shelf rated for 200 Lb. (91kg) load capacity.
- Includes: #12-24 mounting hardware.
- Material: 14 Gauge (1.9mm) Steel Sheet
- Finish ___: Flat Black Powder Coat (FB), Telco Gray Powder Coat (TG), or Silver Powder Coat (SL)
- Ordering: Specify part number and finish abbreviation.



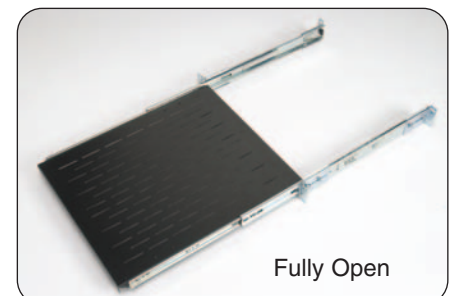
Sliding Shelf - Standard

Part Number	Shelf Depth		Weight	
	In.	(mm)	Lbs.	(kg)
E2SHSS1920__	20"	(508)	13.6	(6.2)
E2SHSS1924__	24"	(610)	16.3	(7.4)
E2SHSS1930__	30"	(762)	20.4	(9.3)
E2SHSS1936__	36"	(914)	21.6	(9.8)



Sliding Shelf - Heavy Duty

Part Number	Shelf Depth		Weight	
	In.	(mm)	Lbs.	(kg)
E2SHHSS1920__	20"	(508)	15.6	(7.1)
E2SHHSS1924__	24"	(610)	18.7	(8.5)
E2SHHSS1930__	30"	(762)	23.4	(10.6)
E2SHHSS1936__	36"	(914)	28.1	(12.7)



FB & AL are popular Bee List items