

ADAPTERS AND COUPLERS

COUPLERS




Used as an in-line device for connecting two modular plug-ended line cords, for extending modular circuits without the hassle and expense of hard-wired connecting blocks.

- Flame-resistant thermoplastic




159MC-4

PART#	DESCRIPTION
159MC-4	4-conductor, coupler, reverse wiring
159MC-6	6-conductor, coupler, reverse wiring
COLOR:	 Ivory

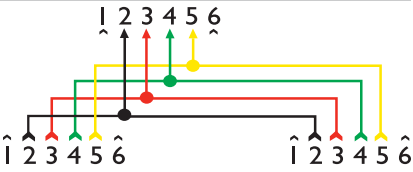


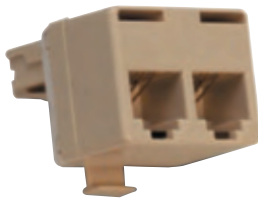
159MC-8A

PART#	DESCRIPTION
159MC-8A	8-conductor, coupler, straight through wiring
159MC-8B	8-conductor, coupler, reverse wiring
COLOR:	 Gray

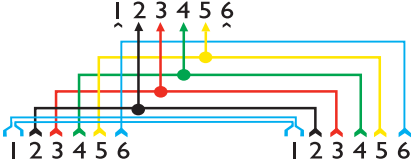
MODULAR "T" ADAPTERS

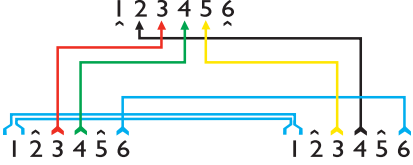


PART#	DESCRIPTION	DIAGRAM
267A4	"2 for 1" adapter - designed for connecting two telephones or equipment to an existing modular jack.	



267 Series

267A6	Similar to 267A4 - 2 additional contacts are wired parallel to each other in the jack but are not connected to the 4 conductor plug.	
--------------	--	---

267B	Used for connecting two telephones and/or ancillary devices to separate outside lines through a single 4 contact jack wired for termination of two lines.	
-------------	---	---

COLOR:  Ivory