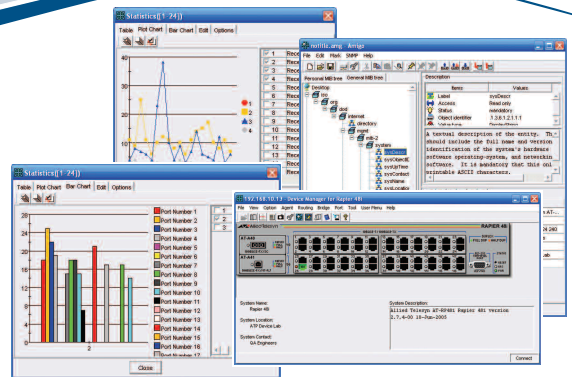


ALLIEDVIEW™-EMS

Network Device Management Software



AlliedView-EMS 4.0.4

Network Device Management Software

Ease of Use

With AlliedView-EMS, you can view details of all the managed Allied Telesis products on your network from a user-friendly, window-based interface. Display the physical view of a device and see color-coded port and module configurations, click on a port to display its communication statistics or even change device settings to improve data flow. All in a matter of minutes, all in an intuitive graphical environment.

Automated Response

With RMON support for Statistics, History, Alarm and Event, it has never been easier to proactively monitor your network. Chart line traffic usage, packet size class, error packet classifications and more to analyze your network's health in real-time and optimize its performance.

Remote Management

To truly manage your network, device monitoring is only half the battle. With AlliedView-EMS, you can configure any supported SNMP Management Information Base (MIB) variable such as full/duplex settings, IP routing, and more.

Flexibility

Java-based AlliedView-EMS has been designed to run in both Unix and Windows environments, either as an add-on to network management solutions for large networks, or as a standalone application for smaller ones.

AlliedView-EMS is a Java-based network device management solution from Allied Telesis. Whether managing a large network distributed across multiple sites, or small networks with only a handful of nodes, AlliedView-EMS provides the tools needed to effectively monitor and proactively manage Allied Telesis' intelligent networking products.

Lower Cost of Ownership

The ultimate value of AlliedView-EMS lies in lowering the Total Cost of Ownership (TCO) of your network. Drive down your network management costs by leveraging the monitoring, analysis and configuration tools. Reduce your downtime costs by identifying problems quickly. Finally, minimize your training costs by taking advantage of AlliedView-EMS' platform independence; interoperability with HP OpenView, Tivoli NetView and SNMPc; and an intuitive, easy-to-understand graphic interface.

Key Features

- Intuitive graphical interface
- Drill-down functionality
- GUI snapshot utility
- RMON 4 group support
- Supports NMS alarms
- Supports SNMP v1, v2c and v3
- VLAN management
- QoS management
- Multi-platform
- HP OpenView, Tivoli NetView and SNMPc interoperability
- Supports Allied Telesis managed devices

Free 45-Day Trial

To receive a free 45-day evaluation copy of AlliedView-EMS, visit www.alliedtelesis.com today.

System Requirements

Windows 2000 (SP3 or later)

Windows XP (SP1 or later)

Windows 2003

64MB RAM (128MB+ recommended)
240MB disk space during installation
120MB disk space during operation
166MHz Pentium-compatible processor
(400MHz+ recommended)

Sun OS 5.8/Solaris 8

128MB RAM (256MB recommended)
275MB disk space during installation
145MB disk space during operation
15MB minimum swap partition
Ultra 10 or higher processor

HP-UX 11

128MB RAM (256MB recommended)
435MB disk space during installation
220MB disk space during operation
15MB minimum swap partition
HP 9000 workstations
HP Visualize workstations

Display:

1024 x 768 or above
(64K colors or more)

NMS platforms supported:

HP OpenView Network Node Manager
6.20, 7.0
Castle Rock SNMPc 7.1
Tivoli NetView 7.1.3

Devices Supported

Device support is updated frequently, please contact your Allied Telesis sales representative or visit www.alliedtelesis.com to get all the latest updates.

Routers

AT-AR410
AT-AR415S
AT-AR440S
AT-AR441S
AT-AR442S
AT-AR450S
AT-AR745
AT-AR745 (-48vDC)
AT-AR750S
AT-AR750S-DP
AT-AR770S

Layer 2 Switches

AT-8000/8POE
AT-8000GS/24
AT-8000GS/24POE
AT-8000GS/48
AT-8000S/16
AT-8000S/24
AT-8000S/24POE
AT-8000S/48
AT-8000S/48POE
AT-8012M
AT-8012M-QS
AT-8016F/MT
AT-8016F/SC
AT-8016F/ST
AT-8024
AT-8024GB
AT-8024M
AT-8026FC
AT-8026T
AT-8088/MT
AT-8088/SC
AT-8326GB
AT-8350GB
AT-8400
AT-8403
AT-8411
AT-8412/MT
AT-8412/SC
AT-8413GB/T
AT-8414/SC
AT-8414/ST
AT-9000/24
AT-9000/28
AT-9000/28SP
AT-9000/52
AT-9006SX/SC
AT-9006T
AT-9410GB
12 slot chassis
AT-8400 fan tray
8 port (RJ-45) line card
4 port (MT-RJ) line card
4 port (SC) line card
2 port (GBIC/RJ-45) line card
4 port (SC) line card
4 port (ST) line card

Layer 2+ Switches

AT-8516F/SC
AT-8524M
AT-8524POE
AT-8550GB
AT-8550SP
AT-8724XL
AT-8724XL (-48vDC)
AT-8748XL
AT-8748XL (-48vDC)
AT-9408LC/SP
AT-9424T/GB
AT-9424T/SP

Layer 3 Switches

AT-8624POE
AT-8624T/2M
AT-8648T/2SP
AT-8824
AT-8848
AT-9424T
AT-9424T/POE
AT-9424TS
AT-9424TS/XP
AT-9448T/XP
AT-9448TS/XP
Rapier 16Fi/MT
Rapier 16Fi/SC
Rapier 24i
Rapier 48i
Rapier 48w
Rapier G6
Rapier G6FLX/SC
Rapier G6FSX/MT-RJ
Rapier G6FSX/SC

Layer 3+ Switches

AT-8948
AT-9724TS
AT-9748TS/XP
AT-9924SP
AT-9924T
AT-9924T/4SP
AT-9924TS
AT-x600-24TS
AT-x600-24TS/POE
AT-x600-24TS/POE+
AT-x600-24TS/XP
AT-x600-48TS
AT-x600-48TS/XP
AT-x900-12XT/TS
AT-x900-24XS
AT-x900-24XS
AT-x900-24XT
AT-x900-24XT
AT-x900-24XT-N
AT-x900-24XT-N
AT-x900-48FE
AT-x900-48FS
SwitchBlade® x908
(AlliedWare®)
(AlliedWare Plus™)
(AlliedWare)
(AlliedWare Plus)
(AlliedWare)
(AlliedWare Plus)

Layer 3/4 Switches

AT-9812T
AT-9812T (-48vDC)
AT-9812TF
AT-9816GB
AT-9816GB (-48vDC)
AT-9816GF

Layer 4+ Switches

AT-SB4104
AT-SB4104 (-48vDC)
AT-SB4108
AT-SB4108 (-48vDC)
AT-SB4151
AT-SB4152
AT-SB4211
AT-SB4215
AT-SB4311
AT-SB4352
AT-SB4411
AT-SB4412
AT-SB4441
AT-SB4442
AT-SB4451
AT-SB4452
AT-SB4461
AT-SB4462
AT-SB4541
4 slot AC chassis
4 slot DC chassis
8 slot AC chassis
8 slot DC chassis
Fan tray for 4 slot model
Fan tray for 8 slot model
Switch controller
Bandwidth expander (4 slot model only)
48 port 10/100TX (RJ-45) line card
32 port 100FX (MT-RJ) line card
8 port 10/100/1000T (RJ-45) line card
24 port 10/100/1000T (RJ-45) line card
8 port 1000X (GBIC) line card
24 port 1000X (SFP) line card
8 port 1000SX (SC) line card
8 port 1000SX (MT-RJ) line card
8 port 1000LX (SC) line card
8 port 1000LX (MT-RJ) line card
1 port 10GBASE-R line card

Media Converters

AT-CV1200
AT-CV1203
AT-CV5000
AT-CM201
AT-CM202
AT-CM202/1
AT-CM202/2
AT-CM212A/1
AT-CM212B/1
AT-CM2K05
AT-CM705
AT-CV101
AT-CV102
AT-CV102/1
AT-CV102/2
AT-CV1K55
AT-MCF2000
AT-MCF2012LC
AT-MCF2012LC/1
AT-PBC18
AT-PB13
AT-PB14
AT-PB15
AT-PB101
AT-PB102
AT-PB103/1
AT-PB103/2
AT-PB201
AT-PB202
AT-PB202/1
AT-PB202/3
AT-PB202/4
AT-PB301
AT-PB1001/1
AT-PB1001/3
AT-PB1005G
Converteam™ 2-slot chassis
Converteam 2-slot Chassis
Converteam 18-slot chassis
10/100TX - 100FX
10/100TX - 100FX
10/100TX - 100FX
10/100TX - 100FX
10/100TX - 100FX
10/100TX - 100FX
10/100TX - 100FX
10/100/1000T - 1000FX
T1/E1 + 10/100TX
100TX - 100FX
100TX - 100FX
100TX - 100FX
100TX - 100FX
1000FX - 1000FX
Multi-channel 2-slot chassis
10/100TX - 100FX
10/100TX - 100FX
PowerBlade 18-slot chassis
PowerBlade media converter module
PowerBlade media converter module
PowerBlade media converter module
PowerBlade media converter module
PowerBlade media converter module
PowerBlade media converter module
PowerBlade switch module
PowerBlade switch module
PowerBlade switch module
PowerBlade switch module
PowerBlade switch module
PowerBlade media converter module
PowerBlade media converter module
PowerBlade media converter module
PowerBlade media converter module

Gigabit Interface Converters (GBICS)

AT-G8 series
AT-SP series
AT-XP series

Optional Gigabit Expansion Modules (Uplink Modules)

AT-A35LX/SC
AT-A35SX/SC
AT-A39T
AT-A42/GBIC
AT-A46
AT-A47
AT-A60
AT-A61
AT-A62
AT-XEM-125
AT-XEM-12T
AT-XEM-1XP
AT-XEM-2XP
AT-XP9700

Port Interface Cards (PICs)

AT-AR020
AT-AR021S
AT-AR021U
AT-AR022
AT-AR023
AT-AR024
AT-AR026
AT-AR027

Network Service Modules (NSMs)

AT-AR040
AT-AR041
AT-AR042

Optional Fast Ethernet Expansion Modules (Uplink Modules)

AT-A40/MT
AT-A40/SC
AT-A41/MT
AT-A41/SC
AT-A45/MT
AT-A45/SC
AT-A45/SC-SM15

Power Accessories

AT-PBPVRAC
AT-PVVR10
AT-PVVR11
AT-PVVR14
AT-PVVR3004
AT-PVVR3104
AT-PVVR3204
AT-PVVR8000
AT-PVVR9700
AT-RPS3004
AT-RPS3104
AT-RPS3204
AT-RPS8000
AT-RPS9000
AT-RPS9700

Management Modules

AT-8401	For AT-8400 chassis
AT-CV5M01	For AT-CV5000
AT-CV5M02	For AT-CV1200 and AT-CV5000
AT-MCF2000M	For AT-MCF2000
AT-PBM02	For AT-PBC18 chassis
AT-SB4211	For SB4000 series chassis

Stacking Modules

AT-STACK8
AT-STACKM
AT-STACKXG
AT-XEM-STK

Ordering Information

AT-AV-EMSV4-WINDOWS

AlliedView-EMS v4 for Windows
Order number: 980-000147

AT-AV-EMSV4-HP-UX

AlliedView-EMS v4 for HP-UX
Order number: 980-000148

AT-AV-EMSV4-SOLARIS

AlliedView-EMS v4 for Solaris
Order number: 980-000149

USA Headquarters | 19800 North Creek Parkway | Suite 100 | Bothell | WA 98011 | USA | T: +1 800 424 4284 | F: +1 425 481 3895

European Headquarters | Via Motta 24 | 6830 Chiasso | Switzerland | T: +41 91 69769.00 | F: +41 91 69769.11

Asia-Pacific Headquarters | 11 Tai Seng Link | Singapore | 534182 | T: +65 6383 3832 | F: +65 6383 3830

www.alliedtelesis.com

© 2011 Allied Telesis Inc. All rights reserved. Information in this document is subject to change without notice. All company names, logos, and product designs that are trademarks or registered trademarks are the property of their respective owners.

617-00552 Rev. U