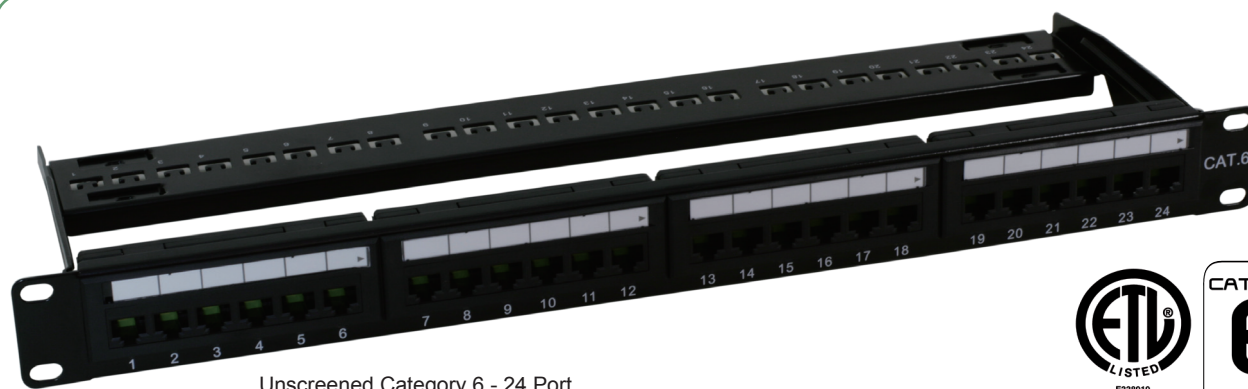


Unscreened Category 6 RJ-45 Patch Panel Range



Unscreened Category 6 - 24 Port



Optronics Category 6 patch panel range exceeds the transmission line performance requirements of IEC and TIA for CLASS E/Category 6 systems. The products are designed for mechanical and electrical reliability, using quality materials and processes, to deliver a panel solution which delivers a consistent high level of systems performance, whilst affording the installer a time saving advantage.

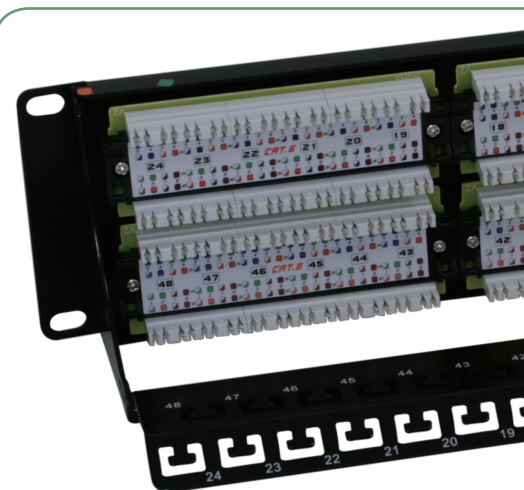
Each Category 6 patch panel comply with the requirements of ISO/IEC 11801 (2nd Edition): 2010 and support all applications designed for CLASS E/Category 6 applications including ATM 1200, 1000BASE-T (Gigabit Ethernet) and 1G FCBASE-T.

Features/Benefits

- > Class E/Category 6 standards compliant
- > Electrically compliant beyond 250MHz
- > 19" rack mountable
- > 6 - port RJ-45 modules
- > Individual port identification
- > Integral label feature
- > Universal wiring blocks for easy termination
- > Terminates 22AWG to 26AWG cables
- > Supports TIA 568 A & B wiring configurations
- > Colour coded wiring blocks for easy cable lacing
- > Rear cable management bar
- > Durability:
 - Socket Contacts: 750 plug insertion cycles minimum
 - Wiring block: 25 termination cycles minimum
- > Earthing kit and cage nuts included as standard
- > RoHS compliant 2002/95/EC
- > REACH / SVHC compliant regulation (EC) No. 1907/2006
- > Part of the 20 year Optronics systems warranty programme



Unscreened Category 6 - 48 Port



Ordering Information

DESCRIPTION	COLOUR	HEIGHT	PART NO.
Unscreened Category 6 - 24 Port	Black	1U	600-001
Unscreened Category 6 - 48 Port	Black	2U	600-002