



PoE Rated to 4X IEEE 802.3af.

Gigabit Ethernet Qualified.

Category 5e Component Compliant.

Third-Party Verified Performance.

Easy, Inline Paired Termination.

#### FEATURES

- Exceeds ANSI/TIA/EIA-568-B.2 Category 5e component standards.
- Third-Party verified component compliant.
- Interoperable and backward compatible to lower performing cabling systems

#### SPECIFICATIONS

- ◆ 14 ga. steel rolled-edge construction.
- ◆ Durable, powder coat finish.
- ◆ Nose contact material: Beryllium copper with a minimum of 50 micro-inch Gold plating over nickel underplating.
- ◆ 2000+ mating cycles with FCC 8-position plug.
- ◆ Dimensions and mounting holes per EIA-310-D.
- ◆ Towers: Flame retardant UL 94V-0.
- ◆ Contacts: high performance copper with tin-lead plating.
- ◆ Terminates 22-26 AWG solid conductors.
- ◆ Compatible with all industry 110 impact tools.
- ◆ Fully enclosed protected PCB circuitry.
- ◆ Jack housing: Flame retardant UL 94V-0.
- ◆ Rated for 750 plug insertions.

#### STANDARDS/LISTINGS/VERIFICATIONS

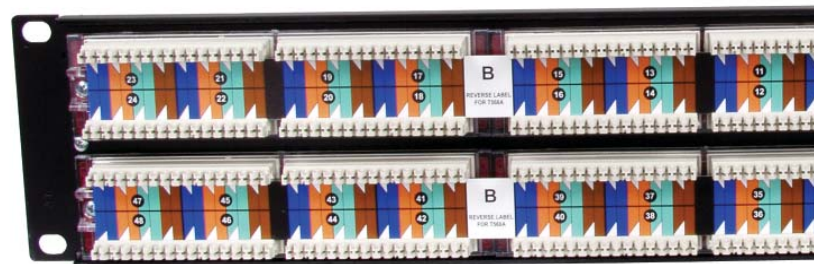
- ANSI/TIA/EIA-568-B.2 Category 5e component compliant.
- UL and cUL.
- IEEE 802.3af DTE Power and MDI verified.
- IEEE 802.3ab 10-Gigabit Ethernet verified.
- UL Listed 1863.
- FCC part 68.5, subpart F compliant.
- IEC-603-7 compliant.
- ISO 11801 Class E compliant.

## HUBBELL SpeedGain Patch Panels, Category 5e

Exclusive panel ID label holders

Icon compatible

Centered port identification



Inline paired punch down sequence

Universal wiring

Wide IDC spacing increases room for lacing and termination

**SPEEDGAIN®** patch panels offer the most rugged, feature rich, and high performance Category 5e panels in the industry. **SPEEDGAIN®** panels significantly exceed ANSI/TIA/EIA-568-B.2 Category 5e requirements with component and channel performance to 190MHz.

**SPEEDGAIN®** panels utilize a rugged rolled edge construction to provide superior panel rigidity and a clear plastic shroud to protect PCB from contaminants and errant terminations. A full series of pre-printed identification products are available as well as Hubbell Labeling Software and laser printable sheets for generating custom port labels.

#### APPLICATIONS SUPPORTED

- ▲ Gigabit Ethernet 1000BASE-TX.
- ◆ 10/100/1000 BASE-T.
- ◆ IEEE 802.3ab (<1 \*10<sup>-10</sup>) Gigabit Ethernet Verified.
- ◆ IEEE 802.3af DTE Power compliant.
- ◆ 155/622 Mbps ATM.
- ◆ Analog voice and digital voice (VoIP).
- ◆ Analog (broadband, baseband) and digital video.
- ◆ 100 Mbps TP-PMD.
- ◆ 4/16 Mbps Token Ring.

**ORDERING INFORMATION**

**SPEEDGAIN® Universal Patch Panel, Category 5e**

**Order Information**

Delivery: 1 Category 5e patch panel, Universal wiring insert, Clear plastic label holders, 1 kit of mounting hardware.

Ports	Height	Rack Units	Black Catalog No.	White Catalog No.	Black, Angled Catalog No.
16	1.75" (45)	1	<b>P5E16UE</b>	-	-
24	1.75" (45)	1	<b>P5E24UE</b>	<b>P5E24UEW</b>	<b>P5E24AU</b>
48	3.50" (89)	2	<b>P5E48UE</b>	<b>P5E48UEW</b>	<b>P5E48AU</b>
96	7.00" (178)	4	<b>P5E96UE</b>	<b>P5E96UEW</b>	-



P5E24UE



P5E48UE

**ACCESSORIES**

**1-Punch Panel Termination Tool**



TX4PP

Description	Catalog No.
1-Punch panel tool with head and blades	<b>TX4PP</b>
1-pair punch-down tool blade	<b>TBDXJ</b>

**Rear Cable Management Bars**



PCBLMGT

Description	Catalog No.
Clips to rear of panels	<b>PCBLMGT</b>
Screws to rear flange of 19" rack	<b>MCCSWB19</b>

**Hubbell Labeling Solutions**

Use with Hubbell Labeling Software available on-line at [www.hubbell-premise.com](http://www.hubbell-premise.com)



Description	Catalog No.
Patch Panel Labels, 8-Port, laser-printable, adhesive Paper (use w/plastic holders supplied with panel)	<b>XPLPPA10W</b> <b>XPLPP10W</b>
Patch Panel ID Labels, Laser Printable (Pack of 10) Paper (use with vertical ID label holders on panel)	<b>XPLPPID10W</b>
Extra Paper Label Holders	
8-port clear plastic paper holders (Pack of 50)	<b>XPHPP50</b>
1U panel ID label holders (Pack of 10)	<b>XPHPPID1U10</b>
2U panel ID label holders (Pack of 10)	<b>XPHPPID2U10</b>

**RELATED PRODUCTS**

**XCELERATOR™ Jacks, Category 5e**

Unit Package: 1 per Bag. Order Qty.: Carton of 25

Catalog No. **HXJ5EXX**

XX = Color:

- 'AL' = Almond
- 'B' = Blue
- 'BK' = Black
- 'EI' = Electric Ivory
- 'GL25' = Gold\*
- 'GY' = Gray
- 'GN' = Green
- 'OW' = Office White
- 'OR' = Orange
- 'P25' = Purple\*
- 'R' = Red
- 'TI' = Telco Ivory
- 'W' = White
- 'Y' = Yellow

\* 25-packs only.



**SPEEDGAIN® UTP Cable, Category 5E, 4-Pair**



Color	Catalog No. Spool	Riser REELEX*	Catalog No. Plenum Spool	REELEX*
Blue	<b>C5EPSRB</b>	<b>C5EPRRB</b>	<b>C5EPSPB</b>	<b>C5EPRPB</b>
Gray	<b>C5EPSRGY</b>	<b>C5EPRRGY</b>	<b>C5EPSPGY</b>	<b>C5EPRPGY</b>
White	<b>C5EPSRW</b>	<b>C5EPRRW</b>	<b>C5EPSPW</b>	<b>C5EPRPW</b>
Yellow	<b>C5EPSRY</b>	<b>C5EPRRY</b>	<b>C5EPSPY</b>	<b>C5EPRPY</b>

\* REELEX is licensed and patented by Windings Inc.

**SPEEDGAIN® Universal Patch Cords, Category 5e**

Delivery: 1 patch cord

Catalog No. **PCX5EXX\***

XX = Standard Color:

- 'B' = Blue; 'BK' = Black;
- 'GY' = Gray; 'Y' = Yellow

For other colors replace color designation with one of the following:  
OR = Orange, R = Red, GN = Green, P = Purple, W = White

\* = Standard Length:

- '01'=1'; '03'=3'; '05'=5'; '07'=7'; '10'=10'; '15'=15'; '20'=20';
- '25'=25'; '30'=30'; '35'=35'; '40'=40'; '45'=45'; '50'=50';
- '55'=55'; '60'=60'; '75'=75'; '100'=100'



**Hubbell Premise Wiring**

HUBBELL INCORPORATED (Delaware)

14 Lord's Hill Road • Stonington, CT 06378-0901 • (860) 535-8326 • 800-626-0005

Fax: (860) 535-8328 • Internet site: <http://www.hubbell-premise.com>

**Worldwide Locations**

Hubbell Premise Wiring, Asia Pacific	852-2836-7131	Fax: 852-2836-7132
Hubbell Canada Inc.	905-839-1138	Fax: 905-839-9108
Hubbell Premise Wiring, Central America	506-309-4158	Fax: 506-260-1616
Hubbell Premise Wiring, China	8621-6309-0119	Fax: 8621-6309-0122
Hubbell Premise Wiring, Colombia	571-245-8940	Fax: 571-340-0925
Hubbell Premise Wiring, Europe	44-01283 500500	Fax: 44-01283 500400
Hubbell Int'l. Inc., Korea Branch	82-2-(0)2607-1363	Fax: 82-2-(0)2603-7386

Hubbell Premise Wiring, Latin America	305-408-4501	Fax: 305-408-8201
Hubbell de Mexico, S.A. de C.V.	(5255) 9151-9999	Fax: (5255) 9151-9989
Hubbell Premise Wiring, Middle East	971-4-393-4192	Fax: 971-4-393-4194
Hubbell-Taian Co., Ltd., Taiwan	886-2-2522-1862	Fax: 886-2-2522-1872
Hubbell Premise Wiring, Turkey	90-216-313-5016	Fax: 90-216-414-8148
Hubbell Premise Wiring, Venezuela	58-416-680-7453	Fax: 58-281-274-7900