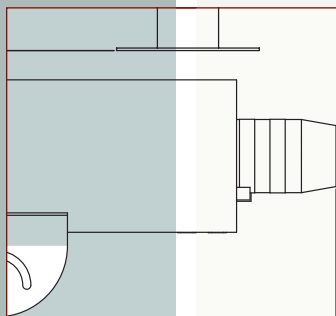
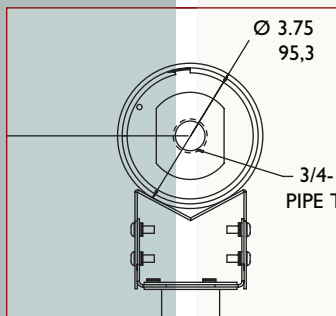
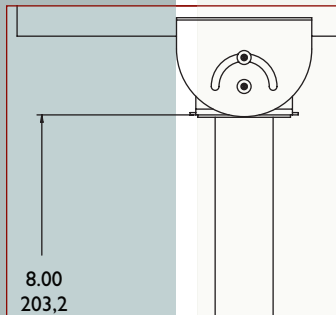




- **Stainless Steel Construction**
- **Excellent Protection Against Dust & Water**
- **Optional Built-in Window Heater/Defogger**
- **Pressurization Model Option**

Stainless Steel Outdoor Housings



HS9383S Series

The HS9383S Stainless Steel Series Housings are designed to protect a camera and lens from extreme environments. These sealed housings are constructed of 300 grade stainless steel and can withstand a variety of harsh chemicals employed in manufacturing and food processing facilities as well as salt water environments. The enclosure includes a mounting cradle that can be rotated 360 degrees to square the camera when wall mounting. The front cap contains a glass viewing window with an integrated heater option that minimizes fogging or freezing in high humidity or cold temperature conditions.

For wiring, the housing contains a conduit hole sized for 3/4-inch conduit. A pressurizable version is also available that includes a 12 pin stainless steel connector along with fill and release valves.

ORDERING GUIDE

MODEL NO.	PREINSTALLED HEATER REQUIRES 10 WATTS	RATED INPUT	PRESSURIZATION OPTION	VOLTAGE RANGE	CABLE ENTRY	POWER TRANSFORMER*
HS9383S	---	---	---	---	3/4" NPT Conduit Hole	No
HS9383S-2H	Heater	24VAC, 60Hz	No	21.6 to 26.4		No
HS9383S-5H	Heater	230VAC, 50Hz	No	207 - 253		Yes*
HS9383S-6H	Heater	120VAC, 50/60Hz	No	108 - 132		Yes*
HS9383S-P	---	---	Yes	---	One Bayonet - Locking 12-Pin Stainless Steel connector (Shell size =14) with sealed stainless steel mating connector supplied**	No
HS9383S-2HP	Heater	24VAC, 60Hz	Yes	21.6 to 26.4		No
HS9383S-5HP	Heater	230VAC, 50Hz	Yes	207 - 253		Yes*
HS9383S-6HP	Heater	120VAC, 50/60Hz	Yes	108 - 132		Yes*

* Includes Transformer that steps voltage down to 24V to power heater. These models can be used with 115V or 24V cameras.
 ** Pressurization Model can be shipped filled with Dry Nitrogen pressure upon request. Contact Aegis Sales for price and lead time.

SPECIFICATIONS

Window: 0.118 in (3 mm) thick glass. Thermostatically-controlled window on heater/defogger models.
 (Polycarbonate window available - call factory)

Housing Mounting: Two (2) 1/4-20 tapped holes.

Camera Mounting: Removable cradle assembly with hole pattern for mounting camera/lens assembly.
 Cradle may be rotated through 360°.

Construction: 300 Grade Stainless Steel enclosure. Camera cradle is made from aluminum.

Finish: Stainless Steel (silver).

Dimensions: See drawings.

Weights

Housings:

Standard Conduit Housings: 6.6 lb (2.99 kg)

Pressurizable Housings: 7.3 lb (3.3 kg)

Mounts:

MT9208SS: 8" Mount 1.2lb (0.54 kg)

MT9212SS: 12" Mount 1.6 lb (0.73 kg)

MT9215SS: 15" L Shaped Mount 2.4 lb (1.09 kg)

Maximum Camera/Lens Size	
HS9383S	Camera up to 2.5W x 2.3H in (64W x 58H mm) Lenses up to 2.6W x 2.9H in (67 W x 75H mm) Camera & Lens up to 7 inches in length.
HS9383S-P	
HS9383S-2H	
HS9383S-2HP	
HS9383S-5H	Camera up to 2.5W x 2.3H in (64W x 58H mm) Lenses up to 2.6W x 2.9H in (67 W x 75H mm) Camera & Lens up to 9 inches in length.
HS9383S-6H	
HS9383S-5HP	
HS9383S-6HP	

ENVIRONMENTAL

Temperature: (heater versions)

At external ambient temperatures of -40°F to 122°F (-40°C to 50°C), maintains internal temperatures between -4°F to 131°F (-20°C to 55°C).

Salt Atmosphere: Designed to meet or exceed, MIL-STD-810E, Method 509, Procedure I.

Enclosure Protection: Designed to meet IP68 & NEMA-6P.

Safety: Designed to meet UL2044

CUSTOM OPTIONS

Call Aegis for details on Custom Options

AVAILABLE IN ALL MODELS:

TS: Tamper Switch sends an alarm when enclosure is opened.

PRESSURIZATION MODELS ONLY:

PS: Pressure Sensor to alert user to a predetermined change in pressure level.

OSD: On Screen Display with pressure sensor that can display temperature and/or pressure level on video signal.

IP: Network Wiring Configuration that includes a 12-pin connector pre-wired to accommodate Cat5e and Cat6

ACCESSORIES

HS9383TK Tamper Resistant Kit: Includes screws and insertion tool to permit tamper-resistance for one housing.

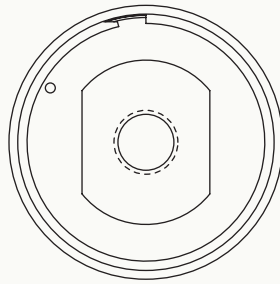
MT9208SS: Stainless Steel Wall/Column mount, 8-inch length.

MT9212SS: Stainless Steel Wall/Column mount, 12-inch length.

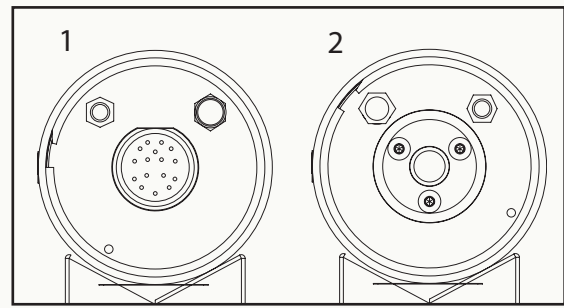
MT9215SS: Stainless Steel Wall/Column mount, 15-inch length.

HS9383SS: Sunshield provides protection from the direct rays of the sun and promotes cooling to reduce internal housing temperatures.

HS9383S REAR CAP OPTIONS - CABLE ENTRY

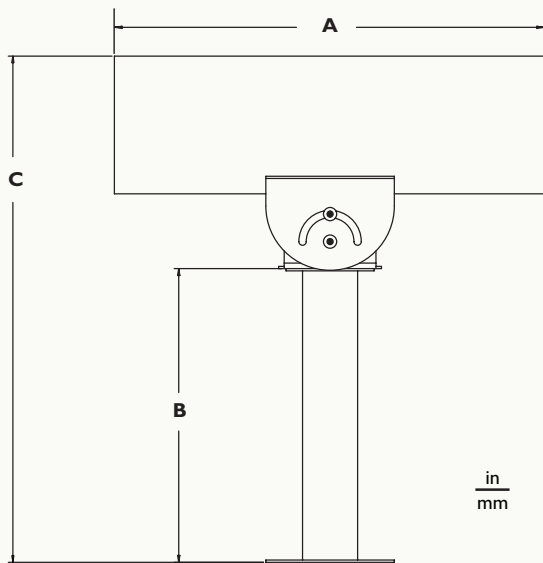


Standard Rear Cap
3/4-inch Conduit Hole

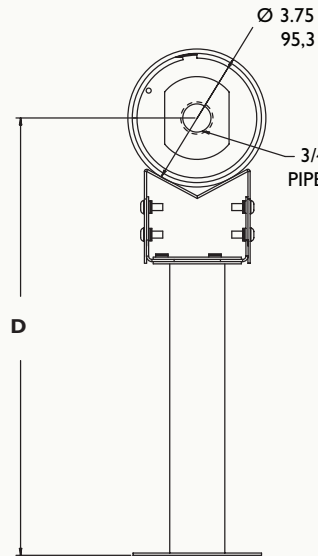
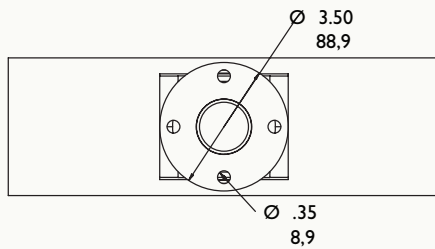


Pressurization Rear Cap
1-12 Pin Stainless Steel Connector
2- Rear cap with Connector cover installed.

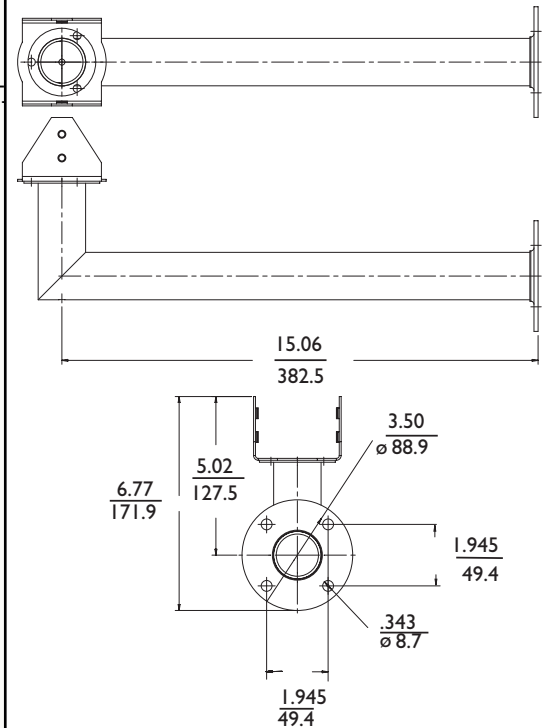
DIMENSIONAL OUTLINE CONDUIT CABLE ENTRY OPTION: HS9383S, HS9383S-2H, HS9383S-5H HS9383S-6H



in
mm

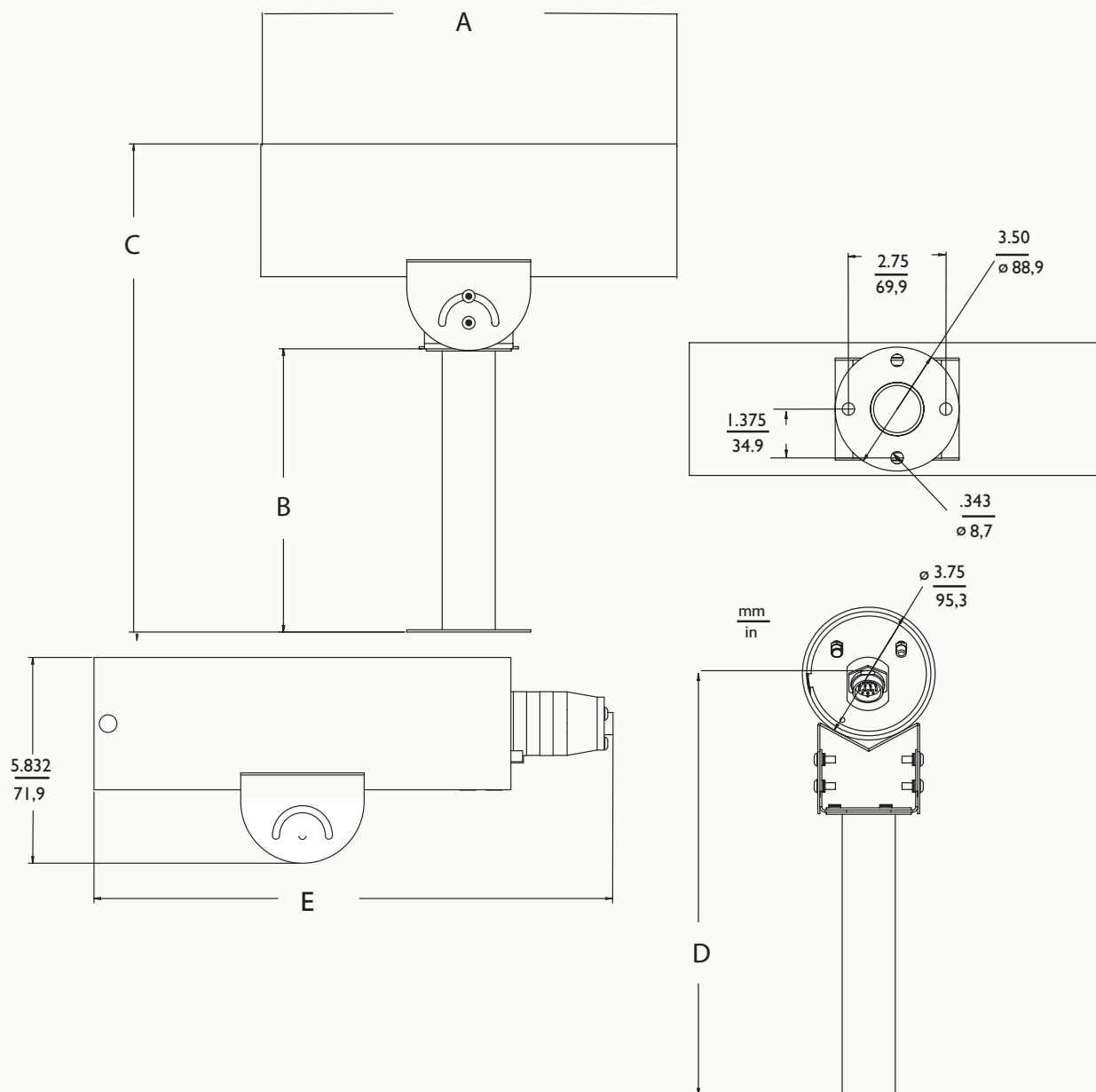


MT9215SS L-MOUNT OPTION



ENCLOSURE DIMENSIONS		HS9383S HS9383S-2H	HS9383S-5H HS9383S-6H
A	Length	11.82 in / 300.22 mm	14.82 in / 376.4 mm
MOUNT DIMENSIONS		MT9208SS	MT9212SS
B	Mount Height	8.06 in / 204.7 mm	12.06 in / 306.3 mm
C	Overall Mounted Height	13.85 in / 351.8 mm	17.85 in / 453.3 mm
D	Overall Height to center of conduit entry	11.97 in / 304.0 mm	15.97 in / 405.6 mm

DIMENSIONAL OUTLINE PRESSURIZATION OPTION - HS9383S-P, HS9383S-2HP, HS9383S-5HP, HS9383S-6HP



ENCLOSURE DIMENSIONS		HS9383S-P HS9383S-2HP	HS9383S-5HP HS9383S-6HP
A	Length	11.82 in / 300.2 mm	14.82 in / 376.4 mm
E	Length With Connector	14.72 in / 373.9 mm	17.72 in / 450.1 mm
MOUNT DIMENSIONS		MT9208SS	MT9212SS
B	Mount Height	8.06 in / 204.7 mm	12.06 in / 306.3 mm
C	Overall Mounted Height	13.85 in / 351.8 mm	17.85 in / 453.3 mm
D	Overall Height to center of entry	11.97 in / 304 mm	15.97 in / 405.6 mm

aigis
mechtronics
Now Part of **Linear**[®]
Building On Innovation.

1950 Camino Vida Roble, Suite 150
Carlsbad, CA 92008
Tel: 760.438.7000 800.421.1587
www.aigismech.com • www.linearcorp.com