

# Mini-Com® Flush Mount Modular Patch Panels

# PANDUIT®

SPECIFICATION SHEET

## specifications

Flush mount modular patch panels shall consist of a metal panel with molded rear snap-in faceplates. Patch panels shall accept all Mini-Com® Modules for UTP, STP, fiber, or A/V applications and shall mount to standard 19" racks. Patch panels shall be available in 24-port and 48-port standard density and 48-port and 72-port high density. Flush mount patch panels shall be easy to identify with pre-numbered ports. Angled patch panels shall be designed at an optimum angle to help route the cable.



## technical information

<b>Mounting options:</b>	Mounts to standard 19" rack
<b>Material:</b>	Stamping is CRS and faceplate is ABS
<b>Packaging:</b>	Packaged with appropriate pre-installed snap in faceplates and a set of mounting screws (#12-24 and M6)

## key features and benefits

<b>Modular</b>	Accepts all Panduit Mini-Com® Modules to mix and match media types in the same panel
<b>Angled design</b>	Allows cable to flow to each side of the rack and minimize the need for horizontal cable managers by enabling patch cords to be routed directly into vertical cable managers which leads to increased closet density
<b>Port and panel identification</b>	Pre-numbered ports with write on areas (except 48-port high density)
<b>Optional strain relief bars</b>	To help support and manage cables
<b>Optional filler panels</b>	Flat and angled design fill unused rack openings to provide a clean and consistent look when used with any version of Panduit patch panels
<b>Optional extender bracket</b>	Allows 19" patch panels to be mounted on a 23" rack
<b>High density</b>	More modules per rack space

## applications

Mini-Com® Flush Mount Modular Patch Panels are ideal for multi-media applications; they accept all Mini-Com® Modules. Flat and angled designs in various port densities available to fit most needs, include pre-numbered port identification. Angled patch panels are available for applications in which rack space is limited. The design allows cable to flow to each side of the rack, minimizing the need for horizontal cable managers and increasing the density of the rack space. Flush mount patch panels can mount on a standard 19" rack or a 23" rack when using the extender brackets PEB1 or PEB2.

### Mini-Com® Flat Flush Mount Patch Panels

24-port, 1 RU: CPP24FMWBLY  
48-port, 2 RU: CPP48FMWBLY

### Mini-Com® Flat Flush Mount High Density Patch Panels

48-port, 1 RU: CPP48HDWBLY\*  
48-port, 1 RU: CPP48HDEWBL  
48-port, 1 RU: CPP48HDVNSWBL  
72-port, 2 RU: CPP72FMWBLY

### Mini-Com® Angled Flush Mount Patch Panels

24-port, 1 RU: CPPA24FMWBLY  
48-port, 2 RU: CPPA48FMWBLY

### Mini-Com® Angled Flush Mount High Density Patch Panels:

48-port, 1 RU: CPPA48HDWBLY\*  
48-port, 1 RU: CPPA48HDEWBL  
48-port, 1 RU: CPPA48HDVNSWBL  
72-port, 2 RU: CPPA72FMWBLY

### Label Options for Standard Density Patch Panels

Laser/ink jet: C252X030FJJ  
TDP43ME: C252X030YPT  
PanTher™  
LS8E: C252X030FJC  
Cougar LS9: T031X000FJC-BK

### Label Options for 72-Port High Density Patch Panels

Laser/ink jet: C261X030FJJ  
TDP43ME: C261X030YPT  
PanTher™  
LS8E: C261X030FJC  
Cougar LS9: T031X000FJC-BK

### Strain Relief Bars

Straight: SRBS19BL-XY  
Extended, 2": SRB19BLY  
With hook and loop ties: SRBM19BLY  
With adjustable clips:  
Deep, 5": SRBWCY  
Deep, 5": SRB19D5BLY  
Deep, 7": SRB19D7BLY  
Multi-depth: SRB19MDBL

### Rack Filler Panels

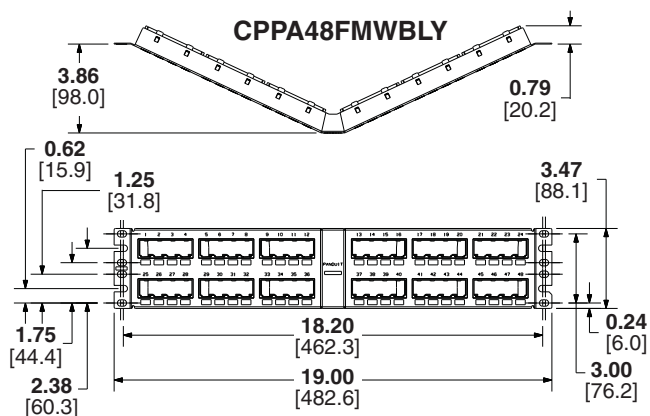
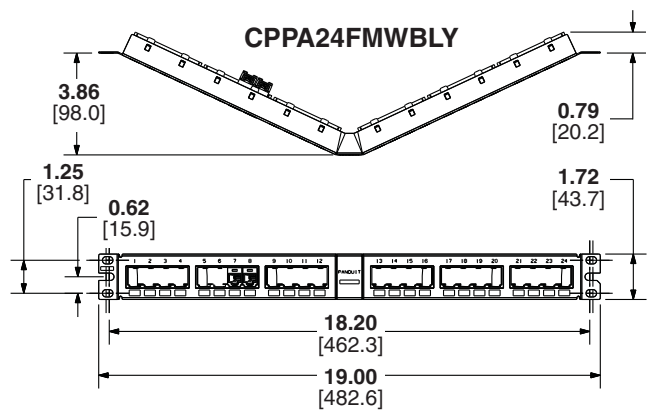
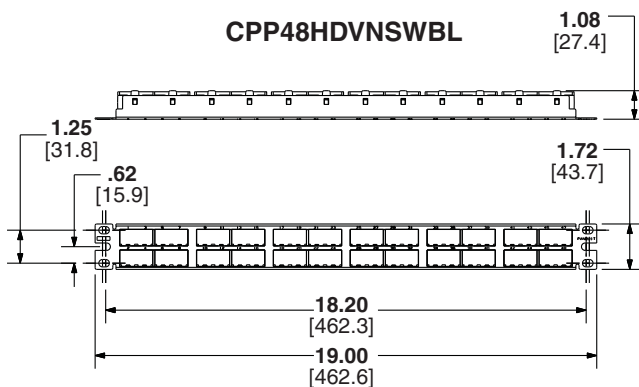
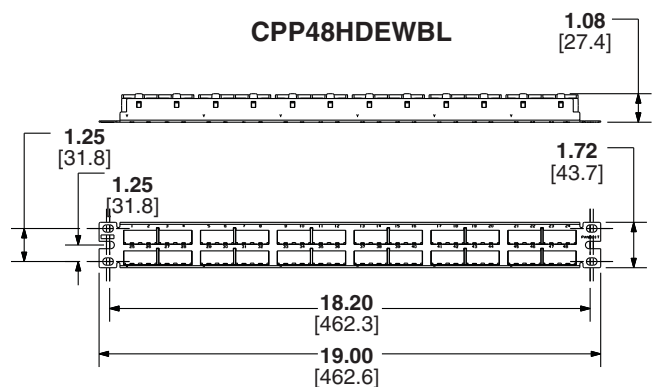
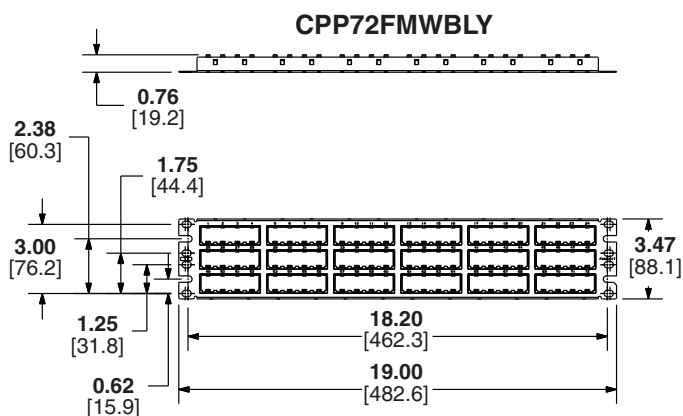
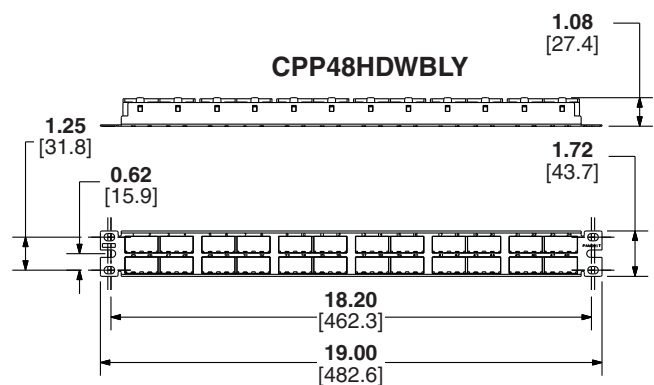
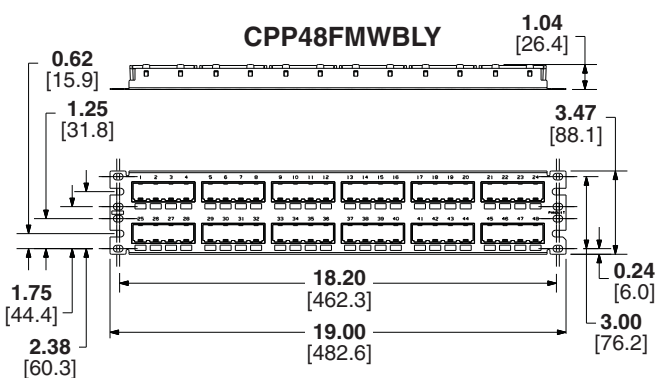
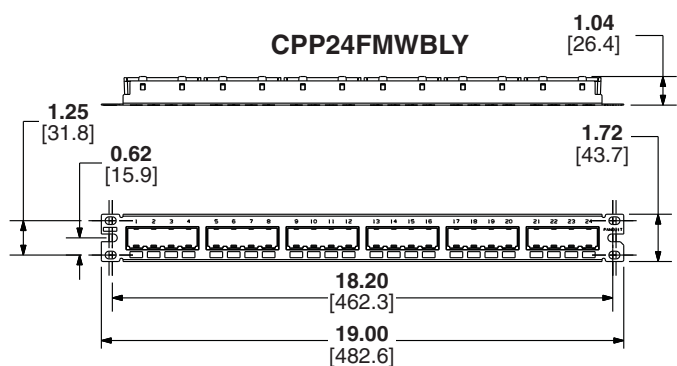
See [www.Panduit.com](http://www.Panduit.com) or catalog for rack filler panel options.

### Extender Brackets

1 RU: PEB1  
2 RU: PEB2

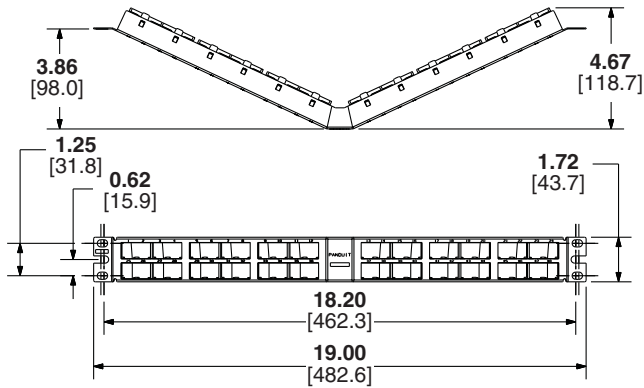
\*Space not available for port labels.

# Mini-Com® Flush Mount Modular Patch Panels

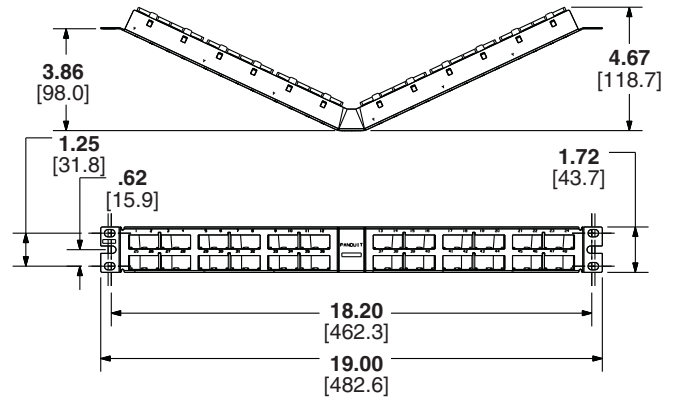


# Mini-Com® Flush Mount Modular Patch Panels

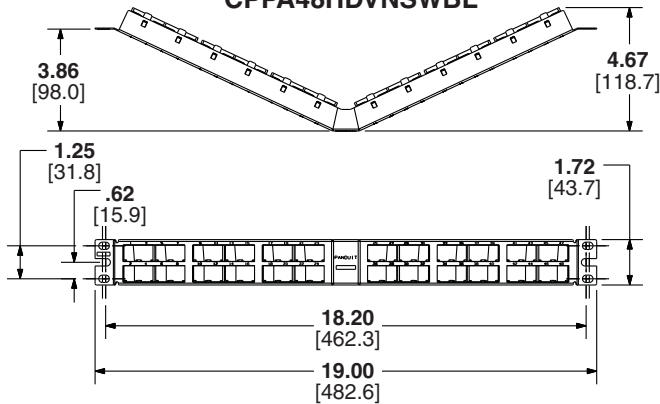
**CPPA48HDWBL**



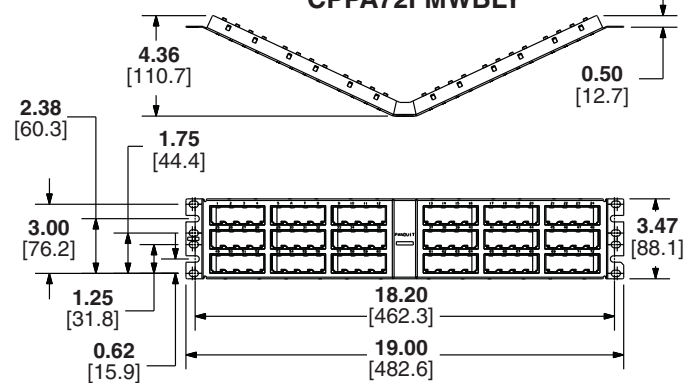
**CPPA48HDEWBL**



**CPPA48HDVNSWBL**



**CPPA72FMWBL**



Dimensions are in inches. [Dimensions in brackets are metric].

## WORLDWIDE SUBSIDIARIES AND SALES OFFICES

PANDUIT CANADA  
Markham, Ontario  
cs-cdn@panduit.com  
Phone: 800.777.3300

PANDUIT EUROPE LTD.  
London, UK  
cs-emea@panduit.com  
Phone: 44.20.8601.7200

PANDUIT SINGAPORE PTE. LTD.  
Republic of Singapore  
cs-ap@panduit.com  
Phone: 65.6305.7575

PANDUIT JAPAN  
Tokyo, Japan  
cs-japan@panduit.com  
Phone: 81.3.6863.6000

PANDUIT LATIN AMERICA  
Guadalajara, Mexico  
cs-la@panduit.com  
Phone: 52.33.3777.6000

PANDUIT AUSTRALIA PTY. LTD.  
Victoria, Australia  
cs-aus@panduit.com  
Phone: 61.3.9794.9020

For a copy of Panduit product warranties, log on to [www.panduit.com/warranty](http://www.panduit.com/warranty)

For more information

Visit us at [www.panduit.com](http://www.panduit.com)

Contact Customer Service by email: [cs@panduit.com](mailto:cs@panduit.com)  
or by phone: 800.777.3300 and reference OTSP25

**PANDUIT®**

©2011 Panduit Corp.  
ALL RIGHTS RESERVED.  
**WW-OTSP25**  
9/2011