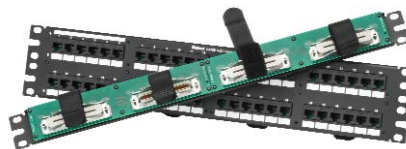


## specifications

Category 5e RJ21 to RJ45 patch panels shall feature 24 or 48 RJ45 ports on the front of the panel with four or eight RJ21 connectors on the back of the panel. Each RJ45 connector shall be fully wired to all 8 pins and support 10/100/1000 Gigabit Ethernet performance. RJ21 connectors shall be wired per industry standards for backwards compatibility. Patch panels shall mount to standard EIA 19" or 23" racks and be available in flat or angled versions. Patch panels shall not require the use of a punchdown tool.



## technical information

**Category 5e/  
Class D channel  
performance:** Exceeds all TIA/EIA-568-B.2 Category 5e and ISO 11801 Class D channel standard requirements

**Mounting option:** Mounts to standard 19" or 23" racks  
(23" rack requires use of extender bracket)

**Packaging:** Packaged with M6 and #12 – 24 mounting screws

## key features and benefits

<b>RJ45 connector</b>	All 8 pins are utilized to support up to and including Gigabit Ethernet
<b>RJ21 connector</b>	Bridges RJ21 connectivity to RJ45 connectivity providing increased design flexibility and reduced installation costs
<b>Secure connector</b>	Accommodates 110° male cable assemblies on back of patch panel for greater system flexibility; screw connectors and <i>TakTy</i> ® Hook and Loop Cable Ties provide additional security
<b>Optional angled patch panel design</b>	Facilitates proper bend radius of each cable as it is routed directly into a vertical cable manager; minimizes need for horizontal cable managers for improved rack density
<b>Port and panel identification</b>	Write-on areas follow TIA/EIA-606-A labeling standards; optional label kits available

## applications

*DATA-PATCH*™ RJ21 to RJ45 Patch Panels utilize all 8 pins of each RJ45 connector, providing support up to and including Gigabit Ethernet performance. The *DATA-PATCH*™ RJ21 to RJ45 Patch Panels are suitable for deployment to the zone or high performance workstations. The angled

patch panels manage high density network applications in half the vertical space of conventional cable management systems. *DATA-PATCH*™ RJ21 to RJ45 Patch Panels complement the *PANDUIT* cable management system for overall organized and efficient cabling and greater network reliability.

### *DATA-PATCH*™ RJ21 to RJ45 Angled Patch Panels

**24-port, 1 RU:** DPA245E88TV25  
**48-port, 2 RU:** DPA485E88TV25

### *DATA-PATCH*™ RJ21 to RJ45 Flat Patch Panels

**24-port, 1 RU:** DP245E88TV25  
**48-port, 2 RU:** DP485E88TV25

### 10/100/1000BASE-T Cable Assemblies – RJ21 Plug to RJ21 Plug

**Straight, 110° right orientation:** UTPCH\*SR25Y

**Straight, 110° left orientation:** UTPCH\*SL25Y

**Both, 110° left orientation:** UTPCH\*L25Y

**Both, 110° right orientation:** UTPCH\*R25Y

**110° left, 110° right orientation:** UTPCH\*LR25Y

### 10/100/1000BASE-T Cable Assemblies – MRJ21 Plug to RJ21 Plug

**MRJ21 plug to RJ21 plug:** UTPCH\*SMRJ25

### Accessories

**One rack space extender bracket:** PEB1

**Two rack space extender bracket:** PEB2

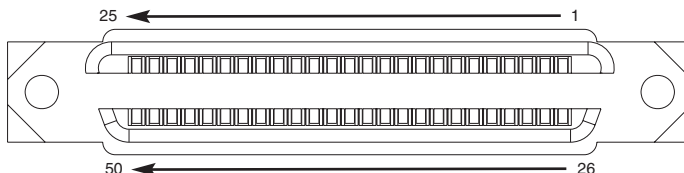
**24-port label kit:** DPLK24

**48-port label kit:** DPLK48

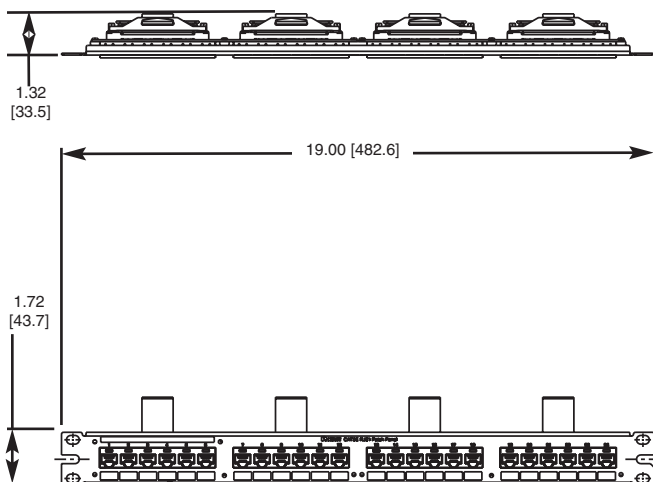
\*Substitute 6, 8, 10, 15 or 20 for length of cable assembly in feet.

# DATA-PATCH™ Category 5e RJ21 to RJ45 Patch Panels

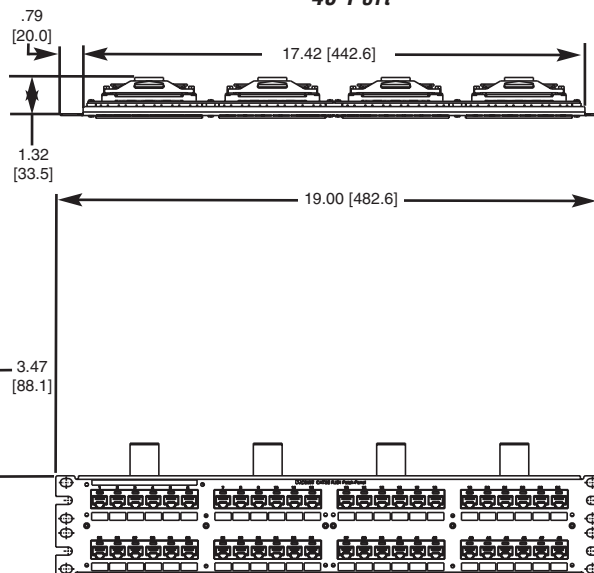
## 50-Pin Female Connector



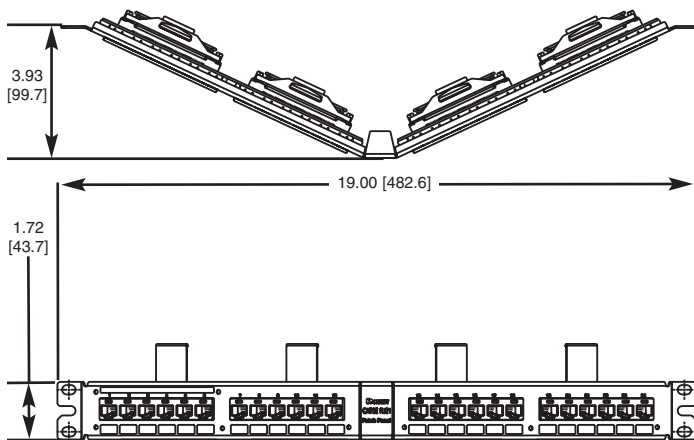
## 24-Port



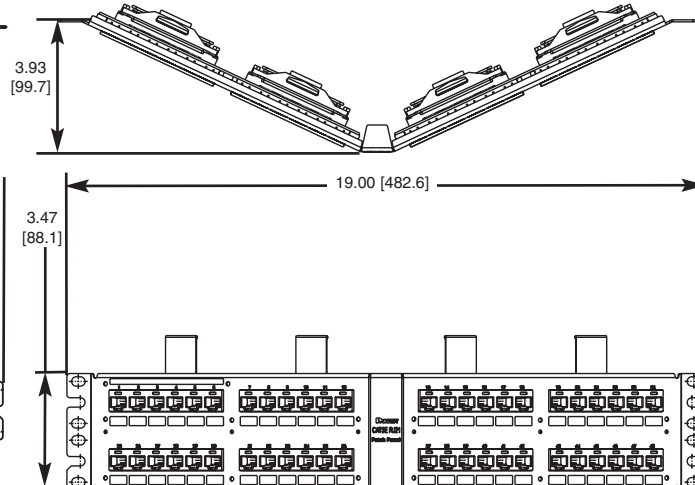
## 48-Port



## 24-Port Angled



## 48-Port Angled



Dimensions are in inches [Dimensions in brackets are metric]

## WORLDWIDE SUBSIDIARIES AND SALES OFFICES

**PANDUIT CANADA**  
Markham, Ontario  
cs-cdn@panduit.com  
Phone: 800.777.3300

**PANDUIT EUROPE LTD.**  
London, UK  
cs-emea@panduit.com  
Phone: 44.20.8601.7200

**PANDUIT SINGAPORE PTE. LTD.**  
Republic of Singapore  
cs-ap@panduit.com  
Phone: 65.6305.7575

**PANDUIT JAPAN**  
Tokyo, Japan  
cs-japan@panduit.com  
Phone: 81.3.6863.6000

**PANDUIT LATIN AMERICA**  
Jalisco, Mexico  
cs-la@panduit.com  
Phone: 52.333.777.6000

**PANDUIT AUSTRALIA PTY. LTD.**  
Victoria, Australia  
cs-aus@panduit.com  
Phone: 61.3.9794.9020

For a copy of *PANDUIT* product warranties, log on to [www.panduit.com/warranty](http://www.panduit.com/warranty)



For more information  
**Visit us at [www.panduit.com](http://www.panduit.com)**  
Contact Customer Service by email: [cs@panduit.com](mailto:cs@panduit.com)  
or by phone: 800-777-3300 and reference COSP129

©2009 *PANDUIT* Corp.  
ALL RIGHTS RESERVED.  
**WW-COSP129**  
5/2009