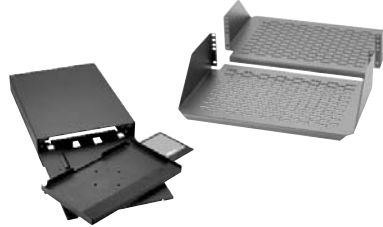


specifications

Rack mounted shelves shall be one, two and three rack spaces and 19 inches wide. The shelves shall be front mounted, slide out or cantilevered versions. Keyboard shelves shall accommodate either 16.5 inch or 20 inch wide keyboards and a mouse. The keyboard shelves shall fit in a 2 RU rack space.



technical information

Rack mount shelves:	SRM19FM1:	1.7"H x 19.0"W x 15.2"D (44mm x 483mm x 385mm), 1 RU
	SRM19FM2:	3.5"H x 19.0"W x 15.2"D (88mm x 483mm x 385mm), 2 RU
	SRM19CM3:	5.2"H x 19.2"W x 12.5"D (133mm x 489mm x 316mm), 3 RU
	SRM19CMV3:	5.2"H x 19.2"W x 25.0"D (133mm x 489mm x 635mm), 3 RU
	SRM19X18A1:	1.8"H x 19.0"W x 18.0"D (44mm x 483mm x 457mm), 1 RU
	SRM19X25A1:	1.8"H x 19.0"W x 25.0"D (44mm x 483mm x 635mm), 1 RU
Shelf load rating:	SRM19FM1:	30 lbs.
	SRM19FM2:	50 lbs.
	SRM19CM3:	200 lbs.
	SRM19CMV3:	200 lbs.
	SRM19X18A1:	250 lbs.
	SRM19X25A1:	250 lbs.
	SRM19MK2:	200 lbs.; keyboards up to 16.5" wide
SRM19MPK2:	200 lbs.; keyboards up to 20.0" wide	
Keyboard shelves:	SRM19MK2:	200 lbs.; keyboards up to 16.5" wide
	SRM19MPK2:	200 lbs.; keyboards up to 20.0" wide
Keyboard shelves packaging:	Keyboard shelves come with a mouse pad, wrist pad, four standard brackets for mounting to standard channel racks, two rear support brackets for mounting to <i>NETFRAME</i> ® Racks and #12-24 mounting screws	

key features and benefits

Center mount cantilevered shelf	Includes front and rear shelf to mount on standard 3" channel racks
Heavy load rating	Support non-rack mountable equipment up to 250 lbs.
Shelves:	
Keyboard versions include pull-out drawer with slide out mouse tray	Storing keyboards inside of shelf when not in use make an aesthetically pleasing rack

applications

The *PANDUIT* line of shelves provide an aesthetically pleasing solution that allow you to mount test gear, computer equipment, and small networking devices on any EIA 19 inch rack or 23 inch rack with PEB1 or PEB2 extender brackets. This enables you to design a network layout to your own specifications.

When used with *PANDUIT* racks, enclosures, cable managers and connectivity, the user receives a complete networking solution that will satisfy telecommunications room requirements today and into the future.

Front Mount Shelves 19"

1 RU:	SRM19FM1
2 RU:	SRM19FM2

Center Mount Cantilevered Shelves, 19" 3 RU

Non-vented:	SRM19CM3
Vented:	SRM19CMV3

Adjustable Shelf 19" 1 RU

19":	SRM19X18A1
25":	SRM19X25A1

Slide Out Keyboard/Mouse and Monitor Shelf

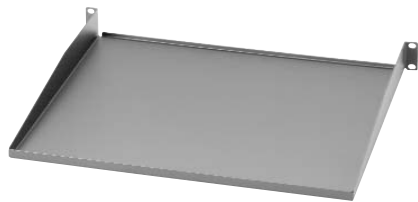
19":	SRM19MK2
19" pivoting:	SRM19MPK2

Racks

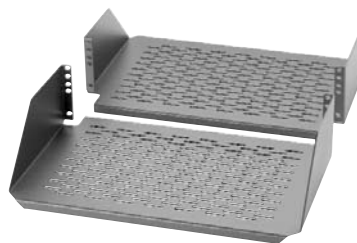
8 foot 52 RU:	CMR19x96
7 foot 45 RU:	CMR19x84
7 foot 45 RU numbers up:	CMR19x84NU
4 foot 24 RU:	CMR18x47
7 foot 45 RU:	
23 inch wide:	CMR23x84

All have #12-24 threaded rails.

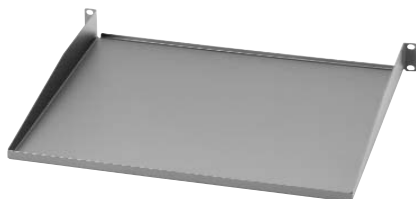
Shelves



SRM19FM1



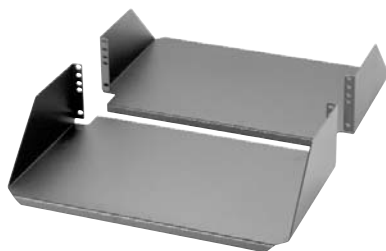
SRM19CMV3



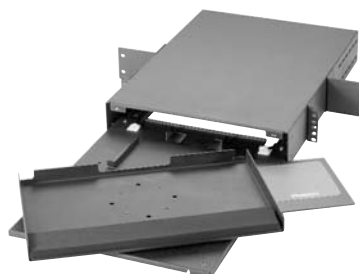
SRM19FM2



SRM19X18A1



SRM19CM3



SRM19MPK2

WORLDWIDE SUBSIDIARIES AND SALES OFFICES

PANDUIT CANADA
Markham, Ontario
cs-cdn@panduit.com
Phone: 800.777.3300

PANDUIT EUROPE LTD.
London, UK
cs-emea@panduit.com
Phone: 44.20.8601.7200

PANDUIT SINGAPORE PTE. LTD.
Republic of Singapore
cs-ap@panduit.com
Phone: 65.6305.7575

PANDUIT JAPAN
Tokyo, Japan
cs-japan@panduit.com
Phone: 81.3.3767.7011

PANDUIT LATIN AMERICA
Jalisco, Mexico
cs-la@panduit.com
Phone: 52.333.777.6000

PANDUIT AUSTRALIA PTY. LTD.
Victoria, Australia
cs-aus@panduit.com
Phone: 61.3.9794.9020

For a copy of *PANDUIT* product warranties, log on to www.panduit.com/warranty



For more information

Visit us at www.panduit.com

Contact Customer Service by email: cs@panduit.com
or by phone: 800-777-3300 and reference RKSP20

©2008 *PANDUIT* Corp.
ALL RIGHTS RESERVED.
WW-RKSP20
9/2008