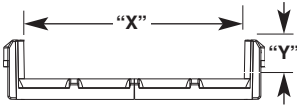


specifications

The overhead cable routing system shall provide a high capacity data cable pathway directly over Panduit® Net-Access™ Switch and Server Cabinets with or without vertical exhaust duct. Modular base components shall be molded from a rigid, non-metallic material and provide a smooth pathway for cables. The base units shall have 6" (150mm) high sidewalls to contain cables and shall have integral spill-outs that align with the cable inlets on the cabinet to provide 3" (75mm) bend radius control. Bases shall attach directly to the top of Net-Access™ Cabinets with minimum fasteners. An optional molded, snap-in bridge insert shall provide support for cables passing over unused spill-outs, while also allowing for the 3" (75mm) bend radius to be maintained when cables are routed into an adjacent cabinet. An optional trapeze bracket shall enable the integration of a secondary overhead cable pathway for fiber optic cables. The system shall complement the aesthetics of Net-Access™ Cabinets once installed.



technical information



Fill	"X"	"Y"	Internal Area in ²	Cat. 6A	Cat. 6
				7.62mm Dia. 0.3" Dia.	6.35mm Dia. 0.25" Dia.
CRB6BL – CabRunner® Net Access™ Base					
40%	35"	6"	208.94	1182	1703
50%	35"	6"	208.94	1478	2128
60%	35"	6"	208.94	1774	2554
CRB6VEDBL – CabRunner® Net Access™ Vertical Exhaust Duct Base					
40%	25.2"	6"	151.2	854	1230
50%	25.2"	6"	151.2	1068	1538
60%	25.2"	6"	151.2	1282	1846

Material: ABS, Steel
Flammability: UL94-HB

key features and benefits

2 piece molded design	Provides self-supporting base eliminating need of secondary infrastructure; requires minimal components for quick installation
Integral 6" (150mm) high sidewalls	Contains high capacity cables and eliminates the need to lash bundles for faster installation
Decorative shroud	Complements the look of the Net-Access™ Cabinet to enhance data center aesthetics
Integral 3" (75mm) bend radius control	Protects cables from physical damage improving network reliability
Large cable routing area	Maximizes space utilization above the cabinets reducing cost of ownership
Multiple cable spill-outs	Allows cables to be routed into the front, middle, or rear of the Net-Access™ Cabinet for increased versatility
Bridge insert (optional)	Supports cables passing over unused cable inlets minimizing damage to cables and improving network reliability
Integral screw mounting bosses	Provides a secure mounting method with minimum use of tools and loose fasteners for faster implementation
Trapeze brackets (optional)	Enables simple integration of FiberRunner® Cable Routing System for fiber optic cables to speed implementation and provide greater system flexibility

applications

The CabRunner® Overhead Cable Routing System is a data center infrastructure pathway designed to route and manage high capacities of data cables directly over the Panduit® Net-Access™ Switch and Server Cabinets with or without vertical exhaust duct. Rugged construction ensures a solid pathway that supports and physically protects cables improving

network reliability. The clean, simple design complements Net-Access™ Cabinets providing greater data center aesthetics. It is optimized to support high performance copper data cables routed between the main distribution area (MDA), horizontal distribution area (HDA), and the equipment distribution area (EDA).

CabRunner® Overhead Cable Routing System

Base unit:	CRB6BL
VED base unit:	CRB6VEDBL
Bridge insert:	CRBRDGBL
Trapeze bracket:	CRTB
VED trapeze bracket:	CRVEDTB

Net-Access™ Switch Cabinets

Includes cable management, threaded rails, doors, and side panels:	CN1
Includes cable management, threaded rails, and doors:	CN2
Includes cable management and threaded rails:	CN3

Net-Access™ Server Cabinets

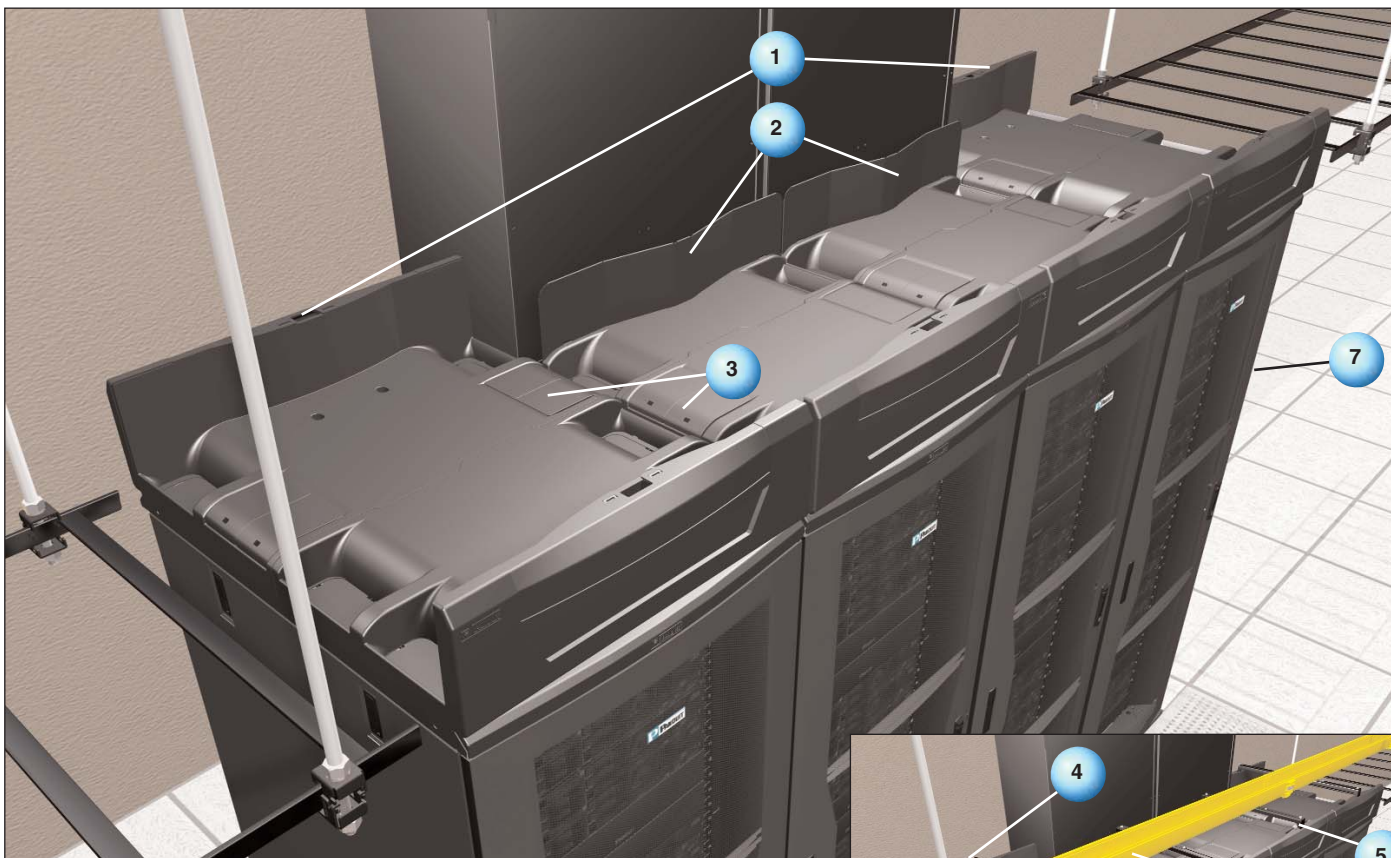
Includes cable management, POU brackets, cage nut rails, doors, and side panels:	CS1
Includes cable management, POU brackets, cage nut rails, and doors:	CS2
Includes cable management, POU brackets, and cage nut rails:	CS3

Net-Access™ Vertical Exhaust System Kits

Vertical extender:	CVED32
Variable duct 42-70" (1068-1778mm):	CVED32VE
Variable short duct 20-36" (508-914mm):	CVED32VES

*For additional information on Net-Access™ Cabinets, refer to brochure SA-RKCB14.

CabRunner® Overhead Cable Routing System



1 Base Unit – CRB6BL



2 Base for Net-Access™ Vertical Exhaust Duct – CRB6VEDBL



3 Bridge Insert – CRBRDGBL



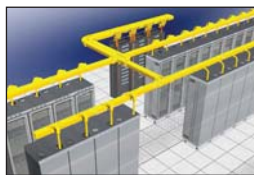
4 Trapeze Bracket – CRTB



5 Trapeze Bracket for Net-Access™ Vertical Exhaust Duct – CRVEDTB



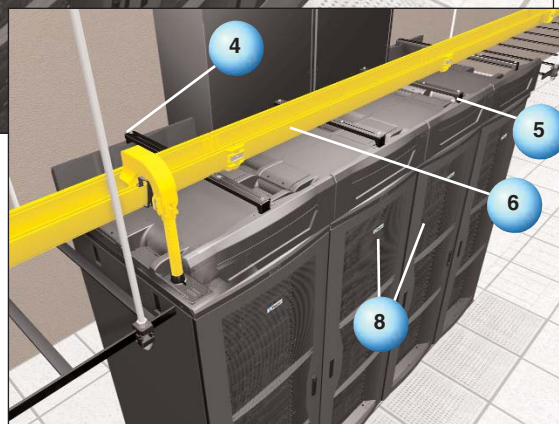
6 FiberRunner® System* – FR6X4YL6



7 Net-Access™ Switch Cabinet* – CN1



8 Net-Access™ Server Cabinet* – CS1



FiberRunner® Cable Routing System mounted to CabRunner® Overhead Cable Routing System with optional trapeze brackets.

*For the FiberRunner® Routing System and Net-Access™ Cabinets, refer to Physical Infrastructure Solutions Catalog, SA-NCCB51 or www.panduit.com for more information.

WORLDWIDE SUBSIDIARIES AND SALES OFFICES

PANDUIT CANADA
Markham, Ontario
cs-cdn@panduit.com
Phone: 800.777.3300

PANDUIT EUROPE LTD.
London, UK
cs-emea@panduit.com
Phone: 44.20.8601.7200

PANDUIT SINGAPORE PTE. LTD.
Republic of Singapore
cs-ap@panduit.com
Phone: 65.6305.7575

PANDUIT JAPAN
Tokyo, Japan
cs-japan@panduit.com
Phone: 81.3.6863.6000

PANDUIT LATIN AMERICA
Jalisco, Mexico
cs-la@panduit.com
Phone: 52.33.3777.6000

PANDUIT AUSTRALIA PTY. LTD.
Victoria, Australia
cs-aus@panduit.com
Phone: 61.3.9794.9020

For a copy of Panduit product warranties, log on to www.panduit.com/warranty

For more information

Visit us at www.panduit.com

Contact Customer Service by email: cs@panduit.com
or by phone: 800-777-3300 and reference FRSP09

PANDUIT®

©2010 Panduit Corp.
ALL RIGHTS RESERVED.

WW-FRSP09

5/2010