

specifications

The enclosure shall require the removal of only one floor tile and drop through a single tile opening without disassembly to install. The mounting brackets shall be of a one-piece design without any loose hardware for easy attachment to raised floor pedestals. The enclosure shall be properly grounded and bonded to the raised floor system when installed without the need of additional jumpers or other components. The enclosure shall meet UL2043 requirements for use in a plenum space, be available in multiple sizes, and be configurable for both field-terminated and pre-terminated connectivity. The enclosure and cable openings shall have the capacity to support 48 Category 6A/6/5e cables per rack space. Enclosure shall have flexible cable ingress/egress grommets that allow for quick and easy moves, adds, and changes, while still maintaining a plenum rating. The enclosure shall be capable of being secured and protected from unauthorized access with an optional lockable cover.



technical information

Standards:	UL 2043 for use in plenum spaces
Dimensions:	PZRFE4U: 22.62"H x 22.62"W x 5.00"D (574.7mm x 574.7mm x 127.0mm) PZRFE8U: 22.62"H x 22.62"W x 8.50"D (574.7mm x 574.7mm x 215.9mm) PZRFE12U: 22.62"H x 22.62"W x 12.00"D (574.7mm x 574.7mm x 304.8mm) PZRFC: 22.88"H x 22.88"W x 1.09"D (581.1mm x 581.1mm x 27.6mm)
Minimum depth of raised floor:	PZRFE4U: 6.0" (152.4mm); with cover: 8.0" (203.2mm) PZRFE8U: 9.5" (241.3mm); with cover: 11.5" (292.1mm) PZRFE12U: 13.0" (330.2mm); with cover: 15.0" (381.0mm)
Cable capacity:	PZRFE4U – Category 6A/6/5e: 192 PZRFE8U – Category 6A/6/5e: 384 PZRFE12U – Category 6A/6/5e: 576
Installation:	Single tile drop-in enclosure and one-piece mounting brackets with captured hardware; does not require removal of stringers
Packaging:	Raised floor enclosures include six Cool Boot™ Raised Floor Air Sealing Grommets, four pedestal one-piece mounting brackets, four bonding bolts and magnetic ruler
Materials:	Made with rugged aluminum and steel

key features and benefits

In-floor design	Saves valuable real estate in the data center by allowing cable terminations below raised floors, relieves congestion in racks and cabinets
Single tile drop-in design	Reduces installation time by as much as 50% compared to similar solutions on the market
One piece mounting with captured hardware	Reduces the number of components and time needed to install
Integrates Cool Boot™ Raised Floor Air Sealing Grommets	Allows for quicker and easier moves, adds, and changes while maintaining a plenum rating to help conserve energy
Integral grounding and bonding design	Enclosure installation creates a mechanical electrical bond to raised floor pedestals without the need for extra components; protects network equipment and personnel
Multiple sizes	Allows greater network design flexibility
High capacity cable ingress and egress	Manages and organizes up to 576 Category 6A/6/5e, or 1152 fiber optic cables, which is twice the capacity of similar products on the market
Configurable mounting brackets	Accommodates field-terminated or pre-terminated connectivity for greater network design flexibility
Adjustable TIA/EIA 19" mounting brackets	Allows mounting brackets to be rotated and/or adjusted for greater network design flexibility and improve access to patch panels
Optional lockable cover	Protects against unauthorized access for increased security protection and network reliability

applications

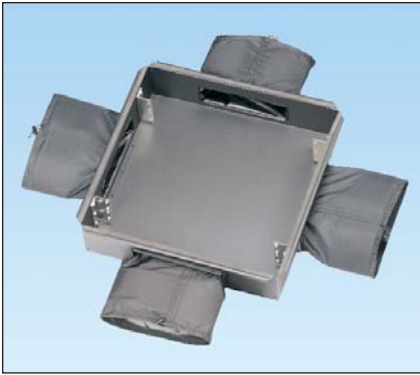
A Panduit® PanZone® Raised Floor Enclosure is an ideal data center solution as a consolidation point or Zone Distribution Area (ZDA). The raised floor enclosure saves valuable real estate by providing space below the raised floor to mount TIA 19" flat rack mountable patch panels, which relieves congestion in racks and cabinets for installing network equipment. For mainframes or storage area network applications, a ZDA can also save valuable

floor space by locating a termination point in a raised floor enclosure rather than in an adjacent cabinet. The raised floor enclosure is capable of accommodating field terminated or pre-terminated copper or fiber cassettes as a ZDA for rapid data center deployments and reconfigurations. The enclosure also provides an efficient and cost effective method to design and deploy structured cabling systems for open office architecture in any raised floor application.

Raised Floor Enclosures	
4 RU:	PZRFE4U
8 RU:	PZRFE8U
12 RU:	PZRFE12U
Raised Floor Enclosure Cover	
Lockable cover:	PZRFC
Mini-Com® Ultimate ID® Modular Patch Panels	
24-port:	UICMPP24BLY
48-port:	UICMPP48BLY
Mini-Com® Flush Mount Modular Patch Panels	
24-port:	CPP24FMWBLY
48-port:	CPP48FMWBLY
Mini-Com® High Density Modular Patch Panels	
48-port:	CPP48HDWBLY
72-port:	CPP72FMWBLY
Opticom® Fiber Adapter Patch (FAP) Panels Accepts QuickNet™ Pre-Terminated MTP* Cassettes	
Accepts four FAPs/cassettes:	CFAPPBL1
Accepts eight FAPs/cassettes:	CFAPPBL2

*MTP is a registered trademark of US Conec Ltd.

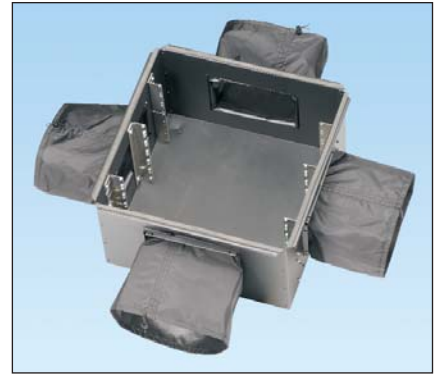
PanZone® Raised Floor Enclosures



PZRFE4U



PZRFE8U



PZRFE12U

PanZone® Raised Floor Cover



PZRFC

PanZone® Raised Floor Enclosure Application



PZRFE4U with Copper Connectivity



PZRFE8U with QuickNet™ Copper and Fiber Connectivity

WORLDWIDE SUBSIDIARIES AND SALES OFFICES

PANDUIT CANADA
Markham, Ontario
cs-cdn@panduit.com
Phone: 800.777.3300

PANDUIT EUROPE LTD.
London, UK
cs-emea@panduit.com
Phone: 44.20.8601.7200

PANDUIT SINGAPORE PTE. LTD.
Republic of Singapore
cs-ap@panduit.com
Phone: 65.6305.7575

PANDUIT JAPAN
Tokyo, Japan
cs-japan@panduit.com
Phone: 81.3.6863.6000

PANDUIT LATIN AMERICA
Guadalajara, Mexico
cs-la@panduit.com
Phone: 52.33.3777.6000

PANDUIT AUSTRALIA PTY. LTD.
Victoria, Australia
cs-aus@panduit.com
Phone: 61.3.9794.9020

For a copy of Panduit product warranties, log on to www.panduit.com/warranty

For more information

Visit us at www.panduit.com

Contact Customer Service by email: cs@panduit.com
or by phone: 800-777-3300 and reference ZCSP08

PANDUIT®

© 2011 Panduit Corp.
ALL RIGHTS RESERVED.

WW-ZCSP08

3/2011