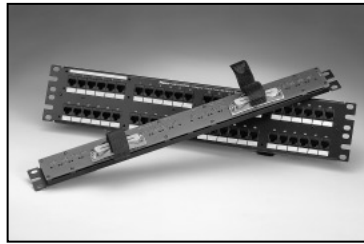


specifications

10/100BASE-T patch panels shall feature RJ45 ports on the front of the panel. Panel PC board is wired for 10BASE-T and 100BASE-T Ethernet utilizing pins 1,2 and 3,6. The back of the patch panel consists of female telco 50-pin/25-pair connectors wired per RJ21 industry standards for backward compatibility. Patch panels shall mount to standard EIA 19" or 23" racks. Patch panel does not require the use of a punchdown tool.



technical information

Performance:	Category 5e designed to maintain network cabling system reliability (UL 1863 Listed and CSA Certified)
Dimensions:	24-port = 1.72"H x 19.0"W x 1.39"D (43.7mm x 482.6mm x 35.3mm), 1 RU 48-port = 3.47"H x 19.0"W x 1.39"D (88.1mm x 482.6mm x 35.3mm), 2 RU
Mounting option:	Mounts to standard EIA 19" rack or 23" rack when used with optional panel extender brackets
Packaging:	Packaged with four #12 – 24 x .5" round head screws to allow fastening to racks

key features and benefits

Port and panel identification	Pre-numbered ports, write-on areas and optional label holders follow TIA-EIA-606-A labeling standards
RJ21 connector	Female Industry Standard Meets EIA standard environmental and electrical performance UL recognized CSA approved
Hook and loop/screw connector	Accommodates 180, 110 or 90 degree male patch cord connectors on back of patch panel

applications

10/100BASE-T patch panels provide a Category 5e channel when used with PANDUIT Category 5e 25-pair cable assemblies. Panels should be used with the PANDUIT cable management system to

achieve the most organized and efficient telecommunications room cabling. Patch panels provide maximum density to meet high density requirements by conserving space.

10/100BASE-T Patch Panel

24-port:	DP24584TV25Y
48-port:	DP48584TV25Y

Category 5e 25-Pair Cable Assemblies

Straight, 110° right orientation:	UTPCH*SR25Y
--	-------------

Straight, 110° left orientation:	UTPCH*SL25Y
---	-------------

Both, 110° left orientation:	UTPCH*L25Y
-------------------------------------	------------

Both, 110° right orientation:	UTPCH*R25Y
--------------------------------------	------------

110° left 110° right:	UTPCH*LR25Y
------------------------------	-------------

12 PAN-PLUG™ Modular Plugs straight:	UTPCH*12PP25Y
---	---------------

*Substitute: 6, 8, 10, 15 or 20 for length of cable assembly (in feet)

Accessories

One rack space extender bracket:	PEB1
---	------

Two rack space extender bracket:	PEB2
---	------

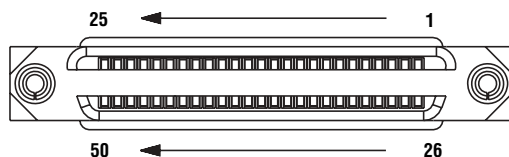
Write-on label kit for panel identification:	DPLT
---	------

Write-on label kit for port identification:	DPLF
--	------

Adapter Wiring

50-Pin Female Connector Pin Number							
Port Number				Connected to Modular Connector Pin #1	Connected to Modular Connector Pin #2	Connected to Modular Connector Pin #3	Connected to Modular Connector Pin #6
1	13	25	37	26	1	27	2
2	14	26	38	28	3	29	4
3	15	27	39	30	5	31	6
4	16	28	40	32	7	33	8
5	17	29	41	34	9	35	10
6	18	30	42	36	11	37	12
7	19	31	43	38	13	39	14
8	20	32	44	40	15	41	16
9	21	33	45	42	17	43	18
10	22	34	46	44	19	45	20
11	23	35	47	46	21	47	22
12	24	36	48	48	23	49	24

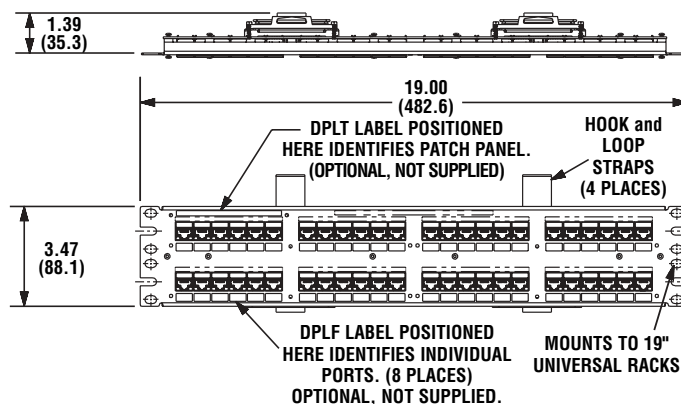
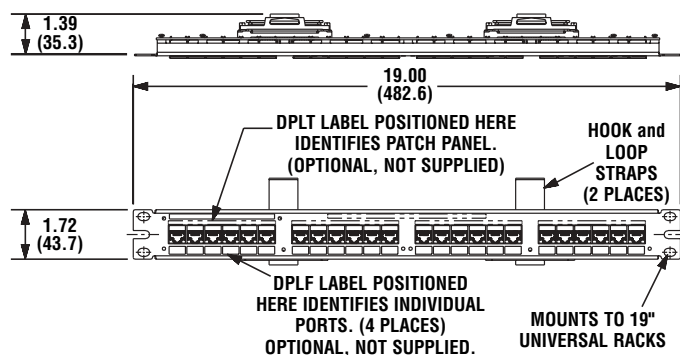
50-Pin Female Connector



DATA-PATCH™ 10/100BASE-T Patch Panels

24-Port

48-Port



Dimensions are in inches (Dimensions in parenthesis are metric)

WORLDWIDE SUBSIDIARIES AND SALES OFFICES

PANDUIT CANADA
Markham, Ontario
cs-cdn@panduit.com
Phone: 800.777.3300

PANDUIT EUROPE LTD.
London, UK
cs-emea@panduit.com
Phone: 44.20.8601.7200

PANDUIT SINGAPORE PTE. LTD.
Republic of Singapore
cs-ap@panduit.com
Phone: 65.6305.7575

PANDUIT JAPAN
Tokyo, Japan
cs-japan@panduit.com
Phone: 81.3.3767.7011

PANDUIT LATIN AMERICA
Jalisco, Mexico
cs-la@panduit.com
Phone: 52.333.777.6000

PANDUIT AUSTRALIA PTY. LTD.
Victoria, Australia
cs-aus@panduit.com
Phone: 61.3.9794.9020

For a copy of PANDUIT product warranties, log on to www.panduit.com/warranty



For more information
Visit us at www.panduit.com
Contact Customer Service by email: cs@panduit.com
or by phone: 800-777-3300 and reference COSP33

©2007 PANDUIT Corp.
ALL RIGHTS RESERVED.
Printed in U.S.A.
WW-COSP33
9/2007
Replaces WW-COSP10