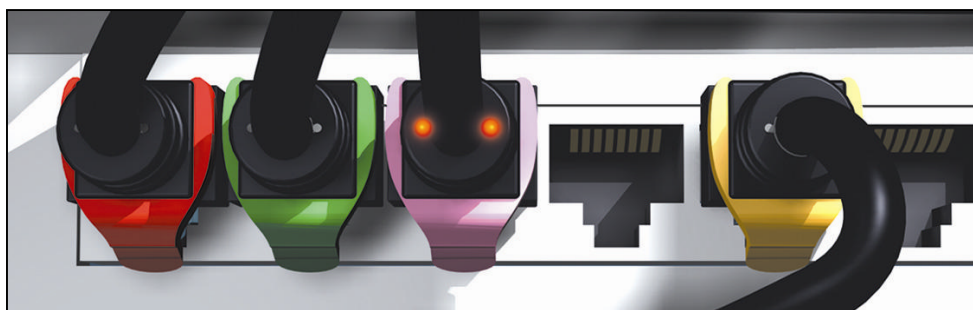


# PCI Patch – 10Gigabit/s " Cat 6A " FTP RJ45 patch cords **Technical Data Sheet**

**Patent Pending**



## **Cat 6a RJ 45 Patch Cords:**

PatchSee RJ 45 Patch Cords are designed, and individual tested for connecting the network equipment to patch panel and network user outlet. They are warranted for cat 6A TIA/EIA-568-B-2.10 Channel test on a Permanent Link certified for transmission frequencies of up to 500 MHz and compatible with the 10 Gigabits applications. And Standard compliance with ISO/IEC 11801 ed 2002-Amd1 & Amd2.

## **PatchSee Concept and main characteristics**

- Light identification by plastic optical fiber,
- PCI (Patchsee Connector Insert : Owner PatchSee)
  - o designed to improve NEXT and RL for 10 Gigabits applications,
  - o designed for high density panels and active components (same size as the plug in width and height)
- Warranty 25 years for Channel Cat 6A link on Cat 6A Permanent Link certified and ready for 10 Gigabits applications
- Individual tested: each Patch Cord is individual tested (Return Loss, Attenuation, NEXT, etc...) and all the reports tests are archiving on computer database.
- Many lengths 2 feet (0.6 m) up to 20 feet (4.9 m) for patch panel and terminal link,
- Color cable: Black with white marking,
- Color boot: Grey with white marking,
- Movable color clip, 16 colors available,
- Packaging: boxes of 6 or 12 pieces, depending of the length,
- Available in cross patch cord,
- Marking on the boot: length and P/N,

- Unique serial number marking on the cable,

## Technical Data Sheet

### Construction

<b>Number of pairs</b>	4
<b>Type</b>	U-FTP (STP)
<b>Conductor</b>	Stranded bare copper wire, 7/0.16 +/- 0.005 mm
<b>Gage</b>	26 AWG
<b>Insulation</b>	Foam Skin Polyethylene
<b>Individual pair screen</b>	Al-laminated metal pair foil
<b>Pair Screen</b>	n a
<b>Optical wave guide</b>	2 POF 0.5 mm
<b>Drain</b>	Stranded drain wire tinned copper, 26 AWG
<b>Jacket</b>	LSOH Black with white printing (LSOH : IEEC 60332-3 Cat C, Low Smoke : IEEC 61189-2C12, Halogen Free : IPC4101-A)
<b>Overall diameter</b>	5.9 +/- 0.2 mm
<b>Plug housing</b>	UL 1863 Polycarbonate , individual wire guide and management bar
<b>Contacts</b>	Moved contacts
<b>Contact Plating</b>	50 µ inches gold minimum (1.2 µm)
<b>Shielding</b>	Tin-plated

### Mechanical Properties of the cable

<b>Fire Propagation Test</b>	<b>Temperature range During operation</b>	<b>Fire load</b>	<b>Bending radius</b>
UL 1581 VW 1 Flame test	-20°C up to +75°C	372 MJ/km	>25 mm without load

### Electrical Properties of the cable (at 20°C +/- 5°C)

<b>Conductor resistance</b>	<b>Insulation resistance</b>	<b>Mutual Capacitance</b>	<b>Impedance 1-100MHz</b>	<b>Impedance 100-250MHz</b>	<b>Propagation delay</b>	<b>Test voltage</b>
< 140? /km	> 150 M? /km	56nF/km	100 +/- 15 ?	100 +/- 15 ?	< 45 ns/100m	2 500 V - 3 seconds