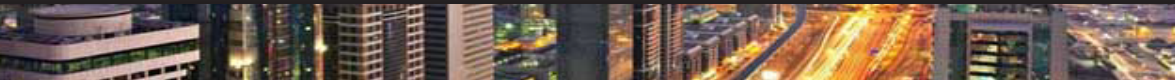




# INTELLIGENT PERFORMANCE FOR LARGE VENUES



## Nomadix AG5600 Access Gateway

The AG5600 is a high performance network appliance enabled with GigE throughput capability for deployment in large venues including hotels, airports, convention centers and municipal Hotzones.

Built upon the proven Nomadix Service Engine (NSE) Core Software, the AG5600 is a high end access gateway offering a full suite of intelligent and secure solutions for businesses needing to support thousands of simultaneous users.



## SCALABILITY WITH GigE PERFORMANCE

As a high performance access gateway, the AG5600 comes with GigE throughput, advanced bandwidth management capability and offers a Metro Expansion Bundle which will allow the gateway to support up to 4,000 simultaneous users. The AG5600 is also a platform of choice for many third party application developers, your investment in the access gateway is future proofed.

- Metro Expansion Bundle
- Hospitality Module
- GigE throughput

## INTELLIGENT ROAMING INNOVATION

With Nomadix intelligent Zone Migration, users no longer have to go through repetitive re-authentication process while roaming between hotspot zones within a network. On top of that, the AG5600 provides the added advantage for users to maintain one billing account with their service provider while roaming between networks.

- Zone Migration
- Realm Based Routing



## AG560 – INTELLIGENT PERFORMANCE FOR LARGE VENUES

### ADVANCED SECURITY FOR NETWORK PROTECTION

Supporting universally accepted security standards, the AG560 protects businesses with multiple user authentication models and blocks unauthorized network access with ICMP packet blocking. Security is enhanced by utilizing Session Rate Limiting (SRL) to manage Denial of Service (DoS) attacks. In addition, the AG560 supports Nomadix patented iNAT™ technology that allows multiple VPN tunnels to provide all users with seamless connection at higher levels of security.

### PROVEN RELIABILITY FOR PEACE OF MIND TO MANAGE YOUR CORE BUSINESS

The AG560 is a dedicated network appliance, inherently designed to be more reliable as compared to server based gateways. The AG560 can also be deployed in a High Availability configuration to offer enhanced network uptime and service availability by providing failover functionality. Nomadix is recognized as the pioneer of access gateway technology, shipping units to customers all over the world for more than a decade. Nomadix Service Engine™ Core Software gateways have proven over time to function robustly and dependably.

- iNAT™ enabled
  - SRL to mitigate DoS
  - Support for IPSec
  - URL filtering
  - ICMP blocking
- 
- High availability module
  - Centralized Radius Authentication
  - Integrated VPN Client for Management

#### Market Segments

- Airports
- City Hotspots
- Hotels
- Universities
- Convention Centers
- Stadiums
- Conferences
- Cruise Ships



# Product Overview

## Available Modules

### Hospitality Module

- Property Management Interface

### High-Availability Module

- Fail-Over

NSE Core Software is licensed annually.  
For more information on the NSE core and available Modules, visit [www.nomadix.com](http://www.nomadix.com).



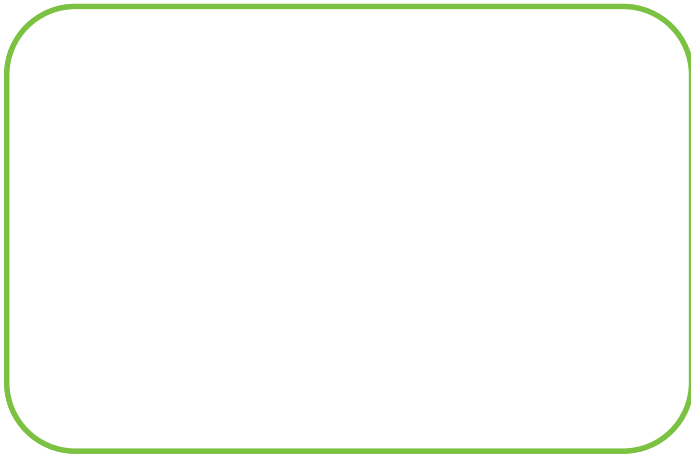
## SPECIFICATIONS

Model	AG 5600		
<b>User True Plug and Play</b>	• Dynamic Address Translation™ (DAT)	• Dynamic Transparent Proxy	
<b>Service Provisioning</b>	• Home Page Redirect • Portal Page Redirect • Session Termination Redirect • Information and Control Console	• Pop-Up (Explicit) Logout Button • International Language Support • External Web Server Mode • Internal Web Server Mode	• Secure XML API over SSL • Login Page Failover
<b>Billing Plan Enablement</b>	• RADIUS Client • RADIUS (AAA) Proxy • Port Based Policies	• Port Mapping • Local Database • Credit Card Interface	• Bill Mirroring
<b>Access Control and Authentication</b>	• Authorization, Authentication and Accounting (AAA) • Walled Garden • Enhanced Group Accounts	• Tri Mode Authentication • Universal Access Method over SSL • IEEE 802.1x • Smart Client Support (Boingo, iPass)	• Mac Authentication • Remember Me Log-In
<b>Advanced Security</b>	• iNAT™ • IPSec Support • PPTP Support	• Session Rate Limiting (SRL) • User Agent Filtering • Mac Address Filtering	• URL Filtering • ICMP Blocking • Proxy ARP
<b>Policy Based Traffic Shaping</b>	• Bandwidth Management	• QoS Tagging	
<b>IP Address Management</b>	• IEEE 802.3/ 3u/ 3ab • IEEE 802.1d • DHCP Server	• DHCP Relay • Multiple Subnet Support • IP Upsell	• DHCP Client • PPPoE Client
<b>Intelligent Roaming</b>	• Realm Based Routing	• Zone Migration	
<b>Network Management</b>	• Web Management Interface (WMI) • Command Line Interface (CLI) • Integrated VPN Client for Management • RADIUS-Driven Configuration	• Multi-level Admin Support • Centralized Radius Authentication • SMTP Redirection • Access Control	• Bridge Mode • SNMPv2c • Syslog/AAA Log
<b>Media Access Control</b>	• CSMA/CA		
<b>Ports</b>	• 10/100/1000 Base-T Ethernet, RJ-45 (UTP): WAN • 2 - 10/100/1000 Base-T Ethernet, RJ-45 (UTP): LAN	• Front access RJ-45 for System Console • DB9 serial: Property Management Interface/ AUX	
<b>Power</b>	• 100 to 240 VAC	• 50/60 Hz	
<b>Environment</b>	• Operating temp: 0~40c • Operating humidity: 20~90% RH	• Storage: -10 ~70c • Storage humidity: 5~95% RH	
<b>Regulatory</b>	• FCC Class A • UL, UL (US and Canada) • CE: • EN 55022: 2006 + A1: 2007 • EN 55024: 1998 + A1: 2001 + A2: 2003 - IEC 61000-4-2: 1995 +A1: 1998 + A2: 2000	- IEC 61000-4-3: 2006 - IEC 61000-4-4: 2004 - IEC 61000-4-5: 2005 - IEC 61000-4-6: 2007 - IEC 61000-4-8: 1993 : A1: 2000 - IEC 61000-4-11: 2004	• EN 61000-3-3: 1995 +A1: 2001 +A2: 2005 • Low Voltage Directive • European Council Directive 2006/95/EC • IEC 60950-1: 2005 (2nd Edition) • EN60950-1:2006 + A11: 2009
<b>Physical</b>	• 1U rack mountable • 438mm wide x 292.0mm deep x 44mm high	• 17.24" x 11.53" x 1.73" • Weight: 8.8 lbs.	• Weight: 4.00 Kg
<b>LEDs</b>	• Power Indicator	• 10/100/1000 ACT/LINK for each Ethernet port	
<b>Performance</b>	• User Support: Up to 2,000 concurrent users, 4,000 concurrent on Metro Bundle	• Throughput: Up to 750Mbit/s*	

\*As defined by RFC1242, Section 3.17

Nomadix Service Engine, Dynamic Address Translation and iNAT are trademarks or registered trademarks of Nomadix, Inc. Other names and brands may be claimed as the property of others.

## Nomadix Authorized Value Added Reseller



Nomadix Pte Ltd

Address: 30851 Agoura Road, Suite 102  
Agoura Hills, CA 91301, USA

Contact: +1.818.597.1500

Email: [sales@nomadix.com](mailto:sales@nomadix.com)

[www.nomadix.com](http://www.nomadix.com)

Leader in enabling intelligent public access since 1998.  
Nomadix. Fundamental to your network

